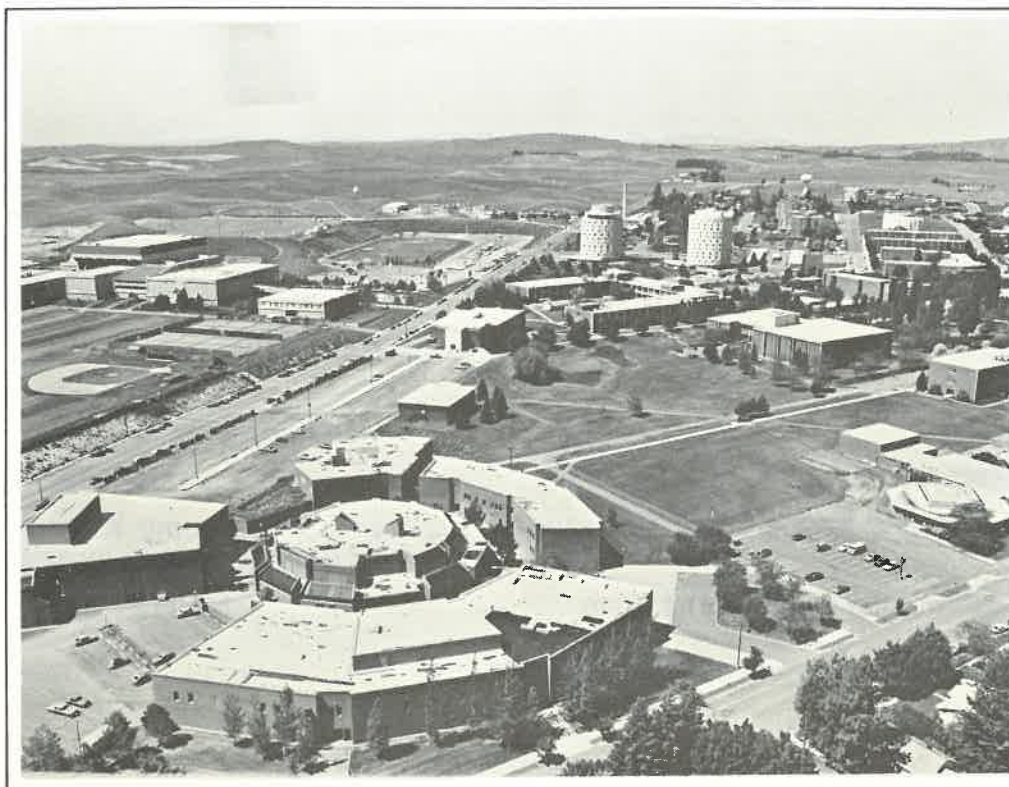




Eastern Washington University **BAND TOUR '85**



About Eastern Washington University

Eastern is located in the city of Cheney, population 7,500, just 20 minutes from Spokane, a metropolitan area of more than 300,000 people. The region is blessed with an invigorating moderate climate with four distinct seasons.

Eastern's campus comprises some 335 acres and 51 buildings, which includes five residence halls housing up to 2,000 on-campus students, and some of the finest indoor physical education facilities in the United States. The beauty of Eastern's campus and its quiet surroundings offer an ideal setting for the pursuit of knowledge. Expanses of lawns and gardens are shaded by magnificent trees—many of which are well over one hundred years old.

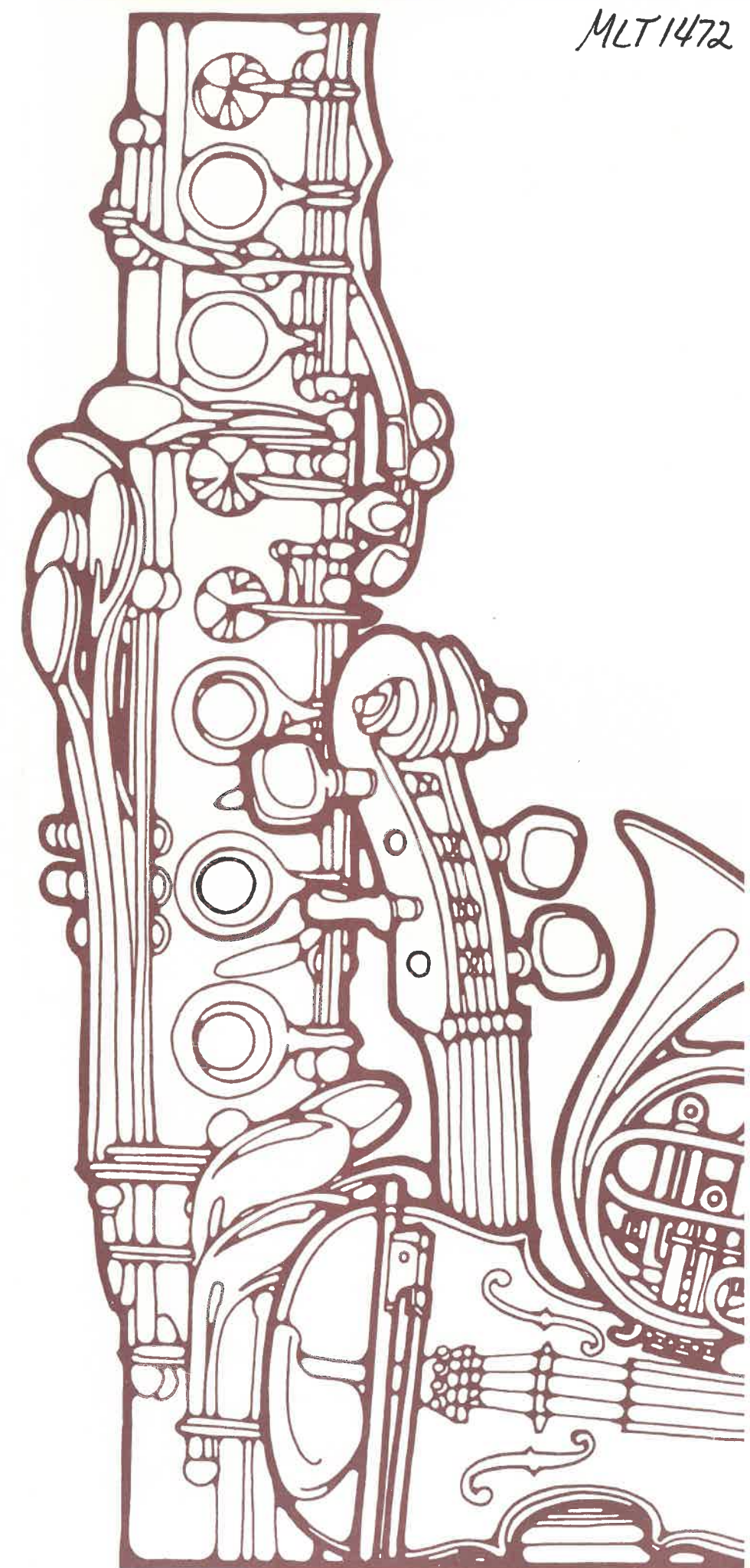
The university student body includes nearly 9,000 students, with more than 400 international students from six continents. The University offers more than 100 different majors and interdisciplinary programs, and has 17 master's degree programs, including new programs in Public Administration, Urban and Regional Planning and Fine Arts. The master's program in Business Administration has been accredited by the American Assembly of Collegiate Schools of Business. EWU also offers several new interdisciplinary degrees through the Institute of Technological Studies to better serve the "high tech" needs of the Pacific Northwest.

EWU's Spokane Center in downtown Spokane provides a full range of services to traditional students as well as adult learners. The Center offers daytime and evening courses in the MBA, MPA, MEd, and other graduate and undergraduate programs.

Organized into eight school and colleges, Eastern's 380 faculty members include professors with national and international reputations as scholars, scientists, artists, writers and teachers. Nearly 70 percent of the faculty hold doctoral degrees.

Classes at Eastern are generally small—25 to 40 students. Most classes are small enough for your professors to know and help you personally. Our student-teacher ratio is a very attractive 21:1.

MLT1472



**Gavin Rhodes Lewis
Director of Bands**

Mr. Lewis joined the EWU faculty this fall as the new director of University Bands. He conducts the University Symphony Band, Wind Ensemble, Eagle Marching Band and Jazz Ensembles as well as teaching classes in conducting, band literature and marching band techniques. He received his bachelor of Music Education degree from the University of Wisconsin-Eau Claire in 1969 and his master of arts degree in Performance from the University of Iowa in 1975. He is presently completing his doctor of Musical Arts degree in Conducting at the University of Iowa. Mr. Lewis comes to Eastern with 15 years of public school and college teaching experience. An accomplished trumpet player, Mr. Lewis has studied with such noted teachers as Charles Schleutter, Fred Sauter and Dominic Spera. He has served as principal trumpet and soloist with the University of Wisconsin-Eau Claire Symphony Band, Jazz Ensemble and Orchestra, the Salem Symphony Orchestra, the Saint Cloud Civic Orchestra, and has appeared with the Saint Paul Chamber Orchestra. Mr. Lewis continues to be active as a guest soloist, conductor, adjudicator and clinician.

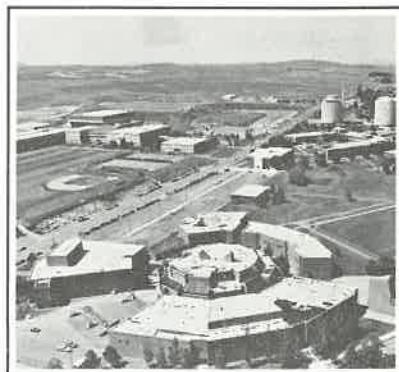


**Virginia Jones
Clarinetist**

Mrs. Jones graduated from the University of Northern Colorado where she studied with Dr. William Gower. While working towards a masters degree at the University of Iowa, she studied with Himie Voxman and Thomas Ayers. Currently in her 17th season as principal clarinetist with the Spokane Symphony and the Washington Chamber Orchestra, she regularly performs with the Spokane Jazz Society Orchestra, Connoisseur Concerts Octet and Viennese Orchestra, Spokane Concert Band, Eastern Washington University Faculty Quintet and the Wendin Trio. She was formerly principal clarinetist with the Tucson Symphony and has performed with the Flagstaff Festival Orchestra, the Royal Winnipeg Ballet, Joffrey Ballet and numerous other touring groups.

Fine Arts Complex

Constructed in 1970, the Fine Arts Complex at Eastern Washington University provides the finest in accommodations for the Departments of Art, Theatre, Speech, Radio-Television and Music. Of particular note, the Department of Radio-Television enjoys one of the finest recording facilities in the country and attracts students from all over. The Department of Music boasts a superb building facility that includes a 300-seat recital hall, 30 practice rooms, 18 faculty studios, four classrooms, two rehearsal halls, a complete electronic piano lab, an electronic music lab and a music library with fully implemented listening facilities and one of the largest collections of musical scores and recordings in the state of Washington.



1985 Winter Band Tour

Monday, March 4
Eastmont H.S.
Wenatchee H.S.

Tuesday, March 5
Mercer Island H.S.
Issaquah H.S.

Wednesday, March 6
Renton H.S.
Hazen H.S.
Lindbergh H.S.

Thursday, March 7
EWU Home Concert
8 p.m. MBRH

Concert Repertoire

(Program to be selected from the following works)

Symphonic Wind Ensemble

- March Op. 99Sergei Prokofieff
arranged for band by Paul Yoder
- AscendancyLadd McIntosh
- Polka and Fugue from "Schwanda".....Jaromir Weinberger
transcribed for band by Glenn Cliff Bainum
- Variants on a Mediaeval TuneNorman Dello Joio

University Symphony Band

- Vanity Fair OverturePercy E. Fletcher
- Recitative and PolaccaCarl Maria von Weber
Clarinet Soloist- Virginia Jones arranged for band by T. Conway Brown
- A Tribute to Stephen Fosterarranged by Sammy Nestico
- Othello- A Symphonic PortraitAlfred Reed
 - I. Prelude (Venice)
 - II. Aubade (Cyprus)
 - III. Othello and Desdemona
 - IV. Entrance of the Court
 - V. The Death of Desdemona, Epilogue
- Viva Musica!Alfred Reed
- Nobles of the Mystic ShrineJohn Philip Sousa

The Department of Music

The Department of Music offers one of the finest study plans in Washington with fully accredited programs leading to bachelor's and master's degrees in Music Education, Performance, Music History, Music Merchandising, Theory and Composition. To supplement the balanced curriculum of applied music, theory, history and education, the department offers a wide range of performing ensembles which include:

- | | | |
|--------------------------|----------------------|----------------------|
| University Symphony Band | Jazz Combo | Collegians |
| Symphonic Wind Ensemble | Trombone Choir | 3 O'Clock Vocal Jazz |
| Eagle Marching Band | University Orchestra | Music Theatre |
| Jazz Ensembles I & II | Chamber Ensembls | Opera Workshop |
| Percussion Ensemble | Symphonic Choir | |

These groups are open to both music majors and non-majors. The various performing ensembles are comprised of students representing almost every academic area on campus. With a faculty of 20 full-time professors and four graduate assistants, over 100 music majors and minors are provided the opportunity to specialize in nearly every area of music. Faculty members of the Department of Music are active clinicians, guest lecturers, adjudicators and guest soloists. A number of the faculty are also principal musicians in the Spokane Symphony Orchestra.

University Symphony Band/Wind Ensemble

Piccolo
Heather Barnhart, *E. Wenatchee* +

Flute
* Denise Terry, *Wenatchee* +
Kim Blakeney, *Wenatchee* +
Karen Riseland, *Bellingham*
Tyree Bennett, *Richland*
Lorie Mancinelli, *Yakima*
Charles Hutchinson, *Spokane*
Marybeth Prine, *Walla Walla*
Stacey Leibrecht, *Enterprise, AL*

Oboe
* Andrew Turtle, *Spokane* +
Paul Plowman, *Spokane* +

Bassoon
* Doug Huggins, *Spokane* +
Marc Porlier, *Port Angeles* +

Eb Clarinet
Karl Mote, *Spokane* +

Bb Clarinet
* Peter Albert, *Cheney* +
Julie Jones, *E. Wenatchee* +
Shelly O'Laughlin, *Walla Walla* +
Amy Myles, *Ephrata* +
Maureen McKanna, *Spokane* +
Christine Salvador, *Cheney* +
Stephanie Steadman, *Deer Park*
Karl Mote, *Spokane* +

Alto Clarinet
Christine Winters, *Cheney* +

Bass Clarinet
* Lisa Pirkkala, *Medical Lake* +
Christine Winters, *Cheney*

Contrabass Clarinet
David Birks, *Edmonds* +

Alto Saxophone
* Richard Burrows, *Coeur d'Alene, ID* +
James Garris, *Spokane* +
Tina Powers, *Deer Park* +
Eva Lansberry, *Spokane*

Tenor Saxophone
Steve Carder, *Kennewick* +
Lolo Arevalo, *Grandview*

* Denotes section leader + Denotes Wind Ensemble

EWU Jazz Ensemble

Reeds
Paul Plowman, *Spokane*
Richard Burrows, *Coeur d'Alene*
David Birks, *Edmonds*
James Garris, *Spokane*
Peter Albert, *Cheney*

Trumpet
James Brooks, *Spokane*
Gail Phillips, *Spokane*
Terrance Jones, *Helena, MT*
James Meredith, *Seattle*

Baritone Saxophone
Arlene Mitchell, *Spokane*

Cornet/Trumpet
* Gail Phillips, *Spokane* +
Mike Jydstrup, *Spokane* +
Terrance Jones, *Helena, MT* +
Rick Paulson, *Vancouver, WA* +
Ted Welsh, *E. Wenatchee* +
James Meredith, *Seattle* +
Andrew Curry, *White Salmon*
Jerry Thornton, *Cheney*

Horn
* Kimberly Johnson, *Issaquah* +
Joan Johnston, *Cheney* +
Cheri Taft, *Burbank, WA* +
Athena Hill, *Richland* +

Trombone
* Richard Speegle, *Vancouver, WA* +
Phil Whisman, *Spokane* +
Cindy Hansen, *Auburn* +
Gary Peters, *Toppenish*
Edgar Lincoln, *Burlington*
Gerald Larkins, *Seattle* +

Baritone
* Patrick Albert, *Cheney* +
James Ward, *Leavenworth* +
Alan Reid, *Spokane*

Tuba
* Brian Seagrave, *Medical Lake* +
Mark Alexander, *Spokane* +

String Bass
Christopher Prideaux, *Spokane* +

Percussion
* Kristi Newsum, *Cheney* +
Dale Norby, *Walla Walla* +
Alana Smith, *Coeur d'Alene, ID* +
Richard Jones, *Chattaroy* +
Charles Casey, *Tumwater* +
Marybeth Prine, *Walla Walla* +
Scott Ketron, *Helena, MT* +

Trombone
Richard Speegle, *Vancouver, WA*
Phil Whisman, *Spokane*
Edgar Lincoln, *Burlington*
Bob Brownlee, *Spokane*

Rhythm
Patrick Albert, *Cheney*
Christopher Prideaux, *Spokane*
Scott Ketron, *Helena, MT*

Horn
Kimberly Johnson, *Issaquah*

The EWU Band Program

The EWU Band Program serves to develop future musician-educators for careers in music while also offering all students the opportunity to continue their musical experiences in an instrumental organization. Some of the yearly activities include state-wide tours, quarterly concerts and special concerts which feature such guest artist/composers as Alfred Reed, Bill Watrous and Louis Bellson. This year the EWU Bands will hold their first annual Eastern Honors Band Festival and Directors Clinic which will provide over 100 selected high school musicians with master classes, clinics, concerts, social activities and an opportunity to perform under the baton of guest composer-conductor Alfred Reed.

During the fall season, the Eagle Marching Band appears for home football games, makes several off-campus appearances (including performances at the Kingdome) and hosts the EWU Homecoming Band Day festivities for guest high school and college marching bands.

Performance in the EWU Band Program affords the student a well balanced experience in musical excellence through exposure to the finest in wind literature. This experience is offered to all EWU students whether majoring in music or in other academic areas.

PROGRAM NOTES

MARCH, Opus 99, composed in 1943, received its premier performance on a broadcast conducted by Major Petrov, the leading bandmaster of the Soviet Union. This work was premiered in this country under the baton of Serge Koussevitzky, conducting the Combat Infantry Band, on May 31st, 1945. The March is the second of Prokofiev's original works for band. His first march entitled, Athletic Festival March, Opus 79, was first performed in America by the famed Goldman Band.

ASCENDANCY comprises a great many twentieth century compositional devices, not the least of which are multimeters, polyrhythms and tonalties, and an obvious dip into the jazz idiom. Composed in 1973, the work manages to explore the various effects characteristic of the instruments in the ensemble such as glissing Trombones, flutter tonguing trumpets, muted french horns and trilling woodwinds. The result is a fresh and exciting composition of today's sounds.

POLKA & FUGUE from "Schwanda". The opera, Schwanda the Bagpiper, premiered in Prague in 1927 and became internationally famous. The Polka and Fugue, taken from the opera for use as a concert piece, has become even more successful. Based on a Czech folk tale, the story involves Schwanda, the master bagpiper, and Babinsky, a robber who leads Schwanda on a series of adventures. The polka is taken from a scene in which Schwanda plays for Queen Iceheart who is waiting for someone who can melt her heart. His irresistible playing does the trick, and the queen and Schwanda decide to get married - sealing their vow with a kiss. However, Schwanda is already married so the marriage to the queen is called off. In response to his wife's questions of his fidelity he cries, "If I have given the queen a single kiss, may the Devil take me" - and the Devil does. He is rescued from hell, however, by Babinsky, who plays cards with the Devil and wins everything he owns. He returns it all in exchange for Schwanda who plays the fugue on his bagpipe before he leaves, so that the servants of hell may hear the playing of a master bagpiper.

VARIANTS ON A MEDIAEVAL TUNE was commissioned by the Mary Duke Biddle Foundation for the Duke University Band, and was first performed by that band in April, 1963 under the baton of its conductor, Paul Bryan. The theme, "In dulci júbilo," has been used by many composers, among them J.S. Bach, as the subject for a variety of musical works. After a brief introduction, the theme is clearly stated by several solo woodwind instruments. It then goes through five metamorphoses or "variants," strongly contrasting in tempo and character, and utilizing the possibilities of the band fully.

-INTERMISSION-

VANITY FAIR OVERTURE represents a musical portrayal of several characters from William Thackeray's novel, "Vanity Fair." Considered to be one of the great novelists of the Victorian Age,

Thackeray wrote in a colorful, lively style, with a simple vocabulary and clearly structured sentences. "Vanity Fair, one of the finest and best known novels in English Literature, is Thackeray's attempt at an honest view of life. First published in monthly parts, the novel traces the fortunes of upper-middle-class Londoners of the early 1800's. Thackeray called "Vanity Fair" a novel without a hero," in keeping with his belief that most people are a mixture of the heroic and the ridiculous. He knew that men and women are complex and he avoided oversimplifying them. He wrote with affection about kind and gentle Amelia Sedley. But he also called Amelia "a silly little thing." Becky Sharp, more nearly the "heroine" is selfish, cunning and cynical. Becky is never bitter, however, and readers enjoy seeing her good naturedly defeat people even less admirable than herself. Fletcher's overture reflects upon these characters.

RECITATIVE & POLACCA Founder of the German Romantic Opera, Carl Maria von Weber also takes high rank as a composer of concertos. When Mozart introduced the clarinet into the higher levels of music it rapidly became a favorite solo instrument. Weber was a great friend and admirer of Heinrich Baerman, the leading clarinetist of his day, and for Baerman, Weber wrote, among other works for clarinet, the Second Grand Concerto in E-Flat. Virginia Jones, Adjunct Assistant Professor of Clarinet at Eastern, performs the RECITATIVE and POLACCA from this great concerto.

OTHELLO - A SYMPHONIC PORTRAIT The works of William Shakespeare, having observed their 400th anniversary, undoubtedly have inspired more musical compositions than those of any other writer in the English language. Incidental music for the plays on stage, in film, and on television, as well as concert works for a variety of media, appear every year. Alfred Reed's first version of OTHELLO was as incidental music for a production by the University of Miami's Ring Theatre and was scored for sixteen brasses and three percussion. The present score utilizes some portions of this music in a completely re-composed setting and is the fourth in the series of commissions extended by Ithaca College in memory of Walter Beeler. Each movement of this concert suite musically characterizes the mood generated by a scene from the play. On Sunday afternoon at 2:00 p.m., March 17, this work will again be performed at the final concert of the Eastern Honors Band Festival with Dr. Alfred Reed conducting.

NOBLES OF THE MYSTIC SHRINE As might be expected of a person in his position, John Philip Sousa belonged to a large number of organizations; almost forty in all. When he became a member of the Ancient Arabic Order of the Mystic Shrine in 1922, he was promptly named the first honorary director of the Almas Temple Shrine Band in Washington. In 1923 the Almas Temple hosted the national convention and Sousa conducted a band of 6,200 Shriners in Griffith Stadium; the largest band he ever conducted. In subsequent tours with his band, many of Sousa's appearances were arranged by the Shriners, and occasionally the host band joined in the playing of "their" march, NOBLES OF THE MYSTIC SHRINE.