

4-15-2015

Easterner, Vol. 66, No. 23, April 15, 2015

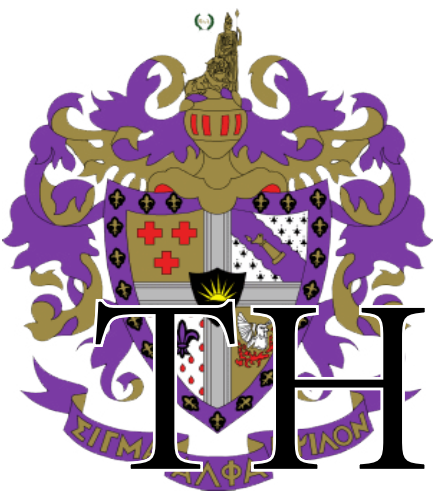
Associated Students of Eastern Washington University

Follow this and additional works at: https://dc.ewu.edu/student_newspapers

Recommended Citation

Associated Students of Eastern Washington University, "Easterner, Vol. 66, No. 23, April 15, 2015" (2015). *Student Newspapers*. 886.
https://dc.ewu.edu/student_newspapers/886

This Book is brought to you for free and open access by the Eastern Washington University Digital History Collections at EWU Digital Commons. It has been accepted for inclusion in Student Newspapers by an authorized administrator of EWU Digital Commons. For more information, please contact jotto@ewu.edu.



Column: SAE fraternity incident calls for refocus on Greek values, **page 3**

Eagle Life: Get Lit! fosters literary growth at EWU, **page 5**

THE EASTERNER

EASTERNERONLINE.COM

EST. 1916

Eastern Washington University's student-run newspaper

APRIL 15, 2015

VOLUME 66, ISSUE 23

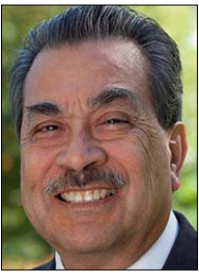
Former EWU president and wife to be honored at Cheney campus mall

Eastern dedicates campus mall to former university president Rodolfo Arévalo, wife to evoke lasting unity

By **KATIE DUNN**
staff writer

Former EWU President Rodolfo Arévalo and his wife Nadine Arévalo are returning to Eastern on April 23, where a ceremony will be held to dedicate the campus mall in their name.

Rodolfo Arévalo began working at Eastern in 2006 and retired at the end of the 2013-2014 academic year, according to The Spokesman-Review.



Arévalo

The board of trustees made the decision to recognize the Arévalos for their positive influence on the campus and the community and to recognize Rodolfo Arévalo as the first Latino president of a four-year university in the Washington state's history, according to Michael Westfall, vice president of university advancement, who is running public relations for the event.



Arévalo

"I thought it was particularly nice that they included Nadine [Arévalo] in that because she obviously brought a tremendous amount of energy and enthusiasm and contributed to the community," said Westfall.

According to past Eastern press releases, Nadine Arévalo helped start the annual food drive at EWU in 2008 and continued an active role in the event until 2013.

Westfall said the board of trustees chose the campus mall because they were looking for a cost-effective way to recognize the Arévalos in a public area, and the camps mall matched both qualifications.

Westfall said he had a minor role in the design of the stone plaque, which is the only change they are making to the mall.

The plaque has the Arévalos names etched into the stone along with inspiring words honoring

CAMPUS MALL-PAGE 2

Track and Field set records



Photo by Anna Mills

Brandon Jimerson of EWU Jumps competes at the Big Sky Conference Championships at the 44th Pelluer Invitational on April 11.

By **BRANDON CLINE**
staff reporter

The 25-mile-per-hour wind at the 44th Pelluer Invitational on April 11 did not hold back the EWU track and field team, as a plethora of athletes set personal records, school records and qualifying marks for the Big Sky Conference Championships, which will be held later this season at EWU.

Playing host to the University of Montana and the University of Idaho, both the men's and women's teams went 2-0 against the conference foes. The men's team defeated Montana, 102-49, and Idaho, 102-20, while the women edged out Montana 73.5-63 and took down Idaho 73.5-39.5.

It was a banner day in the discus for the women, as two qualifying marks were set and the previous school record in the event was broken twice. Freshman D'onna Robinson and junior Morgan Romey set qualifying marks with throws of 151-7 and 148-10,

"It goes to show that with a good attitude, persistence, and good leadership, those elements didn't distract our athletes from what they came to do today and they were rewarded with great performances."

Coach Stan Kerr
EWU Men's head coach

respectively. Senior Emma Murillo set a personal and school record with a throw of 169-0, while sophomore Kelsie Forcier's throw of 160-5 was a personal best that now ranks second all-time in school history.

"Discus was awesome, it was a great event for Eastern today. We had four different athletes come away with personal bests

and qualify for conference," said women's head coach Marcia Mecklenburg. "I am so excited for Emma and her nine-foot personal best. That's huge, I love doing that on the home ring."

Freshman Dominique Butler was the other Eagle to set a qualifying mark, with a jump of 38-5 1/2 in the triple jump, finishing second behind teammate Morena Mannucci. Butler is the 14th woman to qualify for the conference championships and brings the total to 21 EWU athletes meeting 28 qualifying marks.

The men dominated the rest of the field, as senior Phil Puccino posted wins and personal records in both the high jump and long jump, while Cody Humphrey did the same in the shot put and the discus.

"Phil has put in a lot of years here, working hard and dealing with injuries, and now he has put himself in a position to have the

TRACK AND FIELD-PAGE 12

New art project taking over first floor of Brewster Hall

By **CLAIRE SIMPSON & ARIEL KIMBLETON**
for the easterner

Brewster Hall's communal space on the first floor has been hidden behind a large plastic tarp as construction crews convert the area into an art gallery sponsored by EWU Student Affairs.

The EWU Downtown Student Gallery, as it is tentatively named, will open its doors on April 30 and serve as a space for faculty, guest artists and students to showcase their artwork in a location closer to downtown Cheney.

"I think, hopefully, if it flies in the tradition

of a real art gallery, we'll have a culmination of things," said Beth Baker, executive assistant to the vice president of EWU Student Affairs. "It would be great to get student artwork there, maybe even alumni ... because we want it to be a creative space."

Baker said Brewster Hall was chosen for its proximity to the downtown area and the room's potential.

"It was a vacant space, it's a beautiful space," she said. "It's large, lots of walls. An art gallery is based on linear feet, it's not based on square feet. So that's how many pictures can hang

along the wall. And it's close to downtown, right in the [residential] hall."

The former event space has been undergoing renovations to prepare for public opening. Art department chair Greg duMonthier said he was consulted on the proper construction of a gallery space.

According to Baker, projects included removing shelving brackets from the walls, pulling up the carpet and applying a fresh coat of paint.

BREWSTER-PAGE 8



Photo by Laura Lango

Brewster Hall, located in Cheney on Second St., is a residence hall at EWU.

INSIDE:

NEWS PAGE 2 • EAGLE LIFE PAGE 4 • COMMUNITY PAGE 7 • OPINION PAGE 9 • SPORTS PAGE 11

Upcoming Events:

April

April 15: **LGBT Writers: Their Lives, Their Works:** LaVona Reeves, an English professor, will talk about several LGBT authors featured in her new course, 'LGBT Writers: Their Lives and Their Works.' The lecture starts at 12 p.m. in 207 Monroe Hall. Sponsored by EWU Women's and Gender Studies.

April 15: **The Roots of Music: Explore Earth's Soundscapes with George Halekas** will be presented at 12 p.m. in Showalter 109. Sponsored by the EWU Honors Program, biologist George Halekas will elaborate on nature, the human spirit, music and how it all weaves together within ecology.

April 16-18: **National Conference on Undergraduate Research (NCUR)** will be in the URC starting at noon.

April 19: **Film Screening: The Hunting Ground.** For \$8, students can attend the Magic Lantern in downtown Spokane for a viewing of the controversial documentary surrounding rape on college campuses. A post-film discussion with panelists will occur afterward.

April 23: **Jared Diamond** will be on the Cheney campus to deliver a lecture on his book, "Collapse" at 1 p.m. in Showalter Auditorium. The event is

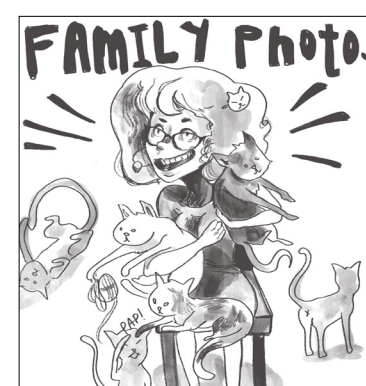


Illustration by Lauren Campbell

OP-ED: 'Crazy cat lady' stereotype too profitable

Cat lovers, you're more than just a mass-produced stereotype and this is why you should not buy into it, **page 10**



@EasternNews

Tweet us about upcoming events going on around campus.

Thursday, April 16

Graduate Research and Creative Works Symposium

For times, see ewu.edu | For locations, see ewu.edu

April 16-18

National Conference on Undergraduate Research

For times, see ewu.edu | URC

Sunday, April 19

Film Screening: "The Hunting Ground"

7-9 p.m. | Magic Lantern, 25 West Main, Spokane

Tuesday, April 21

Pride Week Featured Speaker Alfreda "Freda" Lanoix

10-11:45 a.m. | 207 Monroe Hall

Tuesday, April 21

Contemporary Issues in Feminist Research: Helen Andelin's Fascinating Womanhood Movement

12-12:50 p.m. | 207 Monroe Hall

CAMPUS MALL: CONTINUED FROM FRONT

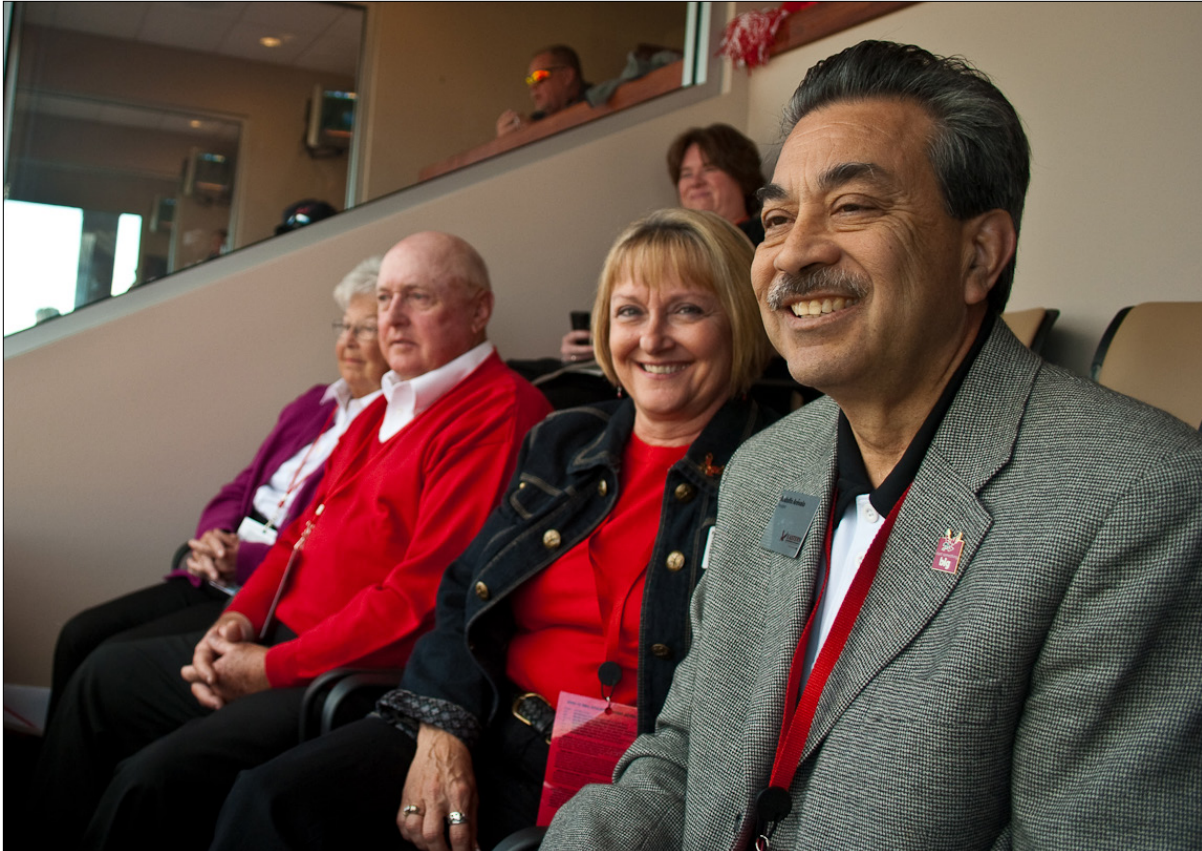
their contributions. The plaque will be unveiled at the event.

The entire cost of the event and plaque is \$5,800, according to Westfall.

According to the press release the event will begin at 3 p.m., which Westfalls said should last about 30 minutes.

"I think Dr. Arévalo and Nadine left a very positive mark on this campus," said Westfall. "When you look at the times that

Dr. Arévalo, with his leadership, helped navigate us through the great recession it was a very difficult time and we actually, as a university and as an institution, came through it fiscally strong as you can be through dire economic times."



The Arévalos in attendance at the 2009 homecoming football game.

Contributed by Eastern Washington University



The plaque honoring the Arévalos will be installed at the campus mall.

Photo by William Hayden

Eastern Washington University Pride Center Presents

EWU PRIDE WEEK 2015

MON 4/20
FACES OF PRIDE - PHOTO EXHIBIT - ALLIES AT EWU
 11am - 1pm - Campus Mall
POPCORN & A MOVIE - "PRIDE" - A British Comedy
 4pm - Pride Center - Showalter Hall 109

TUES 4/21
ALFREDA LANOIX - THE JOY IN THE JOURNEY
 10am - 11:45am - Monroe 207
BI/PAN/A-SEXUALITY BINGO
 1pm - Pride Center - Showalter 105

WED 4/22
THEN VS NOW: LGBTQ SENIORS AND YOUTH PANEL
 10 - 11:30am - Check Website for Location
HOW TO DO DRAG WORKSHOP & STUDENT DRAG SHOW
 How To Workshop - 3PM - Student Drag Show 6pm - Showalter 109

THUR 4/23
CONCERT - ERYN WOODS
 Campus Mall - Noon
HOW TO BE AN LGBTQ ALLY
 4pm - 5:30pm - Pride Center
ASH BECKHAM
 "A Closet is No Place to Live"
 7pm - Showalter Auditorium

FRI 4/24
DIVERSITY DANCE AND RAINBOW SOCIAL
 6pm-7:30pm - PUB 354

Info: 509-359-7870 or pride@ewu.edu
 www.sites.ewu.edu/pridecenter

Students with special needs may make arrangements for accommodations by calling 509-359-7870 by 4/17/15.

APRIL 20-24

6th Annual

LAVENDER GRADUATION

May 8, 2015

Join the EWU Pride Center for the 2015 Lavender Graduation, a cultural celebration that recognizes LGBTQ and ally students from Spokane area colleges, universities and high schools.

Keynote Speaker

RON SIMONS

of Simon Says Entertainment

Three Time Tony Award Winning Broadway Producer

Friday, May 8, 2015
6-8pm
Showalter Hall Auditorium
EWU - Cheney Campus

Graduates: To Participate in the Lavender Graduation visit the Pride Center Website to Register
www.sites.ewu.edu/pridecenter or call 509-359-7870

Persons with special needs may make arrangements for accommodations by contacting the Pride Center at 509-359-7870 or pride@ewu.edu by 4/28/14.

For more information and a current, full listing of EWU events, visit <http://ewu.edu>.

Wednesday, April 22

17th Annual HOME Child-care Scholarship Fundraiser Tea. \$10 per student.

2-4 p.m. | 207 Monroe Hall

Thursday, April 23

Jared Diamond, author of "The Third Chimpanzee, Guns, Germs and Steel, Collapse and The World Until Yesterday," will be a guest lecturer at Eastern Washington University

For more information, visit ewu.edu

Monday, April 27

What Can You Do with a Women's and Gender Studies Degree?

11:30 a.m. | 207 Monroe Hall

Tuesday, April 28

Friends with Benefits - Passing Fad? More Than a College Experience? Please join Theresa Martin, PhD, Psychology

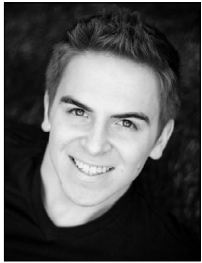
12-12:50 p.m. | 207 Monroe Hall

Tuesday, April 21

Update: Seniors, make sure you buy your tassel, cap and gown at the EWU Bookstore sooner than later. You can also buy decorate tassels, graduation pens, Eastern pins, stoles of gratitude and more!

COLUMN

SAE incident reflects drawbacks in Greek communities



NATHAN PETERS

Eastern's Greek community is a small one. Despite the competition between houses, we are one big Greek family. Taking a look on a national scale, all Greeks are part of a larger family of networking organizations. When incidents like the University of Oklahoma Sigma Alpha Epsilon (SAE) fraternity take place, it affects all Greeks.

These incidents are opportunities for the Greek family to come together and find solutions to these issues so they won't happen again. As a fraternity member myself, the SAE members represent me and many other Greek men and women.

The SAE Oklahoma Kappa chapter was recorded singing a racist chant on a bus, with

the video being leaked onto the Internet. The members had to move out as the chapter was closed by the SAE headquarters shortly after the leak of the video. The University of Oklahoma president took swift action against the fraternity: Two members identified as leaders of the chant in the video were expelled from the university.

Nickolas Robbins, the University of Utah assistant dean of students, said he commends the University of Oklahoma president for knowing his campus, students and community in his response against the fraternity chapter and its members.

"That kind of behavior and sentiment has no place in institutions of higher education," said Robbins.

When I first learned of this video and that a chapter affiliated with such a large national fraternity did it, I was shocked. According to a SAE headquarter media re-

lease, the fraternity confirms the chant was shared at a past leadership meeting. SAE is one of the largest social fraternities with 237 groups across the nation.

Most Greek organizations have official songs; some may even have unofficial, traditional songs taught by members to the next generation within chapters. This chant is one of the unofficial, traditional songs taught between chapters.

Robbins said the University of Utah is taking this incident as an opportunity to evaluate its own community to create inclusion.

For Eastern, I believe this is an opportunity to look within our own organizations for signs of any actions

or house that stray from our values. Greek organizations are all values-based: As a Sigma Phi Epsilon member, our core principles are virtue,

"That kind of behavior and sentiment has no place in institutions of higher education."

Nickolas Robbins

University of Utah assistant dean of students

diligence and brotherly love.

Samantha Armstrong Ash, Ph.D., EWU associate director for Student Activities, Involvement and Leadership, said, "For the Eastern Washington University community, I think one of the things we need to start doing is we have to recognize we are

joining private, values-based organizations."

Similar to what Armstrong said, Robbins said Greeks must get back to what their founders had started and back to their values. He said we need to stop looking back-

ward but toward the future: "Look forward and reevaluate what it means to be a [Greek] member now."

Armstrong said, "We can't just argue it doesn't happen when people see it happening all across the country. We actually have to do our work to prevent it from happening [at Eastern] and to live our values. When you do your work, when you hold yourself to a higher standard, people start seeing that in your community; you don't have to spend as much time fighting the stereotype. You just have to do your work."

The SAE video incident at the University of Oklahoma serves as an opportunity for Greeks to come together. This incident reflects poorly on all Greek organizations and all Greek members. This is the time for Eastern's Greek community to take a stand and refocus on our values to better our members, campus and community.

Eastern professor, SPD captain study discrimination

By LELIA THATCHER contributing writer

EWU's Ed Byrnes, Ph.D., teamed up with Captain Brad Arleth of the Spokane Police Department to gather and study data on officer initiated contacts with civilians. The goal was to determine whether or not there was racial discrimination within the SPD.



Byrnes

Data was gathered from 7,021 stops between March and August of 2014. Every time officers initiated an in-person contact that either did or was likely to involve an officer detaining a civilian, they used an electronic instrument to report the nature of the contact as well information such as the race, age and gender of the person or persons involved.

The data showed the rate of contact between officers and persons of African American and Native American race were dispro-

portionate beyond what a level of chance would allow.

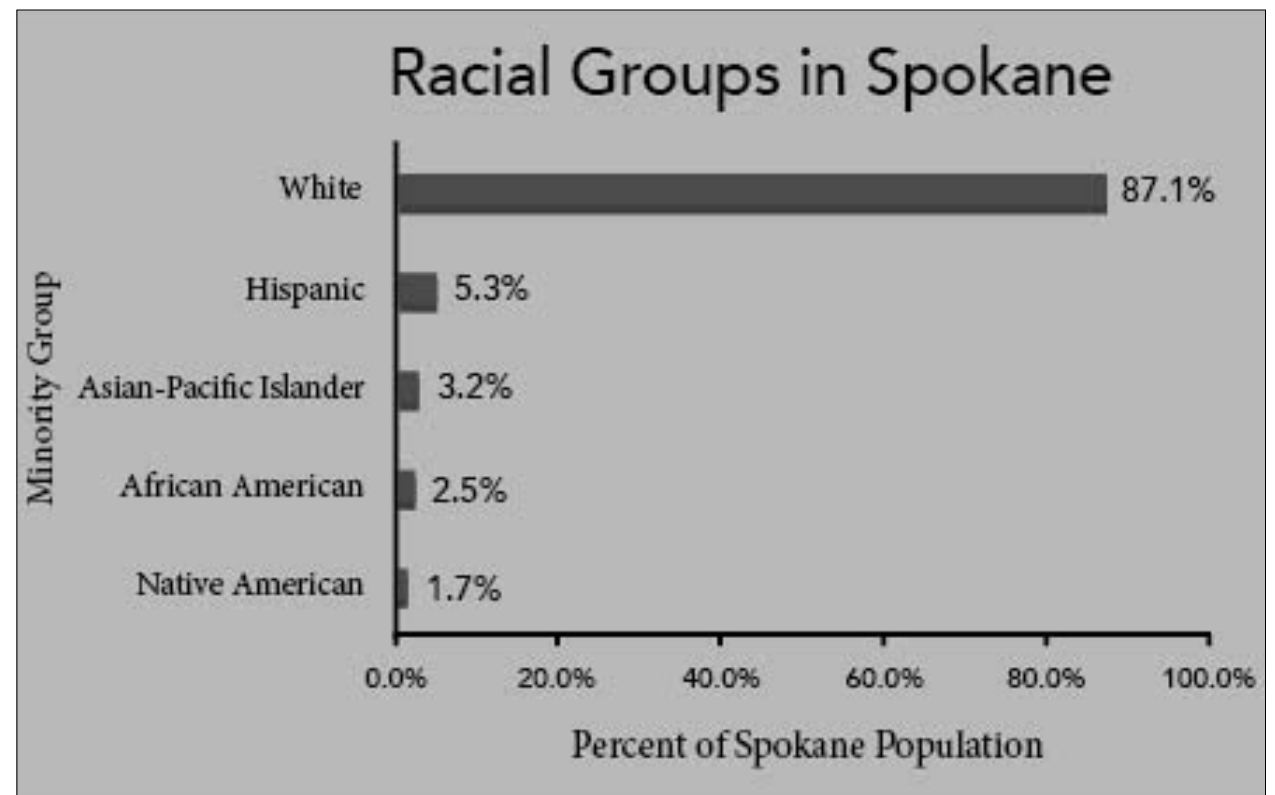
The report stated, "African Americans are 2.5 percent of the city of Spokane population and were 6.1 percent of contacts. Native Americans are 1.7 percent of the city population and were 3 percent of contacts."

The rates of searches or arrests were racially disproportionate as well, but the report stated it appears the disproportionality in initial contacts "is what drives the subsequent disproportionalities in searches and arrests."

According to the report, 632 arrests were made and 570 searches were conducted throughout the period of the study. African Americans were 10.9 percent of civilians arrested and 10.4 percent of those searched. Native Americans were 7.6 percent of civilians arrested and 8.4 percent of those searched.

"The rates of arrests are disproportional, but the reasons for those arrests or searches are not," said Byrnes. "There is no evidence of bias in the reasons."

What the study could not con-



Graphic by Kayla Lee

Information provided by Officer Contacts with Civilians and Race in the City of Spokane: A Quantitative Analysis.

clude was why the rates of initial contact were disproportionate in terms of race. Police Chief Frank

Straub said, "What we're trying to figure out is what brings those people to the police and what

brings the police to those people."

SPD-PAGE 7

InRoads COVER ART CONTEST

Winning Artwork will be featured on the cover of InRoads' newest issue to be released June 2015

Winner receives \$100 CASH

- Open to all EWU students and WITC participants
- Digital submissions only (design or photography)
- Minimum 300 dpi/ppi
- .tif and .pdf files preferred (.jpeg acceptable with no compression)
- Cite "InRoads Cover Art" in the subject header
- Include name, address, email, and phone number in the body of email

Due April 20th

For all inquiries and submissions, please send your artwork as an attachment to the Managing Editor at davestorment@eagles.ewu.edu

Donate plasma today and earn up to **\$300 a month!**

Who knew I could earn money, save lives, and get free wi-fi at the same time?

2126 N. Monroe St, Spokane 509-340-6406
9621 E Sprague Ave, Spokane Valley 509-926-1881

Scan for an insider look at the plasma donation process

To scan and view content, you must download a QR code reader from your App store.

*Applicable for eligible, qualified new donors. Fees vary by weight. New donors must bring photo ID, proof of address and Social Security number.

CSL Plasma
Good for You. Great for Life.





Visit easterneronline.com for the latest social events happening in Spokane. Tweet us events that are coming up @EasternerOnline.

Top news for the week

April 8-April 14



On April 11, President Obama and President Raúl Castro of Cuba met in Panama at the Summit of the Americas, the first time the top leaders have sat down for talks in over half a century.



Hilary Rodham Clinton, after two years of speculation, announced on April 12 that she would seek the presidency for a second time in 2016, saying in her announcement, "Everyday Americans need a champion. And I want to be that champion. So I'm hitting the road to earn your vote — because it's your time. And I hope you'll join me on this journey."



The funeral of Walter Scott, a victim of police brutality, drew hundreds of mourners to Summerville, South Carolina, on April 11. Scott, a 50-year-old African-American man who was shot by a white police officer, was caught on video and was shared over social media.



Rand Paul, R-KY, announced his presidential bid on April 7, saying, "I am running for president to return our country to the principles of liberty and limited government."

Graduate Symposium's authentic



Photo by Laura Lango

Graduate Research Symposium coordinator Lindsey Porter describes Symposium events in the Office of Community Engagement.

EWU's Graduate Research and Creative Works Symposium grows

By DAYANA MORALES
contributing writer

The Graduate Research and Creative Works Symposium, which is normally called the Student Research and Creative Works symposium, will take place April 16 in Monroe Hall. The symposium will start at 11:00 a.m. and end at 4:40 p.m.



Porter

The change of name of the symposium to the Graduate Research and Creative Works Symposium is only happening this year because Eastern will be hosting the National Conference on Undergraduate Research (NCUR), which gives a chance to the undergraduate students who wanted to present in the symposium this year to actually still participate.

This year the Graduate Research and Creative Works Symposium is only open to graduate students.

"All symposium abstracts must have at least one faculty mentor who agrees that the project is of value and of worth to the discipline. Other than approval from the faculty mentor

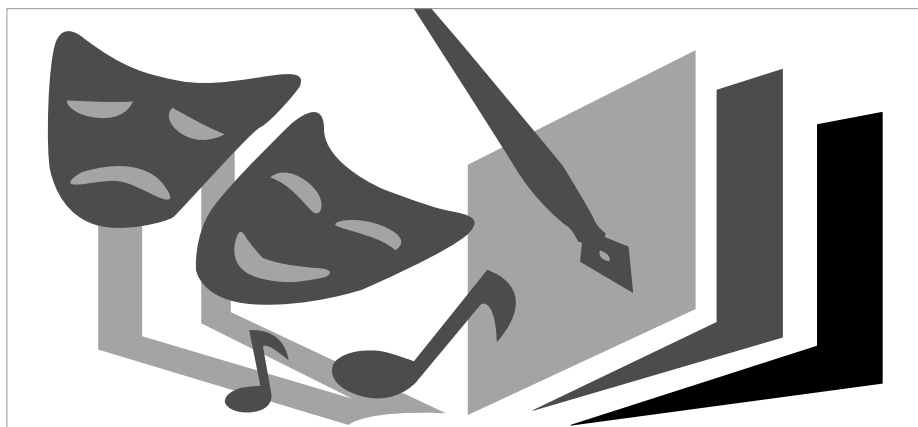


Illustration by Joseph Weeden

all symposium abstracts are accepted," said Lindsey Porter, the symposium coordinator. All symposium abstracts submitted were accepted, unless they were not EWU graduate students.

There will be a total of 78 students presenting at the symposium. There are a total of 49 presentations broken down into three categories, one creative works presentation, 23 oral presentations and 25 poster presentations. This year the symposium will be covering 19 of Eastern's departments. There were 34 faculty mentors that

served all the students presenting with their projects and are sponsoring them as well.

"All symposium abstracts must have at least one faculty mentor who agrees that the project is of value and of worth to the discipline."

Lindsey Porter
EWU Symposium coordinator

Symposium Events & Times

At 11 a.m. all presenters will begin check-in at the west entrance of Monroe Hall.

At 11 a.m.-12 p.m. there will be lunch and refreshments in room 109.

At 12-2 p.m. the poster presentations will be occurring in room 205 (second floor lounge.)

At 2-4:40 p.m. the oral and creative works presentations will be taken place. These presentations are broken down into three sessions:

1. Session 1 will include Physical Therapy, Occupational Therapy and Public and Music in room 102.
2. Session 2 will include Biology and English - TESL in room 107c.
3. Session 3 will include Education (creative works), Anthropology, Public Administration, Communication, History and Interdisciplinary Studies in room 114.



- We Welcome Families & Children of all Ages
- Full Service Quality Dentistry
- Friendly Caring Atmosphere
- Convenient Hours
- Prompt Emergency Care
- Botox Treatments

For your comfort, we offer pillows, blankets, iPods with headphones, sunglasses and beverage bar. Nitrous Oxide Available.

Delta Dental, CIGNA & MetLife Preferred Provider

\$100 OFF
YOUR FIRST BOTOX VISIT

Refer 3 new adult patients
(over 14 years)
to our practice and get \$50!



Andrew F. Martinssen, DDS
Comprehensive dentistry with a gentle and artistic touch
625 B Street Cheney, WA 509-235-6137
info@cheneydental.com martinssendds.com

GetLit! Teen & College POETRY SLAMS

Wednesday April 22 with prizes for 1st, 2nd, and 3rd place

doors/sign ups at 6:00

Teen SLAM @ 6:30

College SLAM to follow

with feature reader
KRIS DINNISON

@ THE BARTLETT
228 W. Sprague

visit www.GetLitFestival.org

Art festival promotes creative literacy



Illustration by Lauren Campbell

Monday, April 20

6:30 p.m. • Beacon Hill Reading @ Hagan Foundation Center for the Humanities, SCC

8 p.m. • Spokane Poetry Slam Finals, hosted by RiverLit @ The Bartlett

8 p.m. • Window Dressing Exhibit Walk @ Window Dressing Exhibit #1

Tuesday, April 21

12 p.m. • Contemporary Issues in Feminist Research: A talk by EWU professor Julie Neuffer @ EWU Cheney campus, Monroe Hall, room 207

8:30 p.m. • From Page to Stage: Presented by Willow Springs and WAAC @ Nyne Bar & Bistro

6 p.m. • Landmarks Reading Presented by Spokane Arts & Get Lit! @ Spokane City Hall Chambers

7 p.m. • "Alice in Wonderland" Presented by Book-It Repertory Theater @ The Lincoln Center, Lincoln Ballroom

Wednesday, April 22

12 p.m. • Storytelling workshop with Anna Witte @ Eastern Washington University, PUB 206

7p.m. • ATinySenseofAccomplishment: Live! (LIMITED) @ Lair Auditorium, Spokane Community College

6:30 p.m. • Teen & College Poetry Slams, with featured reading by Kris Dinnison! (LIMITED) @ The Bartlett

Thursday, April 23

11 a.m. • Creative Bootcamp Workshop LIMITED @ EWU Riverpoint Campus

10:30 a.m. • Q&A with Sherman Alexie @ Hagan Foundation Center for the Humanities, SCC

7 p.m. • Into the Wilderness with Sharma Shields & Benjamin Percy @ Riverside Place, Commandery Room

9:30 p.m. • 4th Annual Pie & Whiskey Reading (LIMITED) @ Woman's Club of Spokane

Friday, April 24

3 p.m. • EWU Workshop with Walter Kirn (LIMITED) @ EWU Riverpoint Campus

7 p.m. • In Conversation with Walter Kirn and Shawn Vestal @ Riverside Place, Commandery Room

9:30 a.m. • IT'S A BIRD ... IT'S A PLANE ... IT'S A COMIC ARTIST OF THE INLAND NORTHWEST! @ Spokane Falls Community College, Building 24, room 110

9 p.m. • Poetry Salon @ The Bartlett

Saturday, April 25

4 p.m. • Youth & Middle School Poetry Slams, hosted by WITC @ Auntie's Bookstore

9:30 a.m. • Workshop: First Impressions with Molly Giles @ Spokane Convention Center

9:30 a.m. • Workshop: From Image to Poem with Yvonne Higgins Leach @ Spokane Convention Center

9:30 a.m. • Workshop: Characters Are People, Too with Bruce Holbert @ Spokane Convention Center

9:30 a.m. • Workshop: Moving the Body, Writing the Mind with Renee D'Aoust @ Spokane Convention Center

11:30 a.m. • A Reading Public @ Spokane Convention Center

12 p.m. • Romance Novels, Alpha Males and Feminism @ Spokane Convention Center

12 p.m. • A Writing Life that Pays the Bills: Professional Writers on How They Do It @ Spokane Convention Center

1 p.m. • A Reading by Bruce Holbert & S.M. Hulse @ Spokane Convention Center

1:45 p.m. • Writing the Middle East: Panel Discussion @ Spokane Convention Center

1:45 p.m. • Writing for Children & Young Adults: Trends, Issues, and Why We Do It @ Spokane Convention Center

2 p.m. • A Reading by Molly Giles and Melanie Rae Thon @ Spokane Convention Center

3 p.m. • Blue Begonia Reading @ Spokane Convention Center

3:30 p.m. • Workshop: Generating New Work with Melanie Rae Thon @ Spokane Convention Center

3:30 p.m. • Workshop: Reading and Writing Villanelles with Jeremy Pataky @ Spokane Convention Center

8 p.m. • The Round #7: Get Lit! Edition (LIMITED) @ The Bartlett

5 p.m. • Raintown Almanac Reading @ Whitworth University, Hendrick House

Sunday, April 26

2 p.m. • Regional MFA Reading @ Barrister Winery

4:30 p.m. • Inland Northwest Faculty Reading @ Barrister Winery

12 p.m. • Lost Horse Press Reading @ Peacock Room, Davenport Hotel

Event information from getlitfestival.org/festival/schedule

No matter what degree you are pursuing, you might consider topping it off with an MBA. Eventually, everyone needs to understand the financial dynamics of the profession they have entered.

Learn how to lead, manage and inspire, whether you are an engineer, a musician or a historian!

An MBA from EWU will give you proficiency in the following areas:

- Accounting • Analysis and Decision Making • Critical Thinking • Executive Level Communication • Financial Analysis • Managing and Leading Employees • Strategic Objective and Policy Establishment • Tactical Marketing Planning and Execution •



For more information, contact: Lorene Winters, Program Coordinator
509.828.1232 • mbaprogram@ewu.edu • ewu.edu/mba



THINK SUMMER



With **more than 500 summer courses** at EWU, the opportunities are endless. Summer classes are condensed into 4- and 8-week sessions, enabling you to **finish faster.**

Start planning now.



EASTERN
WASHINGTON UNIVERSITY
start something big

summer.ewu.edu

f EWUSummerSession @EWUSummer



SPD:
CONTINUED FROM PAGE 3

The report could not conclude whether there were any racial disproportionality in the use of force by the SPD. There were only 22 incidents in which force was used, which is not enough data to make any solid conclusions.

Rachel Doležal, Africana Studies professor at EWU

and chairwoman of the police ombudsman commission, said she believes that while the study is certainly helpful, it is not the only thing that should be taken into account.

"One kind of danger is that people will take that report and see it as being the answer, you know, the data that will prove there is or isn't racism," said Doležal. "I feel like the public needs to

welcome the Byrnes report as, again, a valid angle on the conversation, but again, not something that should eliminate other perspectives."

The study is ongoing with a second report scheduled to be released in October that will provide answers to further questions. Byrnes said, "[The SPD] has been more open than I've ever known them to be before."

Easterner rates: TV

★★★★★

It's pretty much an average episode 1, catching you up on what's going on in general. Overall, I would say that season 5 of "Game of Thrones" is setting itself up to be as action-packed, story-driven and character-centered as the last four seasons. After watching this episode, I am quite literally counting down until the next.

It was a little slow, but I realize they are setting up for a crazy season, from the looks of the first.

- Kayla Lee
Page Designer

Game of Thrones Season 5 Premiere

Rating: TV-MA
Seasons: 4
***Availability:** Amazon, HBO Go, Google Play,
Air time: Sunday, 9 p.m. HBO

★★★★★

GOT is great because of the tangled back story that is impossible to keep up with, but I was ready for season 5 to move forward. I'm so ready for dragons and white walkers. I believe the episode was necessary and sets up the rest of the season to be epic, but I wanted more bang with such an anticipated premier.

- Sam Deal
Sports Editor

★★★★★

While the first episode of season 5 may not have the intense moments that other season openers have had, it does a fantastic job of setting the scene for events to come. With possible character collaborations coming into play, one can only hope that winter comes soon.

- William Hayden
Page Designer

★★★★★

The ending scene brought the intensity that we are used to and gave that familiar shock when the ending credits appear.

- Claire Simpson
Copy Editor

*Instant streaming; some services may require membership and/or additional payment

★ I'd rather study on a Friday ★★ No second date for this one ★★★ Better than my morning coffee

★★★★ I can't stop watching this show ★★★★★ This show is my life now

THE EASTERNER

Serving the EWU community since 1916

Address:

The Easterner
EWU, Isle Hall 102
Cheney, WA 99004

Purchasing:

The first copy of The Easterner is free. Additional copies may be purchased at Isle Hall 102 during staff hours.

Advertising:

If you would like to place an ad or classified ad, call 509-359-7010, FAX 509-359-4319 or send an email to advertising@ewu.edu

Advertising Manager:

Renee Houchin
advertising@ewu.edu
509-359-7010

About your paper:

All content in The Easterner is either produced or chosen by EWU students. Our goal is to provide relevant information to the students, faculty, staff and residents of the communities surrounding EWU.

Circulation:

The Easterner publishes a weekly print version as well as web content during the week at www.EasternerOnline.com. The Easterner is distributed throughout the Cheney campus and business district as well as Riverpoint and various Spokane businesses. If you would like The Easterner to be distributed at your business call the Advertising Department at 509-359-7010

Writer's meetings:

All content in The Easterner is either produced or chosen by EWU students. Our goal is to provide relevant information to the students, faculty, staff and residents of the communities surrounding EWU.

News line:

If you have a tip, letter to the editor, press release or an idea for a story, please call The Easterner tip line at 509-359-6270 or the general office line at 509-359-4318.

EDITOR-IN-CHIEF

Nicole Ruse
easterner.editor@gmail.com
509-359-6737

MANAGING EDITOR

Nathan Peters
easterner.mc@gmail.com
509-359-4318

ONLINE EDITOR

Brian Patterson
easterner.online@gmail.com

CHIEF COPY EDITOR

Eric Long
easterner.copy@gmail.com

ART DIRECTOR

NOW HIRING
easterner.photo@gmail.com

STAFF ADVISER

Jamie Neely

NEWS EDITOR

Jasmine Kemp
easterner.news@gmail.com

EAGLE LIFE EDITOR

Jaclyn Archer
easterner.eaglelife@gmail.com

SPORTS EDITOR

Samuel Deal
easterner.sports@gmail.com

OPINION EDITOR

Zoë Colburn
easterner.opinion@gmail.com

ONLINE SPORTS EDITOR

Fetlew Gebreziabher
fgebzeziabher@gmail.com

COPY DESK

Claire Simpson
Ivy Nall

DISTRIBUTER

Griffin Stiles

GRAPHIC ARTISTS

Joseph Weeden
Lauren Campell

PAGE DESIGNERS

Kayla Lee
William Hayden

PHOTOGRAPHERS

Jessica Hawley
Anna Mills
Laura Lango

STAFF WRITERS

Chris Mudd
Katie Dunn
Alexander Miller
Ariel Kimbleton
Brandon Cline

Police Beat



Illustration by Joseph Weeden

Two students were cited after hosting a party on the third of LA Hall.

By CLAIRE SIMPSON
copy editor

She felt threatened and reported the incident. Charges are still pending.

March 4

11:50 a.m.
Assault

An employee of the university and a student got into a verbal argument in Monroe Hall. As the student went to leave, the employee stuck out his foot as if to trip the student, who reported the incident. The employee has since resigned, so the charges have been dropped.

April 9

10:00 p.m.
Alcohol

Two residents on the third floor of LA Hall were found to be hosting a party in their room. There were 11 people in the room, all under age, but none of them were highly intoxicated. A search was permitted and officers found cans of beer, a fifth of vodka and various mixed drinks. The two residents were cited with furnishing liquor to minors. The other nine were referred to Student Rights and Responsibilities.

April 7

12:37 a.m.
Marijuana

The smell of marijuana emanating from a room on the third floor of Dressler Hall brought officers to a group of six students. One of the two residents refused a search; he seemed nervous, had bloodshot eyes and wide pupils. The residents were both referred to Student Rights and Responsibilities.

April 10

10:18 p.m.
Marijuana

A CA in Streeter Hall noticed the smell of marijuana on the sixth floor. Inside were three students who had allegedly come from a friend's house off campus. All were under age and they permitted a search of the room. Officers found a plastic baggie with a brownie inside. The owner admitted to it being a marijuana brownie, so she was cited and released.

April 8

11:58 a.m.
Burglary

A professor in the Science Building reported that someone had come into their office during the night and used his laptop. A drawer in his desk that held some of his passwords was also opened. The investigation is pending.

April 11

1:24 p.m.
Fire

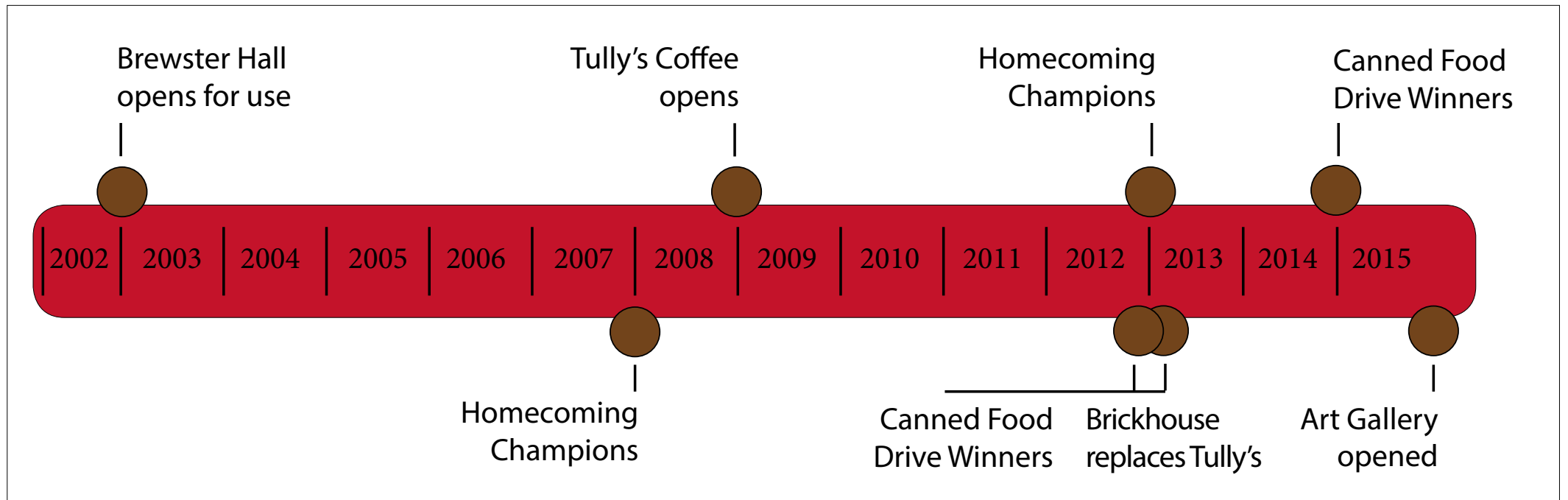
An appliance fire occurred at The Roost when an employee turned on a grill. She opened it to find flames two feet high and shut it off again. The flames did not go out and grew larger. The fire department was unable to find propane leaks or excess grease. There is no damage to the appliance.

3:30 p.m.
Assault

A student was talking to a faculty member in her office in Patterson Hall. He was having trouble getting his point across, so he grabbed her arms and held her down in the chair.



@EasternerOnline - Interested in working for The Easterner? We're hiring. Check EagleAXIS for details.



Graphic by Kayla Lee

Information from ewu.edu

BREWSTER: CONTINUED FROM FRONT

"I remember the construction being kind of noisy," said sophomore Hayden Cain, a Brewster Hall resident. "My room is two floors right above where it was going on. It wasn't too bad, though. It would start around 9 or 10 in the morning when people were usually going to class, so I didn't mind too much. I'd hate to be on the second floor, though."

Originally, the art department was planning to have a larger role in management of the gallery, but time and staffing constraints resulted in Student Affairs assuming full control.

"At first, I wasn't sure if it was going to be ... an art department thing and then if it

was, I needed to have the support to run it. ... It's actually quite a bit of work," said duMonthier.

The art department will host future exhibits in the new gallery, as will the design department, whose faculty are guest curating the first showcase to fill the space.

"We hope, actually, that eventually we can have student shows there, faculty shows there, but really, it's happened so fast that we haven't looked beyond [this first event]," said Mindy Breen, associate professor of design and co-curator of the event.

"Small Towns," as the exhibit is called,

will open with the official ribbon-cutting ceremony on April 30 and close on June 14. Guest curators Breen, Ginelle Hustrulid and Travis Masingale are receiving submissions from high school students in three Washington towns: Walla Walla, Colfax and Colville. These submissions will be grouped into an artistic photomural, according to the call-for-submissions flyer.

"This is a really great opportunity for students to really get involved"

Elizabeth Baker
Assistant to VP of Student Affairs

While plans have been set in motion, the residents of Brewster Hall were left uninformed of the changes happening to their dorm's event area.

"[The CAs] actually had a program set for the day that construction began that

had to be rescheduled due to short notice," said Katie Sweeney, first floor CA in Brewster Hall.

"[The residents] had no prior notice of what was happening," said junior and Brewster Hall resident Rachel Gidding. "I remember one day attending a program in the area, and then a few days later, there was construction."

Although the project has moved quickly through the stages of planning and construction while being relatively unknown, Baker is optimistic the students will embrace the gallery.

"This is a really great opportunity for students to really get involved more in what's happening within the arts section. ... So, hopefully, it will be good for the community and for Easterner."

Meet recruitment coordinator

Alicia Booth Thursday, April 16 and Friday, April 17, 2015 at the

National Conference on Undergraduate Research!

Bring this ad and receive a free gift!

WSU MBA

Find the best option for you:

- 1-Year Pullman MBA
- Executive Online MBA
 - Online MBA
 - MBA Tri-Cities
 - MBA Vancouver



Learn more at mba.wsu.edu



Carson College of Business
WASHINGTON STATE UNIVERSITY



@EasternerOnline - Do you prefer living in an apartment, a house or a dorm? • Share your thoughts with us.

OP-ED FEATURE SECTION

What's better: Dorm, apartment or house? We weigh in

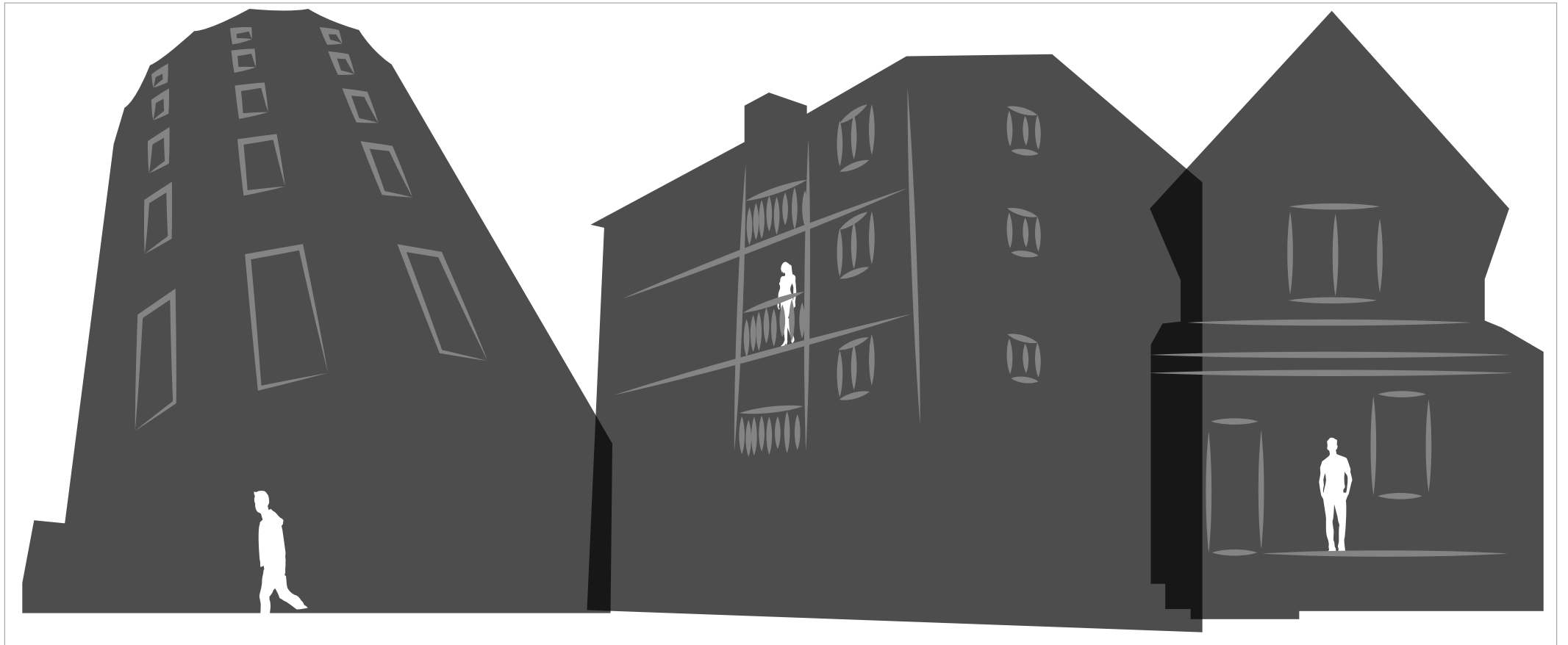


Illustration by Joseph Weeden

Despite dorm accessibility, houses provide cheaper living, more space and privacy

By ANNA MILLS
photographer

Early and often spring cleaning is what I call dorm life, at least for a girl who lived her whole life with a walk-in closet. Besides the fact that living in a dorm was conveniently close to almost everything on campus, it wasn't the best living situation. The close quarters needed some adjustment too, as the only time to yourself was when your roommate was in class or at home for the weekend.



Mills

Our neighbors picked their own lifestyle, whether it was blasting their music at odd hours of the day, hearing their beds bump against the wall, the

occasional drunken slur, or the fact that students from other floors decided to visit yours and start up conversations when we were doing homework, for once. There also were the dorm activities, which made it seem as if we were at camp, painting Christmas ornaments, or having movie nights.

I am glad I took the opportunity to live in a dorm. The majority of the people I still talk to are friends of mine from my freshman year. Some of my true "college moments" happened in the dorms or with the people I met in them.

But, the two years as a dorm member proved to me that I needed my own place. The idea of being able to do what I wanted, when I wanted, sounded like heaven at the time. I would be able to have my own room, time to myself and the ability to actually cook food because our kitchen wouldn't be closed.

Despite the fact that my closet still

wasn't big enough when I moved, I had more space of my own and a place to live in during the summer, so I didn't have to go back to my hometown. I finally had walls that I could decorate and could hold up a poster. I didn't have to sleep on a twin bed and had parking right in front of my house, rather than walking down to the football field. Yes, I spent a little more money right off the bat: buying supplies, kitchen utensils, pots and pans, but it has yet to exceed the amount I spent on a dorm room and a meal plan.

However, my roommates took on the role of my dorm neighbors. They were messy at times, had people over late into the night or bothered me by asking how to pay the bills every month. I didn't enjoy cleaning the kitchen every week because they didn't know how to or having to be sleep deprived because their friends were over countless hours into the night.

You might say it's a toss up. Dorm life

and house life. Depending on how lucky you are, you might be far off campus rather than a minute away from the PUB. Your roommate freshman year might still be your roommate now. Maybe your "freshman 15" is now your senior thirty because you realized you really don't know how to cook and beer is the only thing in your fridge, along with the fact that the gym isn't right across from the street and your senior classes are more intense than CPLA.

If ever asked, having lived in both situations, I would definitely pick the house. Just the idea that there is a little more space and privacy beats being far away from something. We are all poor and, most likely, living farther off campus will result in more exercise so we don't have to spend money on gas. My picture perfect life never started, or even surrounded, the idea of living in a dorm; therefore I will always pick the alternative.

Residence Halls equal convenience, living a step away makes college easy

By KATIE DUNN
staff writer

Living on campus creates less hassle.

The dorms are the perfect starter home for students who are not ready to take on the challenges that come with balancing school and their housing situation or for students who have never experienced life on their own and need to take baby-steps to get used to



Dunn

the changes that come with greater responsibility.

Dorms give you less to worry about.

When you move into a new apartment you have to monitor your rent, internet, electricity, water and waste bills. With a dorm room, you still have to pay for these things but only at the beginning of each quarter with everything bundled together in one bill.

If something stops working in a dorm, like a sink that won't drain, you can fill out a work order form, and it'll be fixed promptly. There is no need to go through any higher authorities and a plumber is usually sent over

as soon as possible so you're not waiting for a landlord to deal with the problem.

Because the dorms are within a reasonable walking distance from most of the classes Eastern offers, excluding classes on the Riverpoint campus, most dorm students do not have a long commute from home to class.

Closer classes mean you can relax at home longer and transportation is less of a concern because if you don't have to drive, you never need to worry about finding a parking space or having the right amount of change for a meter.

Eastern's campus offers a variety of places to get food

in a rather small area so you don't have to go out of your way to grab a meal, unless you live in Brewster Hall.

Brewster does have The Brickhouse Deli right on the first floor, but the meal options are very limited there.

According to Paul Kile, assistant director for EWU's dining and catering services, food choices at The Brickhouse Deli are limited because Brewster Hall is not a high traffic location.

But that doesn't mean Brewster Hall lacks food options, though, because the dorm is situated by other

LIVING ON CAMPUS-PAGE 10

THE EASTERNER

Serving the EWU community since 1916

LETTERS TO THE EDITOR

Zoë Colburn
Opinion Editor
easterner.opinion@gmail.com

Requirements:

- Letters should be 300 words or less and typed, or legibly handwritten.
- Include your full name, signature, telephone number and email address for verification.
- We reserve the right not to publish letters; furthermore, all letters are subject to editing.
- Letters must be received no later than Monday at 10 a.m. in order to be considered for publication the following Wednesday.
- If your letter is in response to a specific article, please list the title and date of the article.

Editorial policy

We encourage the EWU community to submit letters and opinion pieces that conform to the requirements listed above. Opinion articles and letters to the editor do not necessarily reflect the views and opinions of The Easterner, its staff members or Eastern Washington University.

Apartments provide a middle ground, perfect for those not ready for a house

By Zoë Colburn
opinion editor

Growing up as the youngest of four kids, I learned to value my privacy pretty early on, and the fact that all my siblings and I had our own rooms didn't make the transition to sharing a 12-by-9-foot box any easier.

I've lived in a couple different dorms. My freshman year, I was going to Boise State University and lived in a room with three other girls. We had our own bathroom and the room was split down the middle to give us two smaller halves, each half shared between two girls. It wasn't the worst situation, and even though I made



Colburn

friends with my roommates, it was still difficult to almost never have my own space away from everyone.

Here at Eastern, I lived in a double room in Snyamcut. I didn't have to worry about making friends with my roommate because I'd known her since I was eight, and even though we pretty much know what makes each other tick, again, not being able to close my door and tell her to leave me alone for a few hours was a huge problem.

And although I'm not exactly a dietician, I still felt like the food options on campus — both here and at BSU — were far from anything even reminiscent of a balanced diet, but the limited options for being able to buy supplies and cook my own food made eating well too much of a hassle.

Dorm living really wasn't for me; even living with a friend I've known for just about 14 years was just not my cup

of tea. I've never been good at sharing space, and the lack of having an area that was exclusively mine really did a number on my mental health.

So, last year when it came time to decide where I was living, I was pretty much out the door when it came time to sign up for housing.

Essentially, it came down to whether I wanted an apartment or a house.

Personally, I'm actually a fan of apartment living. Sure, it's small and you don't have a yard, but as far as I'm concerned I barely have the time and energy to get my dishes done before they start growing mold, let alone to tend to a yard, no matter how small. And most apartment buildings in Cheney are new enough constructions that heating bills will stay fairly reasonable.

APARTMENTS-PAGE 10



@EasternerOnline - Do you prefer cats or dogs? • Share your opinion with us.

APARTMENTS:
CONTINUED FROM PAGE 9

I have nothing against living in a house, and my roommates and I are actually looking into renting a house next year, but when it comes down to it, apartments are easier living.

They kind of land between dorms and houses — you still get enough space to call your own and you can eat food that isn't entirely salt, fat, and carbs, but you don't have the added responsibilities of lawn care, or the massive amount of extra space a lot of houses have.

The price difference isn't much, and it kind of comes down to how many roommates you want to have. If you'd rather stick with just one or two, an apartment is probably a better bet.

But, if you're OK with having upwards of four roommates and you like the idea of having the space a house provides, go for it. For me, living in the dorms just wasn't worth the loss of personal space and weight gain, but it did give me a better connection to the school.

My apartment gives me space to call my own and a small enough overall space that cleaning it isn't a full-day job. I'm not sure I'm ready to graduate to a house yet, so for now my apartment is a good place for me.

'Crazy cat lady' stereotype mass-produced

By NICOLE RUSE
editor-in-chief

While I was visiting Boo Radley's Gift Shop in downtown Spokane a few days ago, I saw a game that, at first, really intrigued me: The Crazy Cat Lady board game. I found this to be quite hilarious, and I instantly thought of a couple friends, as well as my interesting roommate who owns a young cat, who would like this game. A lot.

My roommate has a cat calendar that references crazy cat ladies, as well as numerous cat-themed memorabilia in our apartment. Even a crazy cat lady coffee mug. I deem myself a cat person too: I have an 11-year-old rescue cat named Angel and a 3-year-old named Felicia who is so mean.

With that in mind, however, I thought, "People are literally buying into a stereotype, specifically, women who deem themselves under this group." Does that make the stereotype of crazy cat ladies OK? Not in the slightest.

Why is this problematic? Advertising, female stereotypes regarding hormones and emotions and mass media are constantly producing an image — and profiting off of it — of a woman who is not in her right mind, in so few words. According to Eliza-

beth Kissling, Ph.D. and professor in the Gender and Women's Studies department at EWU, she is not too sure of the origin of the 'crazy cat lady' stereotype, yet finds that it stems from an old, familiar stereotype she heard as a college student.

"It's historically used hand-in-hand with other stereotypes and demeaning terms for unmarried adult women, such as 'old maid,'" said Kissling in an email.

By buying into this stereotype, many are continuously reinforcing this stereotype into society. A couple examples: The crazy cat lady in "The Simpsons," "The Cat Lady" video game, cat lady board game and even an action figure. Do a simple Google search, and you'll quickly get the idea.

In the article, "Stand Up for Your Cats," by Julia Baird for The New York Times, she said, "The words woman and cat don't conjure up thoughts of a glamorous fast life, but pajamas, Chinese takeout, bowls of Ben & Jerry's, couches and DVDs." Baird goes on by elaborating how even Taylor Swift constantly tweets about her cats and so far as even made her cat a Twitter account. This is becoming a growing fad with many celebrities.

Taylor Swift, under this same stereotype, constantly is referenced online as being crazy,

OP-ED

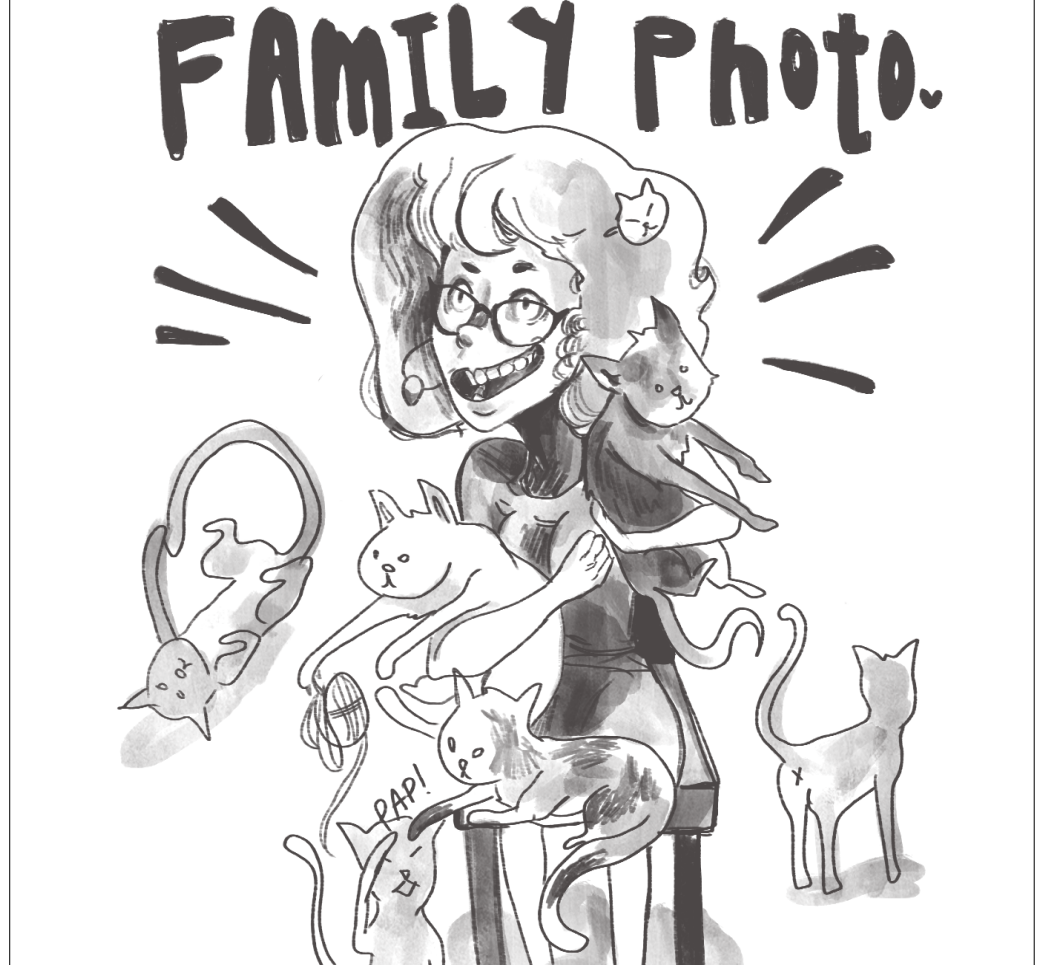


Illustration by Lauren Campbell

single, alone and "unable to keep a man." Baird goes on by saying, "Must female cat owners constantly have their sanity questioned simply because they like to coexist with purring fur balls?"

People are buying into the crazy cat lady stereotype because they believe themselves to fall under that category, therefore

validating their feelings stemmed around this societally-made stereotype.

"If the traditional goal of femininity is be attractive and charming enough to catch a husband — and it was often framed as a pursuit — then unmarried women were seen as failures, to be pitied and/or mocked.

Poor, sad, lonely old women, with no husband or children, only their cats to keep them company," said Kissling.

Cat lovers: don't buy into this senseless stereotype. It is not worth the money you make. More so, be a proud cat lover in the way that works for you, not what mass media profits off of.

Act Now! Units are limited!

SPRING IN FOR SAVINGS

Sign a new lease for the 2015-2016 school year and be entered into the drawing to win **1 MONTH FREE RENT!**

Promotion applies to qualified and approved applicants when a 2015-2016 lease is signed and complete.

Save money & live in a bigger apartment!

Eagle Point
APARTMENT COMMUNITY

Call today - 509.363.1090
1090 W. Betz Rd., Cheney, WA 99004
Visit iRentSpokane.com

1,2,3,4 bedroom and studio units available today!

LIVING ON CAMPUS:
CONTINUED FROM PAGE 9

Cheney stores and restaurants like the Owl Pharmacy and Zentropa. So even the most displaced dorm hall has convenient food around. Eastern also has a generous amount of resources for students.

"I believe the most convenient aspect for students living on campus is the access to support services, athletic events, dining, campus activities and friends,"

said Josh Ashcroft, chief officer of Housing and Residential Life. "They are literally just a step away."

The JFK library and the PUB lab provide access to computers and printers, making it easier to do homework. The URC provides opportunities to workout in the multipurpose arena, climbing wall and fitness center.

All students can have access to these resources, but when you live on campus, you're more likely to take advantage of what's offered because you're always around it.

TAKE ME HOME TONIGHT

SERIOUS DELIVERY!™
★ JIMMYJOHNS.COM ★

TO FIND THE LOCATION NEAREST YOU VISIT JIMMYJOHNS.COM

©2014 JIMMY JOHN'S FRANCHISE, LLC. ALL RIGHTS RESERVED.

The Easterner
EST. 1916
www.EASTERNERONLINE.com

News
Eagle Life
Opinion
Sports

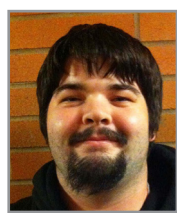
EST. 1916

Submit Your Story

www.EASTERNERONLINE.com

COLUMN

Mariners not eliminated from playoff contention



BRANDON CLINE

In the first 10 games of the 2015 MLB season, the Seattle Mariners find themselves with a record of 3-5 and while it doesn't sound glamorous, the first few weeks of the season

provide almost no indicator of how a team's season will play out.

The Mariners defeated the Los Angeles Angels 4-1 on Opening Day, their ninth consecutive Opening Day win. For those who care to forget about those past nine seasons, the Mariners missed the playoffs — the true barometer for success in baseball — each and every time.

The Mariners went on to lose the next two games and the series against the Angels, pushing their record to 1-2. Of the past six American League West Division winners though, only one team won their opening series.

There's a mindset amongst many Mariners fans though that if change isn't noticeable right off the bat, literally, that the Mariners will fall back into irrelevancy by the end of spring. Thirteen straight years of missing the postseason — eight of which have been losing seasons — have struck fear into the fanbase where many are too scared to fully embrace the team until they are still contending late into the summer.

It is well too early to fret about this Mariners team though. This team returns nearly every player who played a significant part in last year's 87 win team that was fighting for a playoff berth in the last game of the regular season.

They've added legitimate corner outfielders in Seth Smith and Justin Ruggiano, with Smith going 3-3 with three extra base hits and two runs batted in on Opening Day.

Reigning MLB home run champion Nelson Cruz was brought in, and all he's done is hit two home runs for the Mariners in their first six games, a three-run homer in the top of the eighth against the Athletics on April 11 with Seattle trailing 4-2, and a game-winning home run the very next day in extra innings to give the Mariners an 8-7 win.

The Mariners' additions have come through in clutch situations early on, thanks to Manager Lloyd McClendon not being scared to roll the dice.

With runners on second and third with two outs during Sunday's game and the Mariners up 4-3, McClendon pinch hit late offseason addition Rickie Weeks, who was just 1-14 heading into the game, for Smith to get the lefty-righty hitting matchup he desired. It paid off bigtime, as Weeks promptly crushed a three-run homer to put the Mariners up 7-3.



April 17 Mariners vs. Rangers 7:10 p.m.	April 19 Mariners vs. Rangers 1:10 p.m.	April 21 Mariners vs. Astros 7:10 p.m.
April 18 Mariners vs. Rangers 6:10 p.m.	April 20 Mariners vs. Astros 7:10 p.m.	April 22 Mariners vs. Astros 7:10 p.m.

Graphic by William Hayden

McClendon is the savviest and most competent manager the Mariners have had since Lou Piniella. He's not afraid to recycle through three relief pitchers to get three hitters out late in a game like he did on Opening Day, or to make impromptu

trips out to the mound himself to calm a pitcher down. McClendon makes his players tick, and is a calming presence during the course of both a frantic game and an exhausting season.

"He's our boss, he's the key to why this team has been so

good," said Felix Hernandez in 2014 in an interview with 710 ESPN Seattle.

Don't let the first week of a 162 game season fool you. Rome wasn't built in a day, just like a World Series contending team doesn't peak in April.

COLUMN

Let couch season begin



SAM DEAL

Spring is the best time of year to be a sports fan.

The NCAA tournament, MLB opening day, the Masters, NBA playoffs and NHL playoffs are all

rolling and more than enough to keep me planted on the couch until the dulls of mid-season baseball set in.

The early season hasn't disappointed with the best NCAA tournament in recent memory that was capped with a thrilling Duke victory over Wisconsin, who had slayed Goliath Kentucky two nights prior.

Sunday's final day at Augusta featured some of golf's best: Tiger Woods, Phil Mickelson and Rory McIlroy chasing a 21-year-old Jordan Spieth. Spieth would tie the 72-hole course record and win the tournament in a landslide.

NHL playoffs are set to start today with a wide open field where the favorite Anaheim has 9-1 odds, yet Winnipeg, the team with the lowest odds of winning comes in at 18-1, according to oddsshark.com.

This race for Lord Stanley's Cup looks to be the tightest in recent memory and if hockey playoffs have told us anything in the past, this will be one of the most exciting events of the year.

Don't worry, I'm not going to write a column on how the whole world is missing out by not being hockey fans (although I really, really want to).

Sunday NBA playoffs will begin.

The Western Conference is still far better than the east with nine teams who can all beat each other on any given night. And only eight of those teams will even qualify.

A simple solution, I don't know, maybe move New Orleans to the Eastern Conference, where geographically they belong. No, why should the NBA listen to reason?

Anyways, what would be a parity-filled West is matched by a three-horse race in the East between Chicago, Cleveland and Atlanta. The story lines are plentiful. Can LeBron James make it to a fifth consecutive championship? Can Chicago stay healthy? Is Atlanta for real without a superstar?

This is why spring is the best time of year for sports. Sorry gym but the only exercise I'll be doing for the next few weeks is curls trying to find one more chip in the empty bag and push-ups while I look under the couch for the missing remote.

Eastern Online
THE STUDENT-RUN NEWSPAPER OF EASTERN WASHINGTON UNIVERSITY

Do you tweet?
We want to follow you.
@EasternOnline

Do you miss riding since you started college?
You can ride at Relational Riding Academy!
Just 15 min from Campus
Call for an appointment with a certified instructor 509.290.4301
Possible work exchange opportunities
www.RelationalRidingAcademy.com
3174 W Anderson Rd Cheney, WA 99004

Garden Manor Apartments
Cheney's Best Value
Studio- 3 Bedrooms
\$395-\$850
720 West 1st street
(509) 235 6526
gardenmanor@centurylink.net

The Easterner EST. 1916
News
Eagle Life
Opinion
Sports
Like us on Facebook.
facebook.com/TheEasterner



LIVE TWEETS @EasternerSports

Online Read out Sports Center for timely sports info • Print See quotes and photos

April 15

Tennis vs Idaho 3:00 p.m.
Mt. Sac Relays, Walnut, California
Track and Field

April 16

Track and Field Mt. Sac Relays,
Walnut, California

April 17

Track and Field
at Long Beach Invitational @
Cerritos, California
at Mt. SAC Relays @ Walnut,
California Hilmer Lodge

April 18

Track and Field
at Long Beach Invitational @
Cerritos, California
at Mt. SAC Relays @ Walnut,
California Hilmer Lodge Stadium

Defense shuts down offense



Photo by Anna Mills

EWU tight ends run through drills prior to the first scrimmage of spring.

BY LELIA THATCHER
contributing writer

Eastern's football team has many new faces, but the impact of new defensive coordinator Jeff Schmedding was on display at the team's first spring scrimmage Saturday morning at Roos field.

The team ran 40 plays during the half hour scrimmage and the offense was held to 123 yards and just one scoring drive.

"I felt like the defense has just been hungry to really start hitting," said sophomore cornerback Jake Hoffman.

Hoffman finished the day with a forced fumble, a tackle for loss and five additional tackles.

Also making big plays were freshman Nzuzi Webster with an interception and sophomore John Kreifels with a fumble recovery.

The defense struggled last year, but Schmedding and his 4-2-5 scheme is looking to change that. "I like it because it creates a lot more space," said Hoffman. "[It] gives us a lot more opportunity to play fast, just like I always want."

Jordan West, the Eagles No. 1 quarterback heading into the

spring, completed 1 of 6 passes. West was joined by quarterbacks Gage Gubrud, Conner Richardson and Reilly Hennessey. All four completed a combined 7 of 16 passes for a total of 99 yards.

"It was some struggling with the operation, all of us, I mean it's still only the fifth practice, we definitely need to clean some stuff up and we'll go back. We'll look at the film and we'll change some stuff, just get used to more, more of the plays and all that," said West. "It was just a little rough today and we'll clean it up."

Gubrud was the only quarter-

back to move the offense significantly down the field. He completed 4 of 7 passes and rushed for a touchdown.

The rushing game was stifled as well with 48 yards on 22 carries, 24 of which were negated as a result of three sacks and two failed snaps.

"They were flying around, they were able to play with a serious speed today, which means that mentally they've gone into the spring ready and understanding, you know, what they need to do," coach Baldwin said of the defense.

Chaves to review transfer eligibility

BY SAM DEAL
sports editor

EWU Athletic Director Bill Chaves has been appointed to an NCAA committee to review and research collegiate transfer rules.

Chaves was appointed to the NCAA Division I council in December of 2014 and has a sense of familiarity with this issue.

Former Eagle Vernon Adams Jr. sparked debate early this year when he transferred to University of Oregon to compete in his final year of eligibility.

"Those are the rules we play by right now, and it certainly put us in an interesting situation," said Chaves back in February, concerning Adam's transfer.



Chaves

Chaves also questioned how many of the graduate transfers actually received diplomas in their graduate studies. He is now in a position to answer his own question.

Under its current rules, players who have already graduated but have one year of eligibility remaining can transfer to another program, enroll in graduate classes and compete immediately.

The committee will review extending the number of years a player has to complete his or her eligibility. This extension would mean graduate transfers could be forced to sit out their first year after switching programs. When players transfer under normal circumstances they are required to sit out for one year.

"Student transfers are an important issue in higher education, and it is no different in athletics," said co-chair Jere Morehead, president of the University of Georgia. "The group will be mindful of the integration of athletics and academics when creating recommendations for Division I transfer policy or legislation."

The group consists of 13 members and with representatives from 10 different Division I conference as well as the Women's Basketball Coaches Association and the National Association of Basketball Coaches.

Permission-to-contact rules which determine how university can contact players who are currently enrolled at another program will also be reviewed by the committee.

"I look forward to working with this group so that we can continue to evolve all of the issues that surround transferring from a number of perspectives," said Chaves. There has been some very good work done by others that this group will be able to use moving forward."

TRACK AND FIELD: CONTINUED FROM FRONT

kind of experience at the Big Sky Championships that you envision," said men's head coach Stan Kerr. "He's worked very hard to put himself in that position and now his performances are rewarding him."

Other event winners for the men include Jordan Arakawa winning the hammer throw with a throw of 203-3, Jeremy VanAssche in both the 100 and 200-meter dash, Brad Michael in the 400-meter run and Nick Stearns in the pole vault. The 4x100-meter relay

team also finished first with a time of 41.11 seconds.

"Today was a meet of surprises given the weather forecast. We thought the wind and the cold would play a bigger factor, but it goes to show that with a good attitude, persistence, and good leadership, those elements didn't distract our athletes from what they came to do today and they were rewarded with great performances," said Kerr.

The team will split up this weekend with two events in California; the Mt. SAC Relays in Walnut from April 15-18 and the Long Beach Invitational in Cerritos on April 17 and 18.



Photo by Anna Mills

Phillip Puccino competing at the Pelluer Invite at Roos Field.



Rarely available awesome apartments for EWU Students!

Across the street from EWU Campus at 111-119 N. 9th Street.
Fully Furnished, All Utilities Included plus Wifi and Basic Cable,
Off Street Parking, Private suites with private baths and in-bedroom
TV's furnished. Granite counters and porcelain tile floors.
Individual leases for 10 Months to 2 years.

"The nicest place in Cheney for EWU Students to live"

www.premierstudentliving.com
509-235-1928



The Easterner is now hiring non work-study positions

The Easterner is the student-led, student-run organization at Eastern Washington University. We print a weekly publication and continuously update our website (easterneronline.com).

The mission of The Easterner is to inform the students, faculty, staff and nearby residents of Eastern Washington University of the governance, activities and views of the campus while providing a learning environment for students interested in journalism and related fields.

We are currently hiring the following position(s):

Art Director
Page Designer
Staff Writer

Apply for a position through EagleAXIS today!
For questions and more information, contact easterner.me@gmail.com

Enroll in JRN 100 - Easterner Staff course today!

This 3-credit course requires student to engage in reporting and editorial assignments on the staff of The Easterner.