

4-28-1971

## Easterner, Vol. 21, No. 23, Supplemental issue

Associated Students of Eastern Washington University

Follow this and additional works at: [http://dc.ewu.edu/student\\_newspapers](http://dc.ewu.edu/student_newspapers)

---

### Recommended Citation

Associated Students of Eastern Washington University, "Easterner, Vol. 21, No. 23, Supplemental issue" (1971). *Student Newspapers*. 414.

[http://dc.ewu.edu/student\\_newspapers/414](http://dc.ewu.edu/student_newspapers/414)

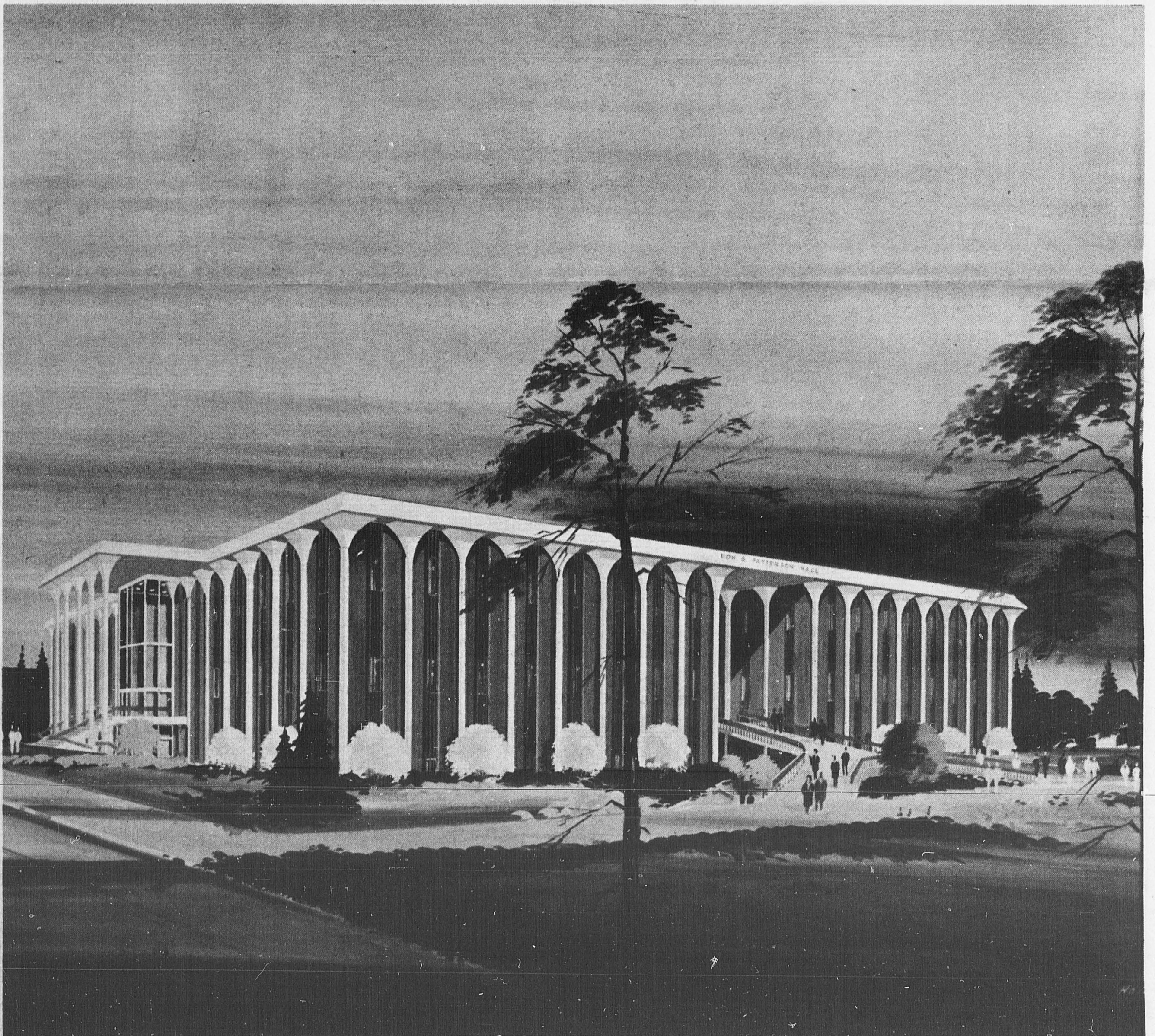
This Book is brought to you for free and open access by the University Archives & Special Collections at EWU Digital Commons. It has been accepted for inclusion in Student Newspapers by an authorized administrator of EWU Digital Commons. For more information, please contact [jotto@ewu.edu](mailto:jotto@ewu.edu).

Supplement To

# *The Easterner*

## SPECIAL ISSUE SALUTING

### Dedication of PATTERSON HALL



**WEDNESDAY - APRIL 28, 1971**

# Meet Patterson Hall's Namesake

*Don S. Patterson for whom Patterson Hall was named, became president of Eastern Washington State College in 1954 and was named the school's first president emeritus when he resigned in 1967.*



**Don S. Patterson**

When Don S. Patterson became president of Eastern Washington State College in the fall of 1954, the times were not the best of times, neither auspicious nor propitious. The college had survived over a year of inner turmoil. There was bitterness among those who had suffered most, and sadness among others. Faculty and student morale was at the lowest ebb in the history of the college. On the broader scene anti-education forces in the national and state legislatures threatened the goals of all institutions of higher learning.

One did not know whether to pity or scorn a man who would dare to accept the presidency of Eastern seventeen years ago under those prevailing conditions. Furthermore the national turnover rate of state college presidents was extremely high at that moment in history, a fact noted by the main speaker at Don S. Patterson's inauguration.

The assembled faculty — one third its current size — listened to the new president's remarks at the first faculty meeting of the 1954-55 school year. Don S. Patterson spoke briefly, as he always did. He gave hope to all who heard him. He concluded by saying:

"I want to become a good president. I need your help.

Help me to become such a president."

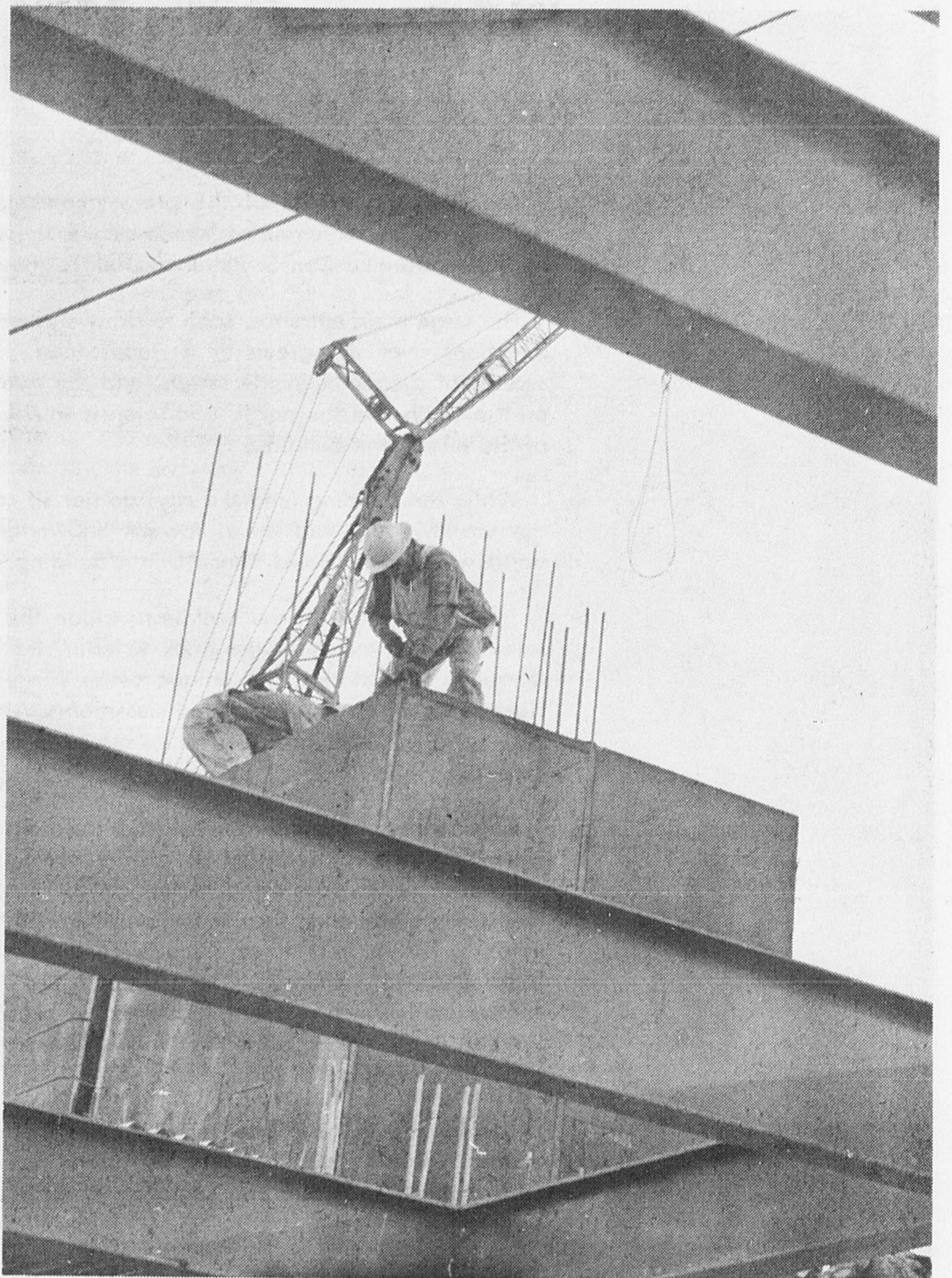
It was with this kind of humility that Don S. Patterson presided over Eastern beginning in those gloomy days and continuing during Eastern's period of greatest expansion. As president he had other traits than modesty alone. A president needs skills and talents often unappreciated by the public, the faculty, and the students.

Don S. Patterson had many of these skills and talents. And he had the courage to accept the lonely life of the presidency, perhaps avoiding close friendships at times, so that he could retain his sense of fairness as the president.

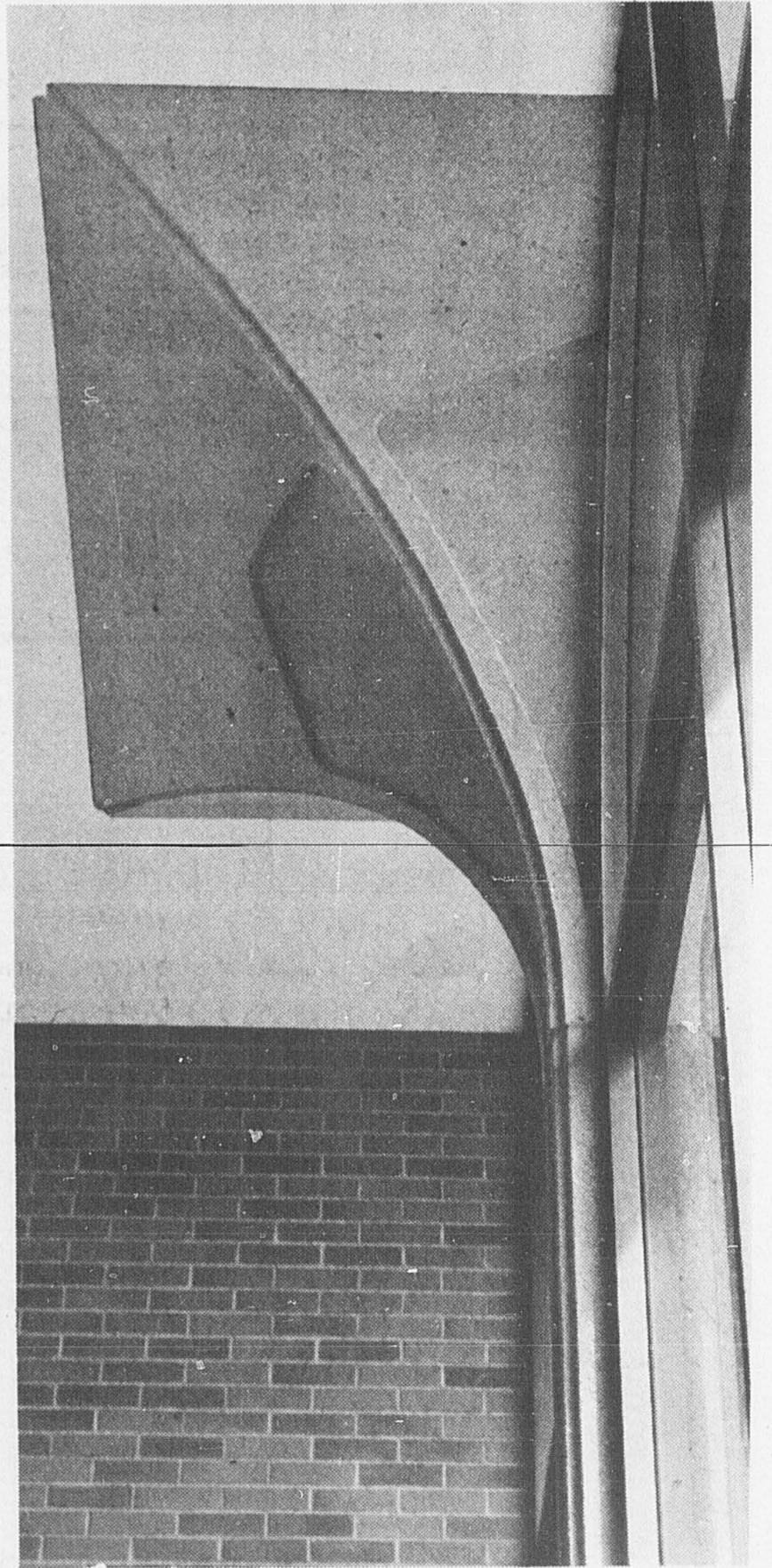
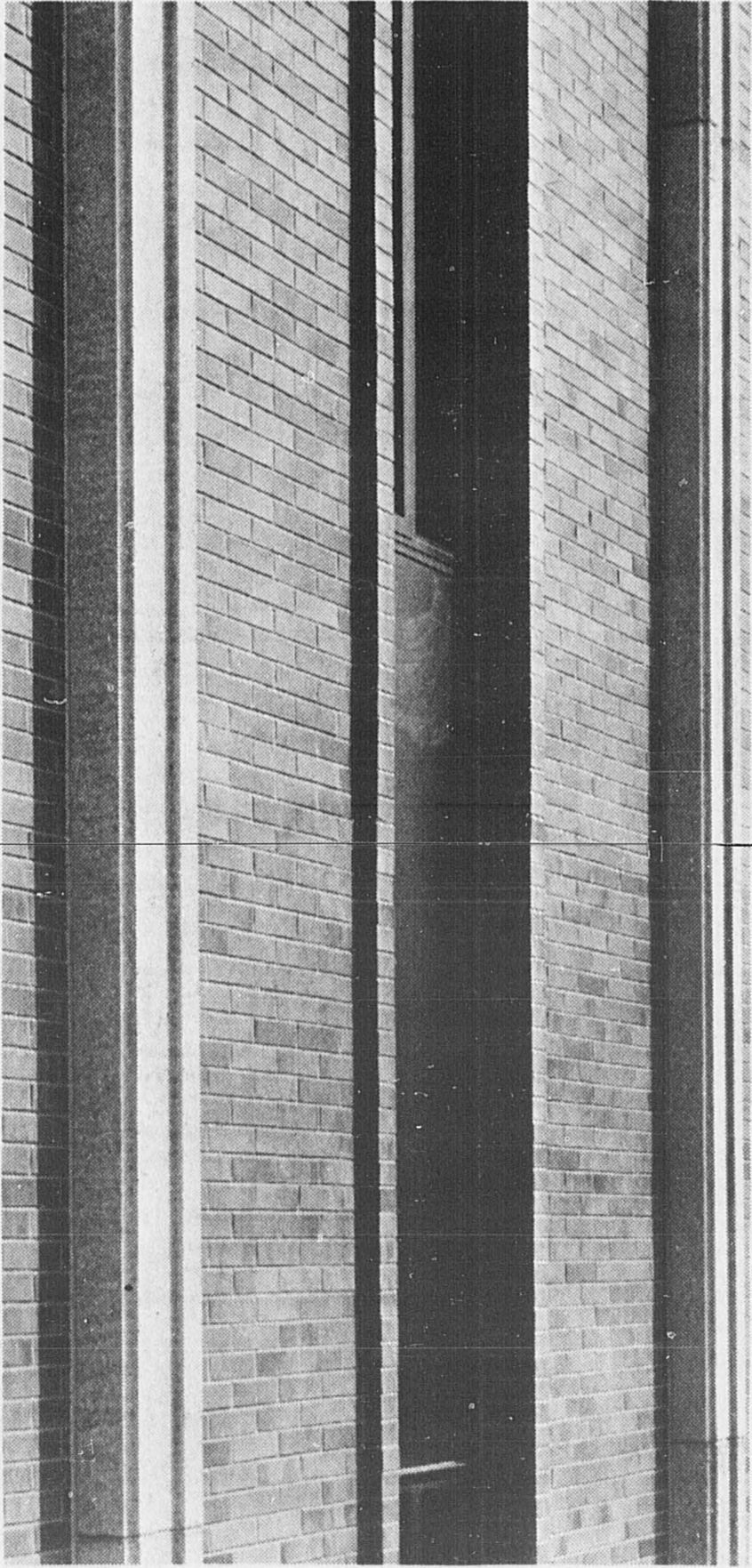
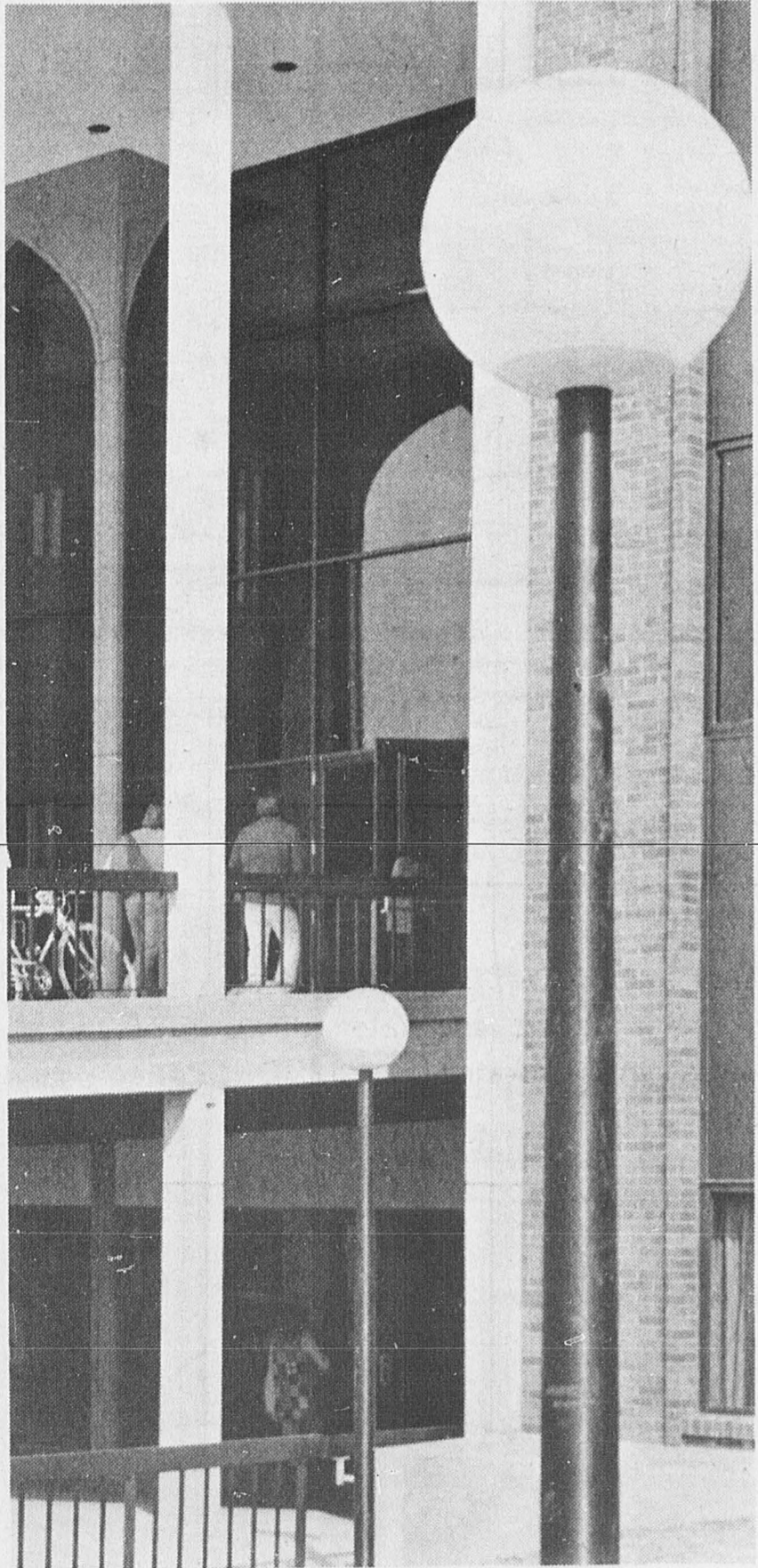
The foregoing remarks were prepared by Dr. Richard F. Miller, who served as head and later director of the Division of Language and Literature under Dr. Patterson during his term as president.

In that period, Eastern Washington State College saw its era of greatest growth, in enrollment and in building starts.

When he resigned in 1967 to move on to other challenges in higher education, Dr. Patterson was named Eastern's first president emeritus.



*Early days of construction and the impressive interior and exterior are shown in these views of Patterson Hall. Top pictures show construction in progress and bottom, two exterior views and one interior.*



# Dedication of Striking Patterson Hall Marks Zenith of Remarkable Plan

The soaring verticals of the precast concrete pilasters flanking narrow columns of windows are the first architectural feature of Don S. Patterson Hall to meet the eye.

The large main entrance, soon to draw students from all directions over the green of a landscaped mall, with accents of diagonals in the ramps, and the two entrances on the south and the north, add interest to the regularity of the rest of the building.

While the building (and the city) do not sit square with the world, south will mean toward Showalter Hall and north will mean toward Pence Union Building.

Items of interest in the building include the face brick interior walls, matching the brick exterior, the newest of language laboratories, the unique office clusters and the flexible arrangement of carpeted classrooms. Almost every area but the heavily traveled hallways is or soon will be carpeted.

The three-story glass wall of the main entrance, between north and south halves of the building, will be enhanced by the furnishing of lounge areas on all three levels. Here students, faculty and visitors will be able to meet, to talk, to rest, have a snack (on the first floor), or look across to the library and Hall of Sciences over the central mall which is being designed at present. In the lounge areas, shag carpeting will emphasize informal groupings of modular furniture.

Faculty offices have been arranged to provide ease of access by visiting students, with secretarial reception areas to provide information and direction at each end of the suite.

Fourteen or more offices, workrooms, staff meeting rooms and storage areas are provided in U-shape around a large seminar room, the many uses of which may be ad-

judged by the wide diversity of furnishings.

Generally, the offices are on the outside of the hallway and the classrooms are in the center of the building.

Starting at the south entrance (toward Showalter) and walking around the hallways to the left and returning to the starting place, the following facilities are found:

**First Floor:**

Facing the entrance is the small auditorium with projection booth, built-in screen and other facilities for a truly multi-use facility. Corridors along the walls lead to doorways at the back of the auditorium as well as to the backs of most classrooms.

Other central facilities include classrooms and seminar rooms.

On the exterior side of the hallway, a part of the history department staff occupies the first office suite. Much of the remainder of the first floor "outer" is classrooms, utility and storage rooms and washrooms. Wheelchair students find lavatories and toilet booths built and equipped to serve them. Mechanical areas are behind the classrooms on the east side of the building.

Anthropology offices are in the southeast corner of the first floor.

The general scheme is repeated on second and third floors so the following will only locate the offices along the same route:

**Second floor:**

History department main offices are along the southwest wall of the building.

The English department, humanities and journalism offices occupy both sides of the north half of the building. Political science is housed on the southeast side of the building.

**Third floor:**

Department of economics offices and Division of Sciences occupy the first suite of offices.

Foreign language faculty occupy the offices in the northwest sector, across the hall from the language laboratory.

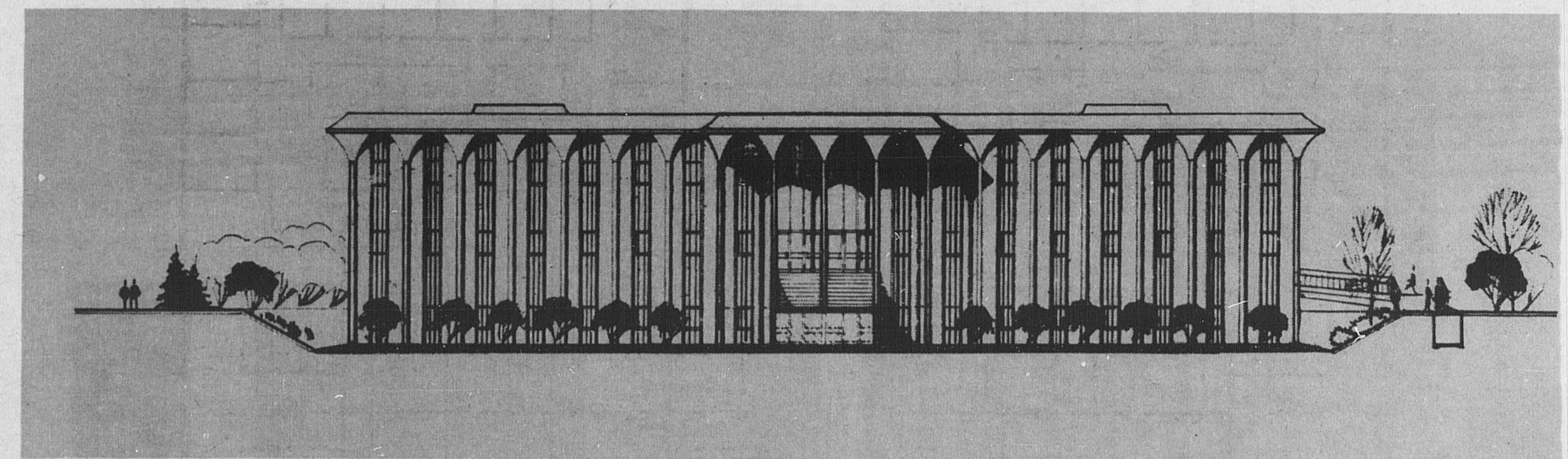
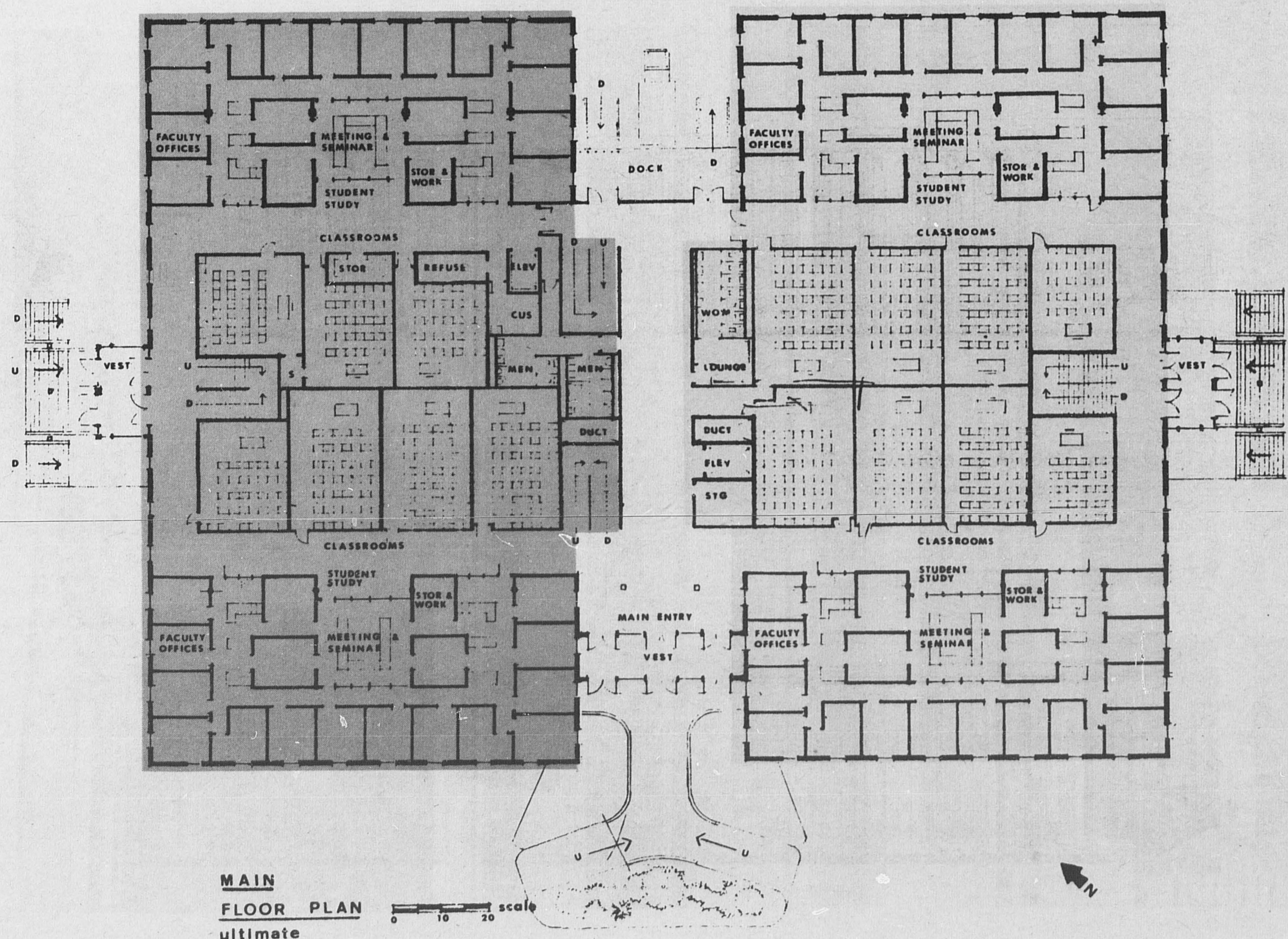
Mathematics department facilities are in the northeast sector and sociology in the southeast.

Probably the most unusual feature of the Don S. Patterson Hall is the new half of the language laboratory. Designed for "drop-in" as well as classroom work, flexibility is achieved by dial access equipment in each of four booths, clustered in each star-shaped carrel. Other individual booths line the walls and one large table provides a six-station round table.

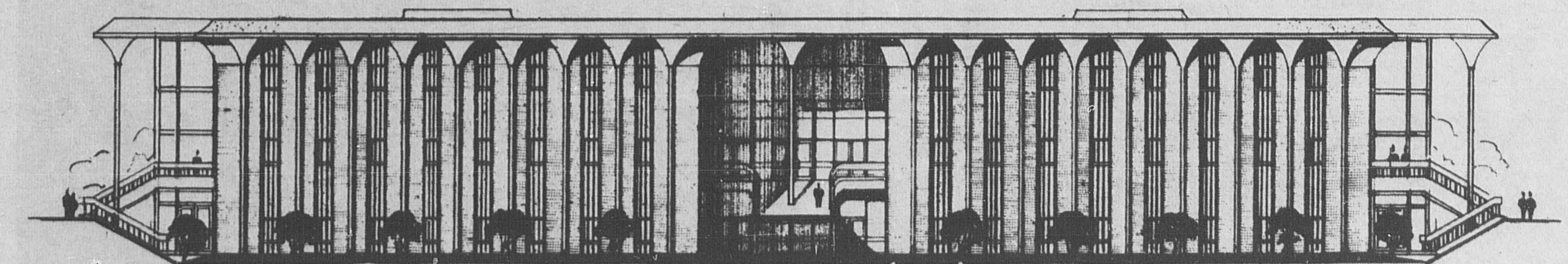
Each headset has a microphone and students can talk to the laboratory operator, or can dial into any number of programs set up by the operator in the desired language. Through the switchboard the operator or instructor can talk to any individual or all students.

The control and equipment room is between the new dial-access lab and the laboratory which was moved over from Showalter Hall, the usual language laboratory of the past 20 years, still usable but without the flexibility of the new system.

Tape storage, repair and recording may all be carried on in the central area between the labs.



Patterson Hall from Northwest View



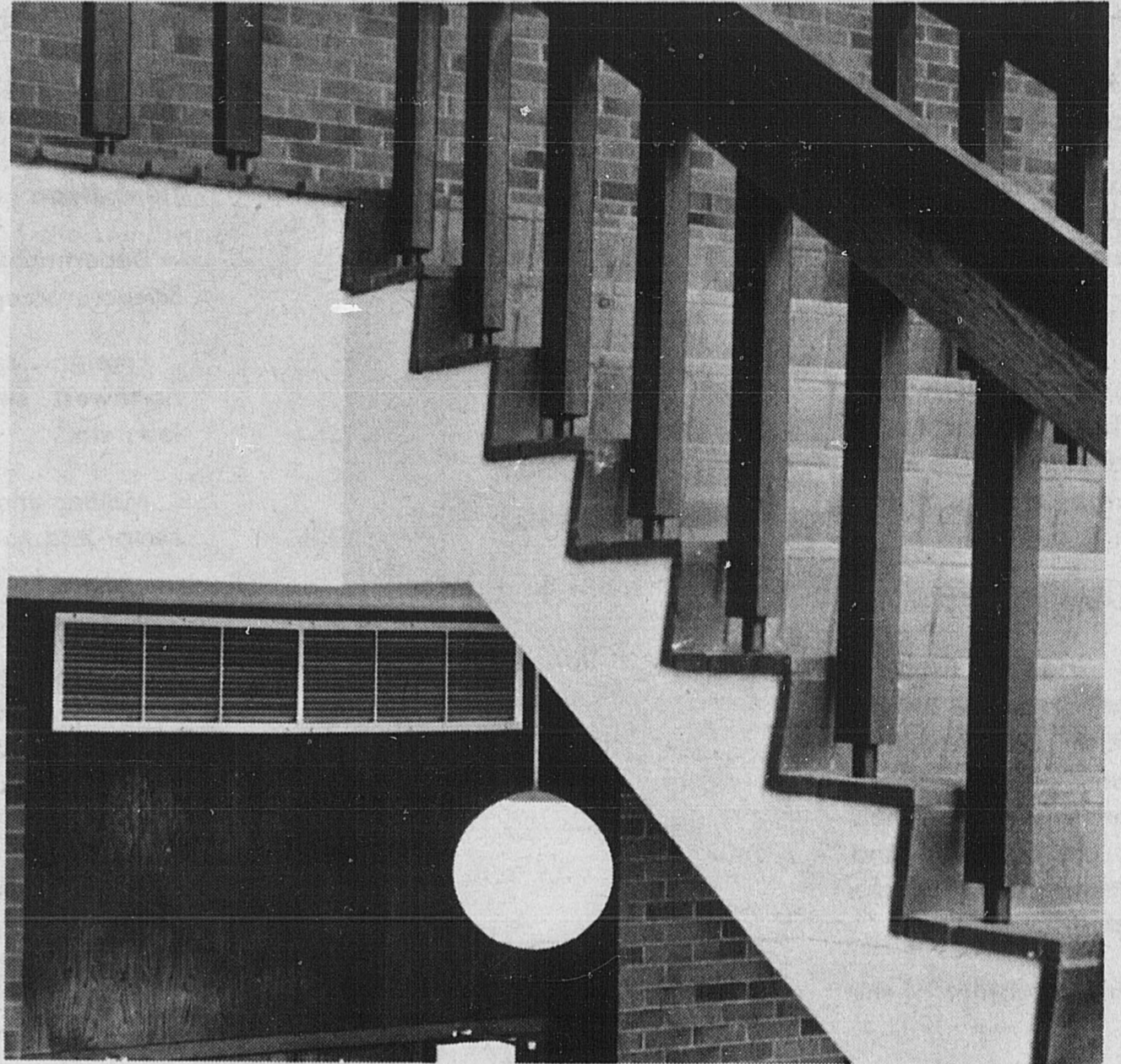
Patterson Hall from Southwest View

# Patterson Hall--Modern Beauty

Verticals of Precast Concrete Pilasters



*Inside looking out shows rampways.*



*Open stairwell enhances open areas.*



*A favorite spot for students in this area directly across from Patterson at the Student Union.*



*A balcony rail serves as study area.*



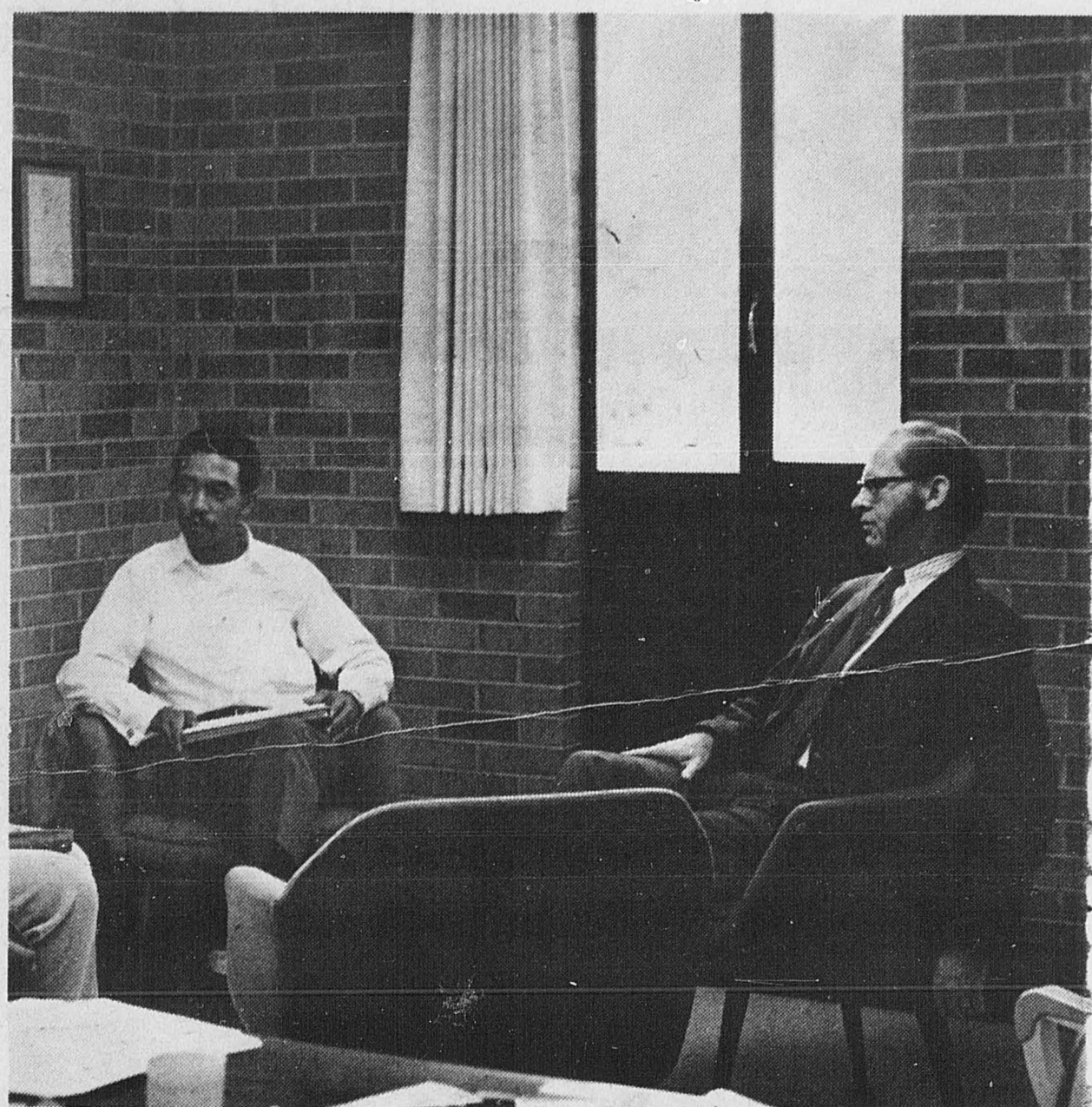
*Interior Patterson halls are striking.*

# Classrooms--Offices

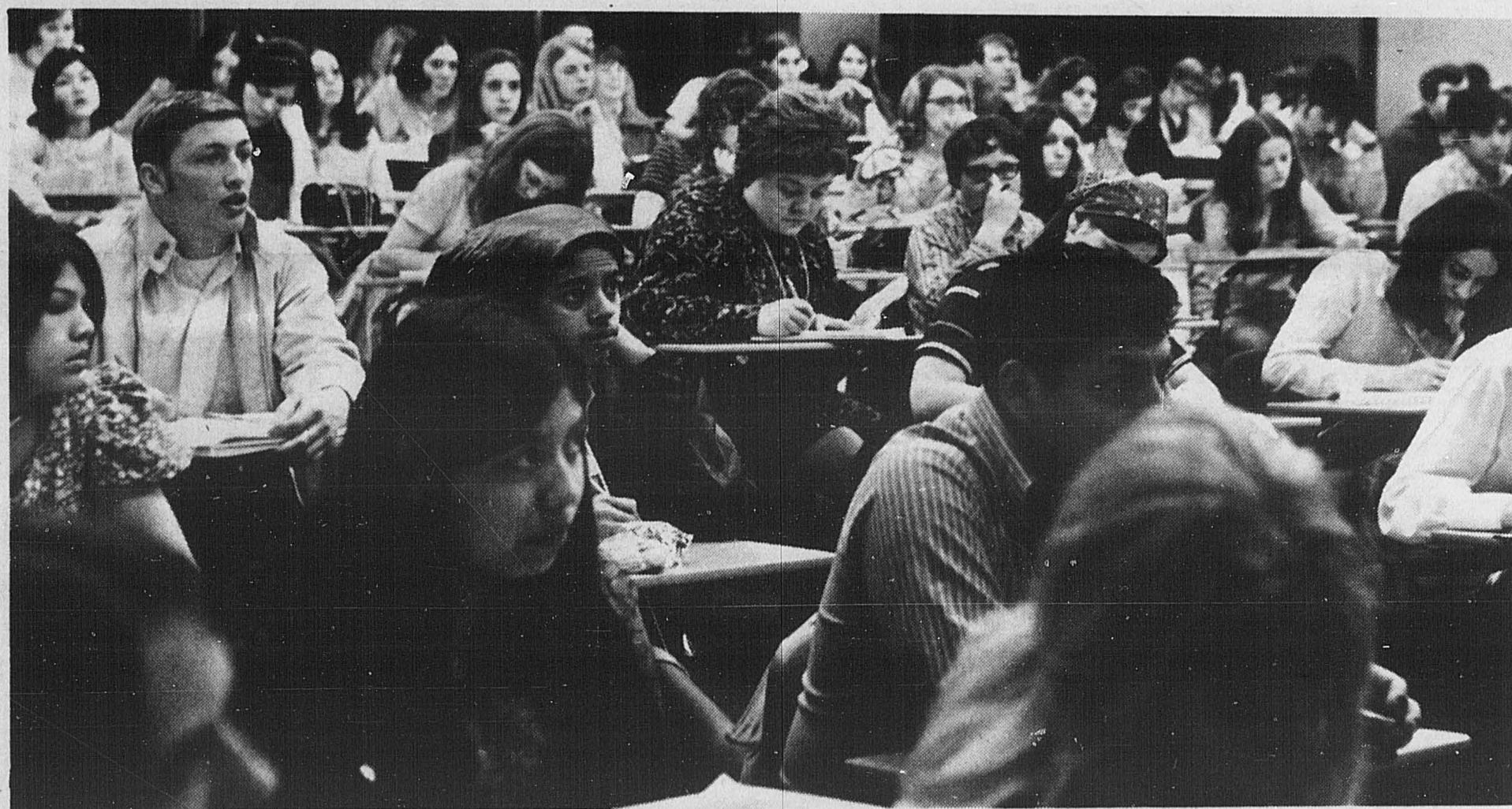
English-Humanities-Foreign Languages-Mathematics-History and Social Science Depts



*Large offices are well lighted.*



*Conference rooms are plentiful.*



*Large classrooms are available at various areas in the building.*



*Foreign language center facilities.*



*Study and relaxation abound everywhere.*

**Vern Johnson  
& Sons**

General Contractors  
N. 601 Cedar Spokane, Wash.

**Gale Mechanical  
Contractor**

Mechanical Contractor  
S. 211 Washington Spokane, Wash.

**Power City Electric**

Electric Contractor  
E. 202 Trent Spokane, Wash.

**Johnson Masonry, Inc**

Masonry Contractor  
N. 502 Glenn Spokane, Wash.

**Thermo Guard**

Insulation Contractor  
E. 8207 Trent Spokane, Wash.

**Spokane Roofing**

Roofing Contractor  
E. 130 Sprague Spokane, Wash.

**Artistic Iron Works**

Structural Steel  
E. 23 Montgomery Spokane, Wash.

**H. Halvorson,  
Inc.**

General Contractors  
N. 4407 Division, Spokane, Wash.

**Gale Mechanical  
Contractor**

Mechanical Contractor  
S. 211 Washington Spokane, Wash.

**Power City Electric**

Electrical Contractor  
E. 202 Trent Spokane, Wash.

**United Paving Company**

Driveways & Parking Contractor  
N. 3430 Cook Spokane, Wash.

**Kruger Sheet Metal**

Heating & Air Conditioning Contractor  
N. 731 Superior Spokane, Wash.

**Northwest Flooring Covering**

Floor Covering Contractor  
W. 517 Indiana Spokane, Wash.

**L. Leffer Masonry, Inc.**

Masonry Contractor  
N. 2903 Madelia Spokane, Wash.