

1-1-2001

# Contemporary Issues in Feminist Research lecture series flyer, 2001

Eastern Washington University. Women's Center

Follow this and additional works at: [http://dc.ewu.edu/wage\\_center](http://dc.ewu.edu/wage_center)

---

## Recommended Citation

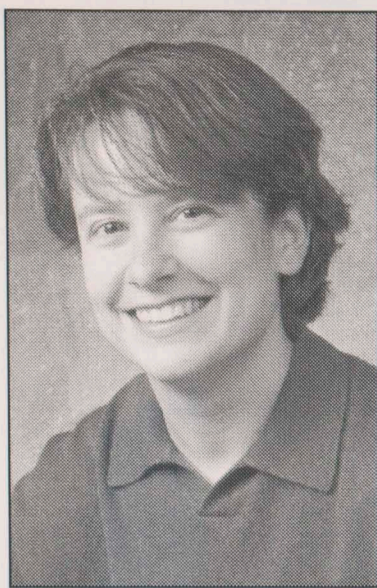
Eastern Washington University. Women's Center, "Contemporary Issues in Feminist Research lecture series flyer, 2001" (2001). *Women's and Gender Education Center Publications*. 85. [http://dc.ewu.edu/wage\\_center/85](http://dc.ewu.edu/wage_center/85)

This Article is brought to you for free and open access by EWU Digital Commons. It has been accepted for inclusion in Women's and Gender Education Center Publications by an authorized administrator of EWU Digital Commons. For more information, please contact [jotto@ewu.edu](mailto:jotto@ewu.edu).

EWU WOMEN'S STUDIES PROGRAMS PRESENTS FOR FALL 2001

# CONTEMPORARY ISSUES IN FEMINIST RESEARCH

*A series which features faculty presenting research in their disciplines from a feminist perspective*



*Tuesday, October 16  
12-1 pm 207 Monroe*

---

**DR. LISA AVERY**

---

*Assistant Professor  
School of Social Work*

■ **Intergenerational  
Rates of Family  
Violence: A Feminist  
Perspective**

*The increased research emphasis on family violence has yielded interesting findings related to abuse of women and children, suggesting relationships between sexual abuse in parents and children, and between partner violence and child abuse. Dr. Avery will describe two recent studies investigating these variables, using a feminist perspective to discuss research in this important field.*



*Wednesday, October 24  
12-1 pm 207 Monroe*

---

**DR. DIANE DAVIS**

---

*Associate Professor  
School of Social Work*

■ **Women Who Took  
Their Lives Back from  
Compulsive Gambling**

*This presentation covers the results of the "Women Who Took Their Lives Back From Compulsive Gambling" online survey that was launched in July, 2000. The analysis will include approximately 200 women who responded to the 79-item qualitative and quantitative questions, and will discuss demographics, family history, gambling activities, consequences, and recovery patterns.*

---

EASTERN WASHINGTON UNIVERSITY