

9-1-1961

## Eastern Washington State College football press guide, 1961

Eastern Washington College of Education. Associated Students

Follow this and additional works at: [https://dc.ewu.edu/football\\_programs](https://dc.ewu.edu/football_programs)

---

### Recommended Citation

Eastern Washington College of Education. Associated Students, "Eastern Washington State College football press guide, 1961" (1961). *EWU Football Programs*. 55.  
[https://dc.ewu.edu/football\\_programs/55](https://dc.ewu.edu/football_programs/55)

This Book is brought to you for free and open access by the Eastern Washington University Digital History Collections at EWU Digital Commons. It has been accepted for inclusion in EWU Football Programs by an authorized administrator of EWU Digital Commons. For more information, please contact [jotto@ewu.edu](mailto:jotto@ewu.edu).

**1961**

**Eastern  
Washington  
State  
College  
'Savages'**

**FOOTBALL**

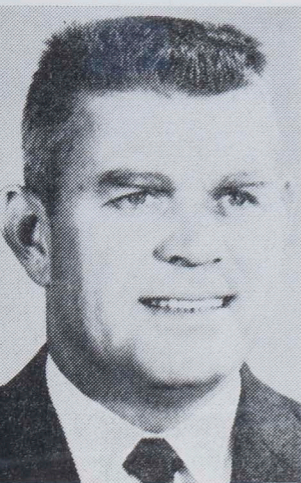
**Information**

## Athletic Director



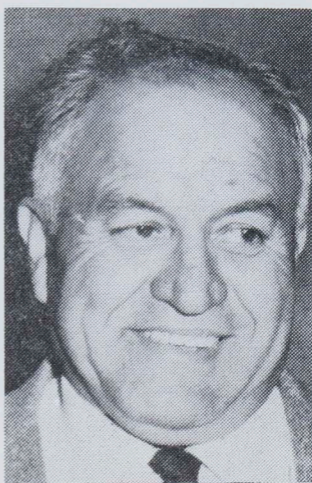
W. B. (Red) Reese

## Head Coach



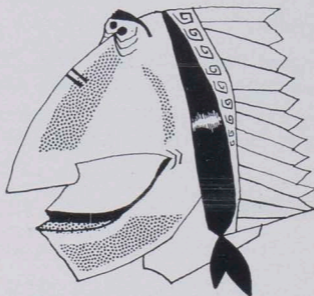
Ed. Chissus

## Assistant Coach



Al Hoptowit

**Eastern Washington  
State College  
Cheney, Washington  
FOOTBALL PRESS BOOK**



Team Name: Savages  
Colors: Red and White  
Home Field: Woodward Stadium  
Conference: Evergreen

**Telephones**

Director of Athletics .... W. B. (Red) Reese  
Home phone ..... BE 5-4730  
Office phone ..... BE 5-6221  
ext. 250

Head Football Coach ..... Ed Chissus  
Home phone ..... BE 5-6360  
Office phone ..... BE 5-6221  
ext. 250

Director of Publicity ..... H. R. Koslowsky  
Home phone ..... Spokane, KE 4-9509  
Office phone ..... BE 5-6221  
ext. 219

## AREA PUBLICITY OUTLETS

### Daily Newspapers

The Spokesman-Review, Spokane; Harry Missildine, sports editor; Danny May, sports writer; MA 4-3321.

The Spokane Daily Chronicle, Spokane; Bob Johnson, sports editor; Jim Spoerhase, sports writer; MA 4-1121.

### Wire Services

Associated Press, Chronicle Bldg., Spokane, Ken Jackson, bureau chief, MA 4-2632.

United Press International, W. 315 Sprague, Spokane, Bobbie Ulrich, bureau chief, RI 7-6442.

### Local Weeklies

Cheney Free Press, Guyel Frost, publisher, BE 5-6513.

The Easterner, EWSC, BE 5-6221, ext. 204.

### Radio Stations

KCFA, S408 Freya, Spokane, KE 5-3077.

KGA, S6228 Regal, Spokane, KE 4-0631.

KHQ, S4102 Regal, Spokane, MA 4-5131.

KLYK, W242 Riverside, Spokane, RI 7-9033.

KNEW, 57th & Helena, Spokane, KE 4-9363.

KPEG, W527 2nd, Spokane, MA 4-0454.

KREM, S4103 Regal, Spokane, KE 4-0423.

KXLY, W315 Sprague, Spokane, MA 4-1218.

KZUN, S23 Pines, Opportunity, WA 4-2400.

KEWC, EWSC, Cheney, Wn., BE 5-6221.  
ext. 227

### Television Stations

KHQ-TV, S4102 Regal, Spokane, MA 4-5131

KREM-TV, S4103 Regal, Spokane, KE 4-0423

KXLY-TV, W315 Sprague, Spokane, MA 4-4281

## 1961 Football Schedule

- Sept. 23—Humboldt State  
Arcata, Calif., 8 p. m.
- Sept. 30—University of Puget Sound (\*)  
Cheney, 8 p. m.
- Oct. 7—Central Washington (\*)  
Ellensburg, 1:30 p. m.
- Oct. 14—Western Washington (\*)  
Cheney, 8 p. m.
- Oct. 21—Whitworth (\*) H  
Cheney, 1:30 p. m.
- Oct. 28—Pacific Lutheran (\*)  
Cheney, 8 p. m.
- Nov. 4—University of Puget Sound (\*)  
Tacoma, 1:30 p. m.
- Nov. 11—Central Washington (\*)  
Cheney, 1:30 p. m.
- Nov. 18—College of Idaho  
Cheney, 1:30 p. m.
- (\*) Evergreen Conference games  
H-Homecoming

## 1960 Football Standings

### Evergreen Conference

	won	lost	tied
Whitworth College	7	0	0
Central Washington State	4	3	0
University of Puget Sound	4	3	0
Eastern Washington State	2	5	0
Pacific Lutheran University	2	5	0
Western Washington State	2	5	0

## 1960 Football Results

- Eastern 6 College of Idaho 12
- Eastern 6 Humboldt State 25
- Eastern 13 Whitworth 40
- Eastern 13 Pacific Lutheran 12
- Eastern 0 University of Puget Sound 35
- Eastern 6 Central Washington 41
- Eastern 7 Western Washington 13
- Eastern 14 Whitworth 33
- Eastern 14 Pacific Lutheran 13
- Total: Won 2, Lost 7, Tied 0  
(Fourth place in Evergreen Conference)

## EWSC Record, 1961 Opponents

	EW W	EW L	Td.	Date of 1st Com.
Humboldt State	0	1		1960
U. of Puget Sound	5	9	2	1939
Central Wash. State	17	16	3	1922
Western Wash. State	23	12		1923
Whitworth College	24	13		1923
Pacific Lutheran U.	13	8	1	1937
College of Idaho	2	5		1924

### Ed Chissus – Head Coach

This year begins genial Ed's ninth year as head football coach at his Alma Mater, where he starred as an end for several years.

Before coming to Eastern, Ed was a highly successful football coach in the Yakima Valley, where his high school teams won 55, lost 22 and tied two in seven years. In each of the seven years, his teams won or tied for the Yakima Valley championship.

Traditionally using the split-T offense, his team this year will add the winged-T with variations for a more wide open and varied attack.

### Al Hoptowit – Assistant

Out of football retirement, Al Hoptowit, former Washington State University great and a nine-year professional football veteran, joins the EWSC staff as assistant coach this year.

With three years in Canadian pro ball and six years as a guard for the National Football League Chicago Bears, Hoptowit will function mainly as line coach.

### Frank Landon – Student Asst.

A former Montana State University half-back, Frank Landon will act as a graduate student assistant coach this year.

## 1961 PROSPECTS

From an initial turnout of 46 players when the 1961 practice season opened, Chissus has trimmed the Savage squad to 38 players. The first turnout brought 13 lettermen, 4 junior varsity players, 14 transfers and 15 freshmen.

Most of the lettermen strength is in the backfield, and Chissus has had to turn to the transfer students in his efforts to strengthen the line, the weak part of the Savage team.

The Savages have two lettermen at quarterback—senior George Stephens and sophomore Bob Clark. At halfback are lettermen seniors John Bass, Al Johnson and junior Dave Davis, an all-Evergreen conference pick at fullback, who has been moved to the half spot. Senior El Laulainen at fullback is the other letterman in the backfield.

Returning linemen include senior Harley Allen, returning to college after several years in the service, senior Bill Newborne and junior Mike Macaulay, all at end; senior guards Bob Miner, Ted Kuykendall, Paul Lerch and Dave Everitt.

Among transfer students who are likely to see action are halfbacks Jerry Dotson and Joe Bonny and fullback Ken DuCharme.

On the line, Mike Hess, a non-letter winner last year, may get the starting call at center, but two transfers, Dave Scafani and Jerry Schelling, aren't to be counted out.

Elsewhere on the line, ends Daryl Henjum and Glen Crandal, both transfers, are almost certain to see action. At tackle, Bob Stanley, a non-letter winner last year because of injuries, and transfer George Ling are likely starters.

Look for a more wide-open game from the Savages this year as Chissus shifts to the winged-T type of offense.



# PLAYER SKETCHES

## Linemen

**ALLEN, HARLEY, End 6'3", 218, 26, Spokane**

A two-letter end, Allen returned after several years in the service and seems to have stepped right back into his old position. Great if he returns to 1953-54 form.

**BENSON, KEN, End, Halfback, 5'9", 175, 18, Coulee City**

This three-sport letterman frosh from Coulee City looks like a comer. He'll need seasoning, which he'll undoubtedly get in action this year.

**BROWN, DAN, Tackle, 6'3½", 190, 18, Kent**

A freshman, Brown was co-captain of his Federal Way High School team. With his size and weight, he'll get his chances with the Savages this year.

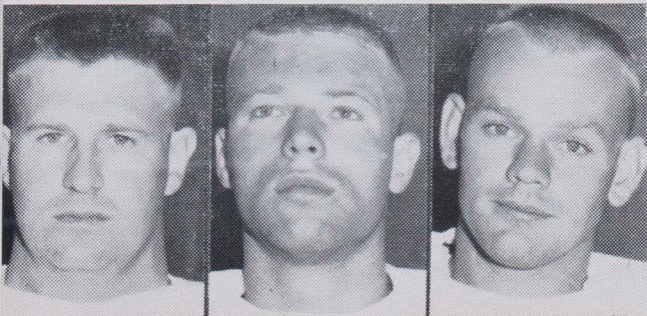
**COX, DON, Guard, 5'10", 170, Soap Lake**

Comes to college with a host of high school awards: captain, all-conference two years, defensive award two years. May get a chance in college play this year.

Allen

Crandal

Everitt

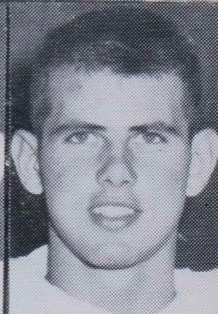




**Bass**



**Bonny**



**Clark**

**CRANDAL, GLEN, End, 5'9½", 165, 21, Spokane.**

This Spokane senior from John Rogers High School comes to EWSC via Columbia Basin College, where he lettered in football and wrestling. Almost sure to see action.

**EVERITT, DAVE, Guard, 5'10½", 210, 22, Pasco.**

This Pasco senior lettered last year. An all-JC pick at Columbia Basin College, he showed terrific blocking and speed last year.

**HATCH, BUZZ, Tackle, 5'10", 204, 23, Seattle.**

This tough young freshman will strengthen the Savage forward wall. Lacks experience, but his age gives him maturity. Will undoubtedly see action.

**HENJUM, DARYL, End, 6'2", 185, 21, Richland.**

A transfer from Columbia Basin College where he played for two years, he's a rugged player making a strong bid for a starting berth.

**HESS, MIKE, Center, 5'10", 200, 19, Longview.**

Saw action last year as a reserve fullback, but moved to center this year where his drive and blocking strength can be used to best advantage.

## Eastern Washington State College Player Roster

Name	Pos.	Ht.	Wt.	Age	Yr.	Letter	Hometown
Allen, Harley	E	6'3"	218	24	Sr.	1	Seattle
Bass, John	B	5'10"	190	26	Sr.	2	Spokane
Benson, Ken	B	5'9"	175	18	Fr.	0	Coulee City
Bonny, Joe	B	5'11½"	185	19	So.	0	Sunnyside
Brooks, Elmore	Q	5'9"	140	17	Fr.	0	Emmett, Ida.
Brown, Dan	T	6'3½"	190	18	Fr.	0	Kent
Clark, Bob	Q	5'10"	160	19	So.	1	Seattle
Cox, Don	G	5'10"	170	18	Fr.	0	Soap Lake
Crandal, Glen	E	5'9½"	165	21	Jr.	0	Spokane
Davis, David	B	5'8"	180	20	Jr.	2	Otis Orchards
Dotson, Jerry	B	5'10"	185	22	Sr.	0	Bremerton
DuCharme, Ken	FB	5'11"	185	24	Jr.	0	Polson, Mont.
Everitt, Dave	G	5'10½"	210	22	Sr.	1	Pasco
Gragg, Larry	B	5'9½"	170	18	Fr.	0	Spokane
Hatch, Buzz	T	5'10"	204	23	Fr.	0	Seattle
Henjum, Daryl	E	6'2"	185	21	Jr.	0	Richland
Hess, Mike	C	5'10"	200	19	So.	0	Longview
Johnson, Al	B	5'8"	187	21	Sr.	1	Springdale
Jungblom, Charles	Q	6'	170	20	So.	0	Lind
Kuykendall, Ted	G	6'	189	23	Sr.	1	Richland
Laulainen, Ed	FB	5'6"	180	24	Sr.	1	Longview
Lerch, Paul	G	5'11"	170	20	Sr.	2	Spokane
Ling, George	T	6'2"	220	21	Sr.	0	Pasco
Macaulay, Mike	E	5'11"	183	20	Jr.	2	Burnaby, B. C.
McNearney, Jerry	G	5'8"	155	24	Fr.	0	Newport
Miner, Robert	G	5'6"	165	26	Sr.	3	Spokane
Mitsui, Jim	G	5'10"	175	21	Jr.	0	Odessa
Morgan, Doug	Q	5'9"	170	18	So.	0	Plaza
Myers, Don	E	6'	175	18	Fr.	0	Deer Park
Newborne, Bill	E	6'1"	195	21	Sr.	1	Portland, Ore
Scafani, Dave	C	5'10"	200	19	So.	0	Fremont, Calif.
Schelling, Jerry	C	5'11"	190	20	Jr.	0	Spokane
Snoddy, Herman	B	5'7½"	150	18	Fr.	0	Seattle
Stanley, Robert	T	6'3"	220	26	Sr.	0	Bremerton
Stephens, George	Q	6'	160	21	Sr.	1	Richland
Thill, Ed	E	6'1"	183	21	Sr.	0	Colville
Todd, Rolland	FB	5'11"	205	24	Jr.	0	Monitor
Vradenburg, Keith	G	5'10"	175	19	So.	0	Entiat

**KUYKENDALL, TED, Guard, 6', 189, 23, Richland.**

A top-notch lineman, blocks well, tackles hard and goes all-out on all plays. A starter last year, he'll start again this year.

**LERCH, PAUL, Guard, 5'11", 170, 20, Spokane.**

Despite his size, this two-year guard has tremendous speed and desire. May not start, but he's too good to be kept out for very long.

**LING, GEORGE, Tackle, 6'2", 220, 21, Pasco.**

Named the most inspirational player at Columbia Basin College, Ling will be counted on to bolster the Savage line with his 220 pounds.

**MACAULAY, MIKE, End, 5'11", 183, 20, Burnaby, B. C.**

Starting quarterback as a freshman, Macaulay was moved to end last year where he did an excellent job. He'll be at the same position this year.

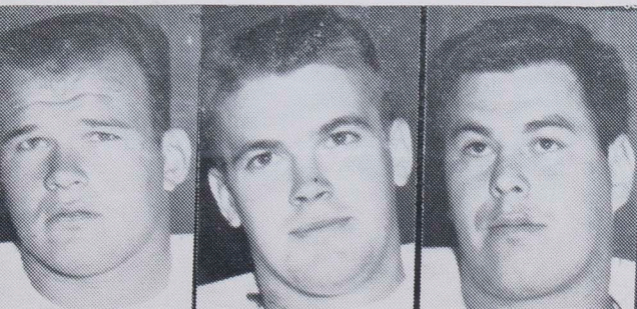
**McNEARNEY, JERRY, Guard, 5'8", 155, 24, Newport.**

Although a freshman, McNearney has the maturity to move up. He makes up for his size by his determined effort, and shows good ability.

Davis

Dotson

DuCharme





**Hatch**



**Henjum**



**Hess**

**MINER, ROBERT, Guard, 5'6", 165, 26, Spokane.**

Only three-year letterman on the Savage squad. Pound for pound, one of the toughest players in conference, and will get a chance to prove it again this year.

**MITSUI, JIM, Guard, 5'10", 175, 21, Odessa.**

A four-sport letterman at Odessa High School, Mitsui is a transfer without college football experience, but has looked exceptionally good in practice.

**MYERS, DON, End, 6', 175, 18, Deer Park.**

Another freshman, Myers was football captain at Deer Park High School, and won numerous awards. Shows definite promise but needs experience in college ball.

**NEWBORNE, BILL, End, 6'1", 195, 21, Portland, Ore.**

Terrific speed and good hands, Newborne is an offensive threat on all passes. A starter last year, he looks almost certain to be again this year.

**SCAFANI, DAVE, Guard, 5'10", 200, 19, Fremont, Calif.**

A transfer from Menlo College in California, Scafani has shown he can stand up with the best. An all-around athlete, he plays soccer and baseball, too.

**SCHELLING, JERRY, Center, 5'11', 190, 20, Spokane.**

An all-city second team tackle at Spokane's John Rogers High School, Schelling comes to EWSC via Columbia Basin College. Due to see plenty of action.

**STANLEY, ROBERT, Tackle, 6'3", 220, 26, Bremerton.**

A transfer from Olympic Junior College, Stanley was kept out of play last year by an injury. With his weight, he's sure to find a place on the line.

**THILL, ED, End, 6'1", 183, 21 Colville.**

This senior end didn't turn out last year, but with added maturity is almost sure to get into play this year.

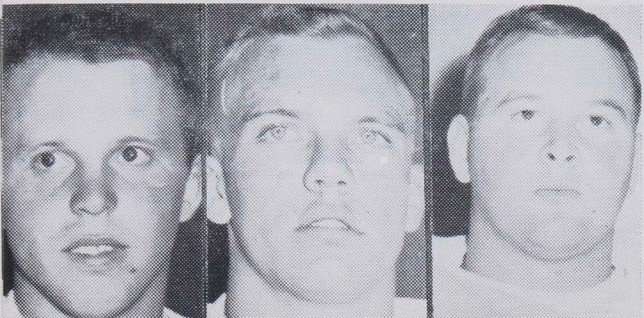
**VRADENBURG, KEITH, End, 5'10", 175, 19, Entiat.**

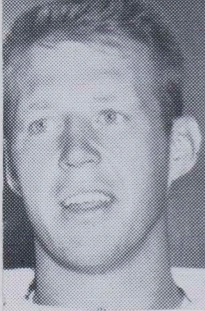
Vradenburg comes to Eastern from Seattle Pacific. A four-sport letterman in high school, he has the know-how to play college ball and play it well.

Johnson

Jungblom

Laulainen





**Lerch**



**Ling**



**Kuykendall**

## **Backs**

**BASS, JOHN, Back, 5'10", 190, 24, Seattle.**

Fine runner and pass receiver, Bass came to EWSC last year via Washington State College and Wenatchee Valley College. A starter last year, he'll make it again.

**BONNY, JOE, Back, 5'11½", 185, 19, Sunnyside.**

A transfer from the University of Oregon, Bonny was an all-around athlete in the Yakima Valley conference. He'll get the chance to live up to his reputation.

**BROOKS, ELMORE, Quarterback, 5'9", 140, 17, Emmett, Ida.**

A three-sport letterman in high school Brooks, a freshman, looks good but may be a year away from Evergreen conference play.

**CLARK, BOB, Quarterback, 5'10", 160, 19, Seattle.**

Came through when called on last year, although only a freshman. Throws well, thinks ahead. With added experience, will see more action.

**DAVIS, DAVID, Back, 5'8", 180, 20, Otis Orchards.**

An all-Evergreen conference fullback, Davis has been moved to halfback to give the Savages more backfield power. Hits and blocks hard, plays well both ways.

**DOTSON, JERRY, Back, 5'10", 185, 22, Bremerton.**

This Bremerton boy comes to EWSC via Montana State University. A senior, he's experienced and fast, and is expected to add a real punch to the Savage offense.

**DUCHARME, KEN, Fullback, 5'11", 225, 24, Polson, Mont.**

A transfer via Montana State University and Wenatchee Valley College, this husky fullback has sparkled in practice, especially on defense. Will see action.

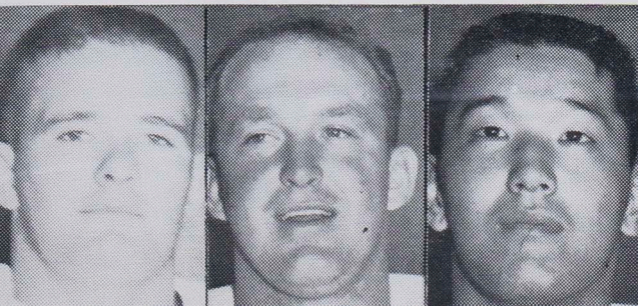
**GRAGG, LARRY, Back, 5'9½", 170, 18, Spokane.**

Pre-season action shows he deserves his "Mr. Hustler" title from Ione High School. This all-around athlete, a freshman, has definite promise.

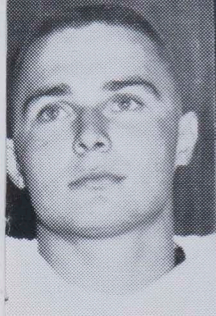
**Macaulay**

**Miner**

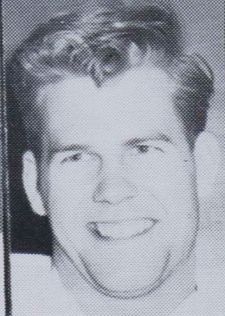
**Mitsui**



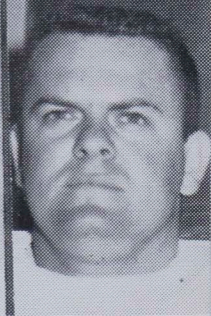




**Morgan**



**Stephens**



**Todd**

**JOHNSON, AL, Back, 5'8", 187, 21, Springdale.**

Another of last year's lettermen, he'll see plenty of action this year. Best on the defense, he's shown he can run with the ball, too.

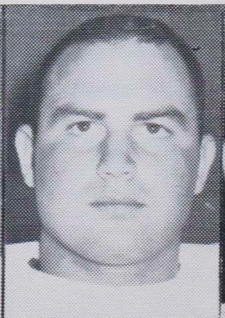
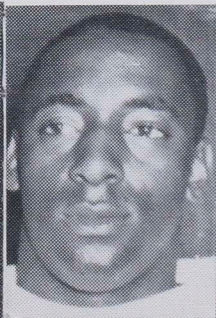
**JUNGBLOM, CHARLES, Quarterback, 6', 170, 20, Lind.**

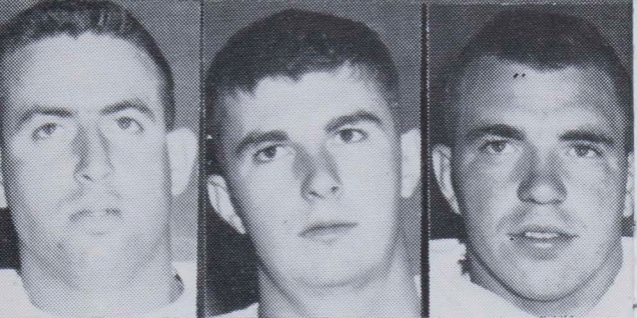
A transfer from Centralia College, Jungblom was a four-sports letterman in high school. Has ine potential as quarterback.

**Newborne**

**Scafani**

**Schelling**





**Stanley**

**Thill**

**Vradenburg**

**LAULAINEN, ED, Fullback, 5'6", 180, 24, Longview.**

Known as "Stub" to his teammates, a pile-driver in action who hits hard and likes contact. Sure to be a starter.

**MORGAN, DOUG, Quarterback, 5'9", 170, 18, Plaza.**

This sophomore, up from the junior varsity, is one of several fine quarterbacks on the EWSC squad who needs seasoning.

**SNODDY, HERMAN, Back, 5'7", 150, 18, Seattle.**

This little freshman back from Garfield High School in Seattle has lots of potential.

**STEPHENS, GEORGE, Quarterback, 6', 160, 21, Richland.**

Stephens was Eastern's starting quarterback last year after a sensational two years at Columbia Basin College. Undoubtedly will get the starting call this year.

**TODD, ROLLAND, Fullback, 5'11", 205, 24, Monitor.**

An all-conference pick at Cashmere High School, where he lettered in three sports, Todd comes to EWSC from Wenatchee Valley College with two grid letters.



## **HOME GAMES**

**Sept. 30**

**University of Puget Sound**

**Oct. 14**

**Western Washington State**

**Oct. 21**

**Whitworth College**

**Homecoming**

**Oct. 28**

**Pacific Lutheran University**

**Nov. 11**

**Central Washington State**

**Nov. 18**

**College of Idaho**

---

## **GAMES AWAY**

**Sept. 23**

**Humboldt State**

**Oct. 7**

**Central Washington State**

**Nov. 4**

**University of Puget Sound**