

3-13-1936

## M.W.A.K. Columbian, Vol. 2, No. 11

Mason-Walsh-Atkinson-Kier Co.

Follow this and additional works at: [http://dc.ewu.edu/mwak\\_columbian](http://dc.ewu.edu/mwak_columbian)

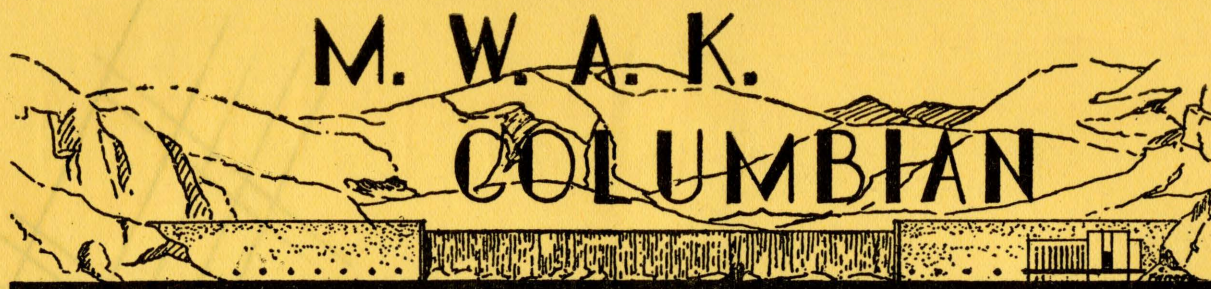
---

### Recommended Citation

Mason-Walsh-Atkinson-Kier Co., "M.W.A.K. Columbian, Vol. 2, No. 11" (1936). *Columbian (Grand Coulee Dam newsletter)*. 164.  
[http://dc.ewu.edu/mwak\\_columbian/164](http://dc.ewu.edu/mwak_columbian/164)

This Book is brought to you for free and open access by the University Archives & Special Collections at EWU Digital Commons. It has been accepted for inclusion in Columbian (Grand Coulee Dam newsletter) by an authorized administrator of EWU Digital Commons. For more information, please contact [jotto@ewu.edu](mailto:jotto@ewu.edu).





SAFETY  
DEPARTMENT

MASON-WALSH-ATKINSON-KIER CO.  
BUILDERS OF COULEE DAM

MASON CITY  
WASHINGTON

Vol. 2 No. 11

M. Pete Shrauger--Editor  
Safety Engineer

March 13, 1936

### TIME DEPARTMENT

There are a "million" ways of timekeeping for a "million" different jobs, but the general requirements are usually the same. Methods of timekeeping should always be fast and accurate, but exactly how a right method should be selected quite often is determined by the physical requirements of a job. That is the condition here.

Because of the immense size of the project and with both sides of the river acting as the scenes for major operations at the same time, two sub-time offices are in use. This setup is not followed very often on other jobs, perhaps because their physical arrangements are smaller.

At the Grand Coulee dam, too, is the rare instance of a man helping to keep his own time--unusual as far as other projects are concerned and especially rare because of the size of the project here.

The practice of a man's helping to keep his own time and the establishment of two sub-time offices work hand in hand not only to facilitate timekeeping but also to help the workman.

To the layman timekeeping is chiefly a matter of jotting down when a man goes to work, when he returns, and the amount of wages for the day or week. But behind the scenes there is more than that.

Timekeeping has accounted for the issuance of 347,624 checks for 7,023,816 man hours or a total payroll of \$6,211,157.61. These figures are through March 3. The checks represent all those issued on the double-check system.

The bringing about of such totals explains timekeeping in two divisions: one of individual payroll concern, the other the cost for a division of labor. The basic procedure for deriving such costs lies with the issuance of a numbered brass to each workman, thereby permitting timekeeping through consecutive numerical arrangement.

As a workman proceeds to work he calls for his flat brass at either the east or west time offices, depending upon whether his work is generally listed as east or west side work. The particular numbered brass is issued him (Continued on Page 5)







LINDMAN



## JOHN A. KIER

John A. Kier, head timekeeper for the Mason-Walsh-Atkinson-Kier company, for two years attended a prep school, the New Mexico Military institute, a cavalry school, before his two years at the University of Oregon, at Eugene. A transfer to Stanford University at Palo Alto, California, and two years of study brought graduation and a bachelor of arts degree in economics in 1931.

During summer vacations and at all other times possible John Kier concerned himself with construction work. He obtained valuable experience during these earlier years on the Coolidge dam, in Arizona.

Following receipt of his degree he became associated with the W. E. Kier Construction company at San Diego, and then with the Guy F. Atkinson company on the Bon-neville dam. His connection with the Mason-Walsh-Atkin-son-Kier company began Aug. 23, 1934, during the days before active construction work on the dam and at a time when Company offices were in Spokane. John Kier took charge of timekeeping on the scene here Oct. 1, 1934.





Jack Tar had just arrived at the old home cottage after voyaging about for a number of years. "Well, mother," he said heartily, "how did you like the parrot I sent you?"

"Well," said his old mother dubiously, "it was nice and plump, Jack, but, my! how tough!"

-oOo-

"I have spent nearly \$20,000 on that girl's education," complained the ag-grieved father, "and here she goes and married a young feller with an income of only \$1,000 a year."

"Well," said the friend of the family, "that's 5 per cent on your investment, is it not? What more can you expect in these times?"

-oOo-

"Do you believe in clubs for women?"  
"Yes, if technique fails."

-oOo-

WANTED--MORE PEOPLE WHO WILL PRACTICE  
BEING CAREFUL!!

-oOo-

Cat driver: "How did you lose your teeth, son?"

Son: "Shifting gears on a lollypop."

-oOo-

The only animal that has four legs, eats oats, has a tail, and sees equally well from both ends is a blind horse.

-oOo-

Smith: "Why, old man, I thought you were dead."

Jones: "What led you to think that?"

Smith: "I overheard some people on the street speaking well of you."

-oOo-

Boss (to office boy arriving a half hour late): "You should have been here at eight o'clock."

Office boy: "Why, what happened?"

-oOo-

Sailor: "Ye ain't sick, are ye?"

Passenger: "No-o, but I hate to yawn."

Johnson: "And what have you decided to call the new baby?"

Sampson: "Edison."

Johnson: "Edison! And do you think he shows some of the characteristics of the great inventor, and that's the reason you chose the name?"

Sampson: "Well, Edison said four hours sleep is enough for any man."

-oOo-

An old colored mammy Charles Lindbergh once took up for an air ride said when they returned to earth, "Thank yo', Mistah Lindbergh, fo' dem two rides."

"Two rides?" said Charles. "But you had only one."

"No, suh, two," was the reply. "Ma fust and mah last."

-oOo-

Jury service is one of the simplest things in the world. You merely listen to both sides of the story and then vote against the lawyer you don't like.

-oOo-

Scotchman: "I want to hire a horse."

Attendant: "Do you want him long?"

Scotchman: "Yes, there'll be eight of us."

-oOo-

If you're tuned in to the proper mood, writes #228, you'll sure grab off a lot of funny ones around here. For instance,

Hearing a radio, on my way to the mess hall during the recent baseball series, I accosted a bullcock and asked, "How's the world series coming out, dad?"

"Can't tell much about it yet," he replied, "but it appears to me like they was a-goin' to be a helluva war over there."

-oOo-

YOU HAVEN'T GOT NINE LIVES

-oOo-

He: "Pardon me, dear, but your stockings seem rather wrinkled."

She: "You brute! I have no stockings on."



TIME DEPARTMENT

(Continued from Page 1)

from a numerical arrangement of nails resembling a cribbage board completely pegged. When the workman returns from work he drops his flat brass into one of nine slots, numbered as to hours of work from one to eight and with one slot for "no work," in case the brass was called for and not used. In this way a man records his own time.

When the brass was first called for at the beginning of a shift, a timekeeper can glance at the nails without brass and quickly post the number of each man at work on a five-column sheet. Such numbers are also recorded on a white individual sheet and also on a small field sheet for a loose-leaf book. The latter is carried by a field checker as he contacts every man on the job to assure himself that the man actually appeared on the job. The checker also records on the field sheet the name of the foreman for every workman. On his tour of the job, from either the east or west side office, the checker is interested in the exceptions. That is, if the numbers of the men at work agree exactly with the numbers in his book, then his work is simple. If he finds numbers in the field not recorded in his book, or vice versa, then investigation must follow.

Quite often men may be sent across the river on a particular mission, the west side, for instance. The east side checker will find the numbers missing when he checks against the issuance of brass. The west side checker, however, will find the numbers added to his list. Because he has no such numbers on his first field sheet, he will call the east side office and report the missing numbers for the east side.

But checking does not conclude here. On the job the foreman has a card on which he lists each man, as to brass number, hours, rate of pay, and particular kind of work. If a man has shifted work during the day, a record is made on the foreman's report as to the number of hours of work on the particular job.

After the foreman turns in his report,

the timekeeper turns back to the five-column sheet and records the labor time for each workman. He checks this statement of time against the workman's statement of time when he turns in his brass. In practically all instances the two agree. When they do not, the workman's decision as to his own time is listed in red pencil alongside that of his foreman and a checkup follows.

If a workman is regular in calling for his brass, of turning it in, and can always be found on the job, the possibility of their being a mistake as to his gross check is decidedly unlikely.

The information from the foreman's card is also recorded on the workman's individual sheet on which is listed the distribution, that is the exact location and kind of work. The individual sheet, also containing the number of hours worked and the pay rate, serves the second purpose of time keeping. This is the determination of the wage cost for each division of work which finds recording on the daily labor report in the central time office.

For this work, symbolism becomes important. More than 110 divisions of work are referred to by key symbols in order to facilitate computation. Thus the letter "E" signifies erection work; "A" east side; "B" west side. Numbers associated with the letters further limit the work until the exact nature and location of such work is known. Thus ELOB signifies the erection of the main dam trestle tracks and deck on the west side. Through the recording of the number of men, their rate of pay, and their scene of operations, the labor cost for a particular work is determined.

The complete cost of a particular division is arrived at in the accounting department by the submission of labor costs from the time office and equipment costs from the purchasing department.

Deductions on checks are not determined at the time offices. They are submitted to the main time office from other departments and are merely recorded on from 70 to 90 payroll sheets.



Yes, Chief, the Windows were  
ALL - Broken when we got  
here!!!





LAUGH ONCE TOO OFTEN

There is an unfortunate tendency to make light of the danger of electrical shock from equipment operated at low voltage. However, there have been many well-authenticated cases of death caused by electrical currents of approximately 110 volts. The hazard is especially great if a person receives a shock while he is perspiring freely, or if he touches a conductor with a wet hand, or if he stands on moist ground or on a metal surface and comes in contact with a charged object.

It is highly important, therefore, to make all electrical equipment as safe as possible by insulation and grounding, and for operators of such equipment to take all known personal precautions to avoid electric shocks.

Short circuits occurring in connection with electrical equipment may cause fires. Inflammable and explosive vapors are often present in locations where portable electrical equipment is used and they may be ignited by sparks or arcs from motors or switches. The use of equipment that is constantly maintained in good condition will also materially reduce the numerous hazards.

-oOo-

Figures released last Friday for the preceding week of work showed an employment increase for the MWAK of 354 over the previous week as 2959 were employed. Mason City concerns added 140 to the list. The USBR had 427.

-oOo-

FIRST-AID CLASSES WILL BE HELD IN THE NORTH WING OF THE MESS HALL NEXT WEEK.

START ATTACK ON BERME

On Monday the 4-yard shovel resting at the north end of bay 40 will dig into the 250,000 yards resting against the west side of block 40. The material will take its long ride to Rattlesnake canyon up the lone conveyor lateral.

The first of the main trusses at block 40 was removed Wednesday at 40-G and G

was poured up to level 925 Thursday, only 10 feet from the top of the steel piling enclosing the block. G is now 55 feet high. C and E are close behind.

o-

The committee for the I.O.O.F. will give a dance in the Company mess hall Friday night, March 13.

o-

A little concrete dam on the east side looks out from the bedrock canyon. It is about 35 feet long at the top with an over-all height of about 22, and supports first timbering cribbing to hold back the south slope from possibly sliding into the hole. The crib will permit rock work in the hole.

o-

FEBRUARY ACCIDENT FIGURES

Compensable accidents.....26  
Fatal accidents.....0

In general, the accident report for the month of February is an improvement. If workmen will give the warmer weather a little cooperation, March also will be an improvement.

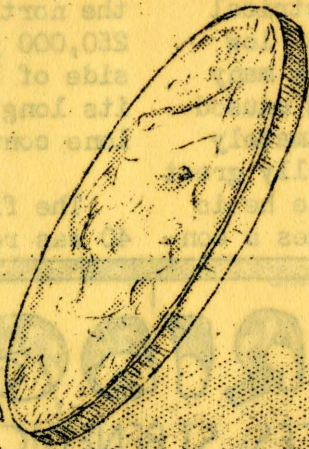
-oOo-

Mason City high school came from behind in its last game of the season to take Nespelem away from home Tuesday night by a score of 27 to 25. This was the last game scheduled by teams at the dam site.





WHAT WILL  
A BUY  
DOLLAR NOW



VALUE BEYOND  
COMPARISON

DOLLAR DAY  
SALE

FRIDAY

SATURDAY

COULEE TRDG



# CHURCH

**COMMUNITY CHURCH**—The Rev. W. W. Sloan, pastor

Services for Sunday, March 15:

- 9:45 a.m. Sunday School.  
 11:00 a.m. Morning Worship, subject, "Inner Satisfaction of Christian Living."  
 7:00 p.m. Young people's meeting, seventh and eight graders, subject, "Manners."  
 7:00 p.m. Young people's meeting, older group, conducted by Miss Elma Fox; subject, "What Constitutes Success."  
 8:00 p.m. Evening Service conducted by young people, with a travel talk by The Rev. Sloan, "Mountains."

Beginning Tuesday evening and for each Tuesday for the next eight or ten weeks the pastor will conduct a study on how to teach religion for the home and church.

—oOo—

**THE CHURCH OF JESUS CHRIST OF LATTER DAY SAINTS** will hold Sunday School at 10 a.m. in the social room of the recreation hall.

—oOo—

Because it brought some results last week, owners of automobiles or automotive parts about Mason City parking lots are advised to make their ownership known at the police station. Otherwise the cars or parts may be removed in cleaning the parkings. THIS NOTICE APPLIES TO AUTOMOBILES NOT IN GOOD CONDITION.

**CATHOLIC CHURCH**—Father A. Farrelly, pastor

Lenten services:

Holy Communion will be observed on week days during Lent at 7:15 a.m. and mass will be said at 8 a.m.

Special Lenten devotions are being held in St. Benedict's church in Mason City every Friday night, consisting of Rosary, Stations of the Cross, and Benediction of the Most Blessed Sacrament.

Sunday mass will be said in St. Benedict's church, Mason City, at 9 a.m. and in the American Legion hall, Coulee Center, at 11 a.m. Instructions for children will be given Saturday. Confessions will be heard Saturday evening and Sunday morning.

—oOo—

**FRED LUDWIG JEWELER**  
 NEW SPRING STOCK  
 COSTUME JEWELRY  
 SILVERWARE  
 MENS-TIE CHAINS  
 COLLAR-HOLDERS  
 STRAP-WATCHES  
**MASON CITY**

**MASON CITY LAUNDRY**  
 NOW IS THE TIME TO —  
 HAVE YOUR RUGS CLEANED  
 AND SIZED

9X12	\$4.00
8X11	\$3.50
6X9	\$2.50

SMALL RUGS 50¢ AND UP.  
 5¢ A YARD EXTR FOR FRINGE.

**FIACIALS OF MADAM WHITE COSMETICS**  
 GIVEN FREE  
 MRS. ERMA HOOD  
 COULEE TRADING CO.

**EXCLUSIVE STORY**  
 FRANCHOT TONE  
 FRI. SAT.

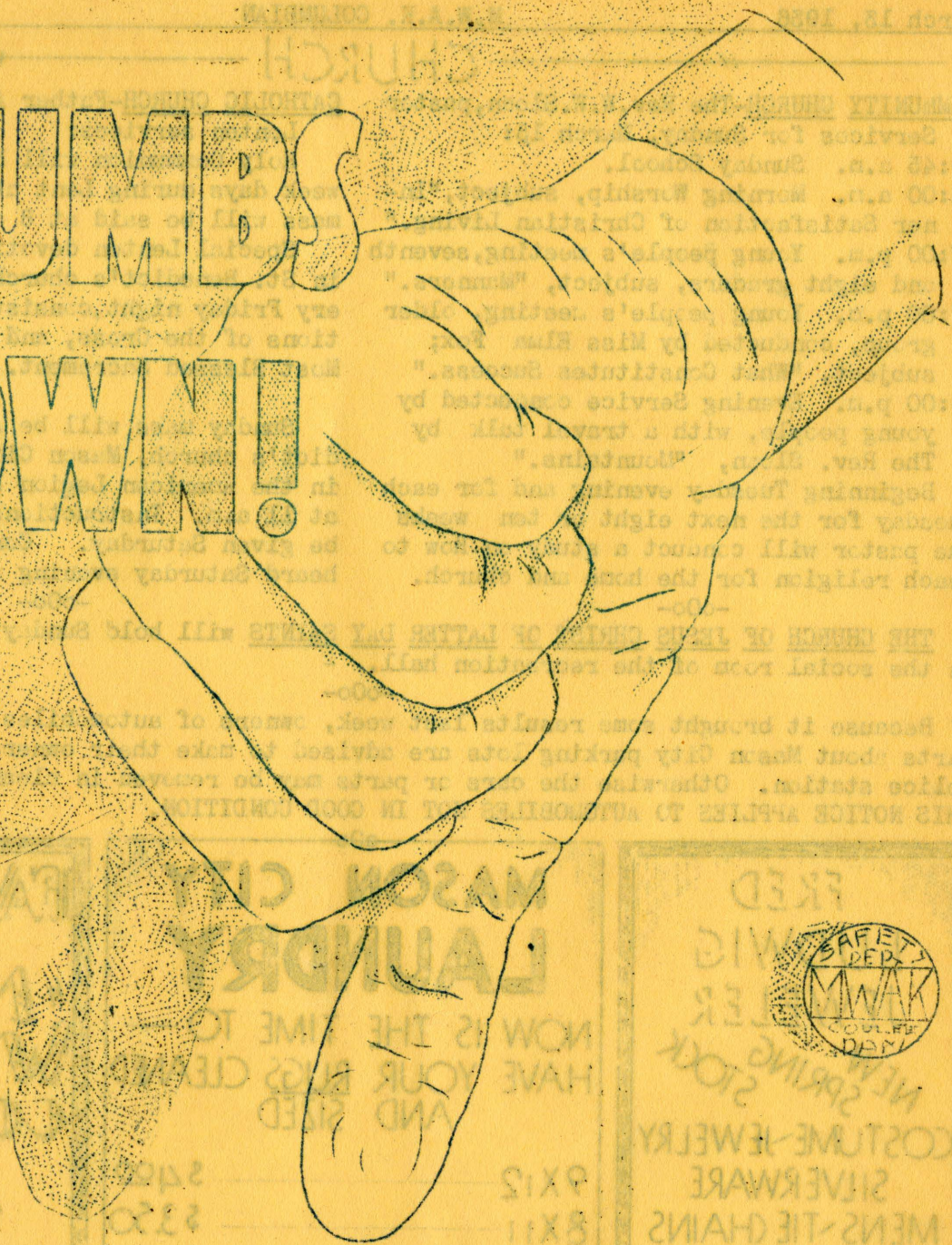
JEANNETTE NELSON  
**MACDONALD EDDY**  
**ROSE MARIE**  
 SUN. MON. TUES.

**DOUBLE FEATURE**  
 WED. THURS.

**MASON CITY THEATRE**



THUMBS  
DOWN!



ON  
ACCIDENTS







### BREAK POUR RECORD

Wednesday at midnight marked the time when 4000 cubic yards of concrete were lowered into forms to break by over 1100 yards the record of 2860 yards for Jan. 8. The record pour followed 2849 yards for Monday and 3760 cubic yards Tuesday. By noon Wednesday more than 2000 yards had been poured. Present mixes are for three and one-half minutes instead of the beginning five minute mixes.

Shortly before midnight on March 5 the 100,000-yard mark for concrete pouring was reached, with 100,418 yards recorded as a total for concrete. By Wednesday 112,220 yards had been poured.

Monthly figures to date are: November, 228 yards; December, 18,710; January, 56,374; February, 16,816, and 18,091 for the first 10 days in March.

-oOo-

### ADD TO BRETT PIT

By the last of this week 200 feet of conveyor lateral are expected to be added in Brett pit to lead the way for the use of another shovel. The shovel at work expects to hole through the present 40-foot cut early next week, with the use of the two laterals under way immediately after. Two shovels will nearly double the output of aggregate.

-oOo-

### PROTECTIVE CREAM PREVENTS CEMENT BURNS

-oOo-

Workmen Wednesday began the erection of a 50-foot timber bridge across the rock cut below the eastmix. On completion this will mean the elimination of the road above the eastmix.

-oOo-

By the last of this week five 6-foot bows are expected to arrive for Robin Hoods of the archery club.

### EVER HEAR OF ONE?

A screed--something new for non-constructionists--has recently been designed by the Company's designing engineer and is now being fabricated. The machine, with a 44-foot span will be used to smooth the concrete on the surface of the bucket for the dam. The bottom is curved from a radius of about 48 feet to correspond with the curvature of the bucket. It will be propelled lengthwise of the dam by a 10 horse power motor. Surface concrete will be drier than present concrete being poured.

-oOo-

### CONVEYOR STARTS

At nine o'clock Tuesday night sand and gravel first started on the long conveyor ride from the east side toward the north end of the west cofferdam, a peak length of about 4000 feet. Eight rubber-edged wood guards flatten the belting north of the suspension bridge tower to divert the filler material behind the cofferdam. At the south end another guard first diverts the filler. This guard can be lifted to allow filler to pass to the cells south of block 40. The bridge used was damaged by ice last week.

-oOo-

### DANCE PAYS FOR SCHOOL

When the Mason City Fire Department band plays for the dance in the mess hall March 17, St. Patrick night, proceeds will be cutting down the final \$300 necessary to pay for building of the Elmerton school. Community indebtedness for building was about \$1100.

-oOo-

Eighty-eight yards of concrete were poured Thursday for second lift forms and flooring for the eastmix. First lift forms are 15 feet; the second are 22. As soon as concrete is hard enough the four mixers will be placed.

-oOo-



**RADIO**

**SALE**

**powerful**

**DETROLA**

**\$ 27<sup>00</sup> up**

**AND OTHER MAKES**

**PHILCO**

**ATWATER KENT**

**GILFILLIN**

**RCA**

**CROSLEY**

**COULEE TRDG**