

6-27-1940

## Columbian, Vol. 6, No. 13

Consolidated Builders

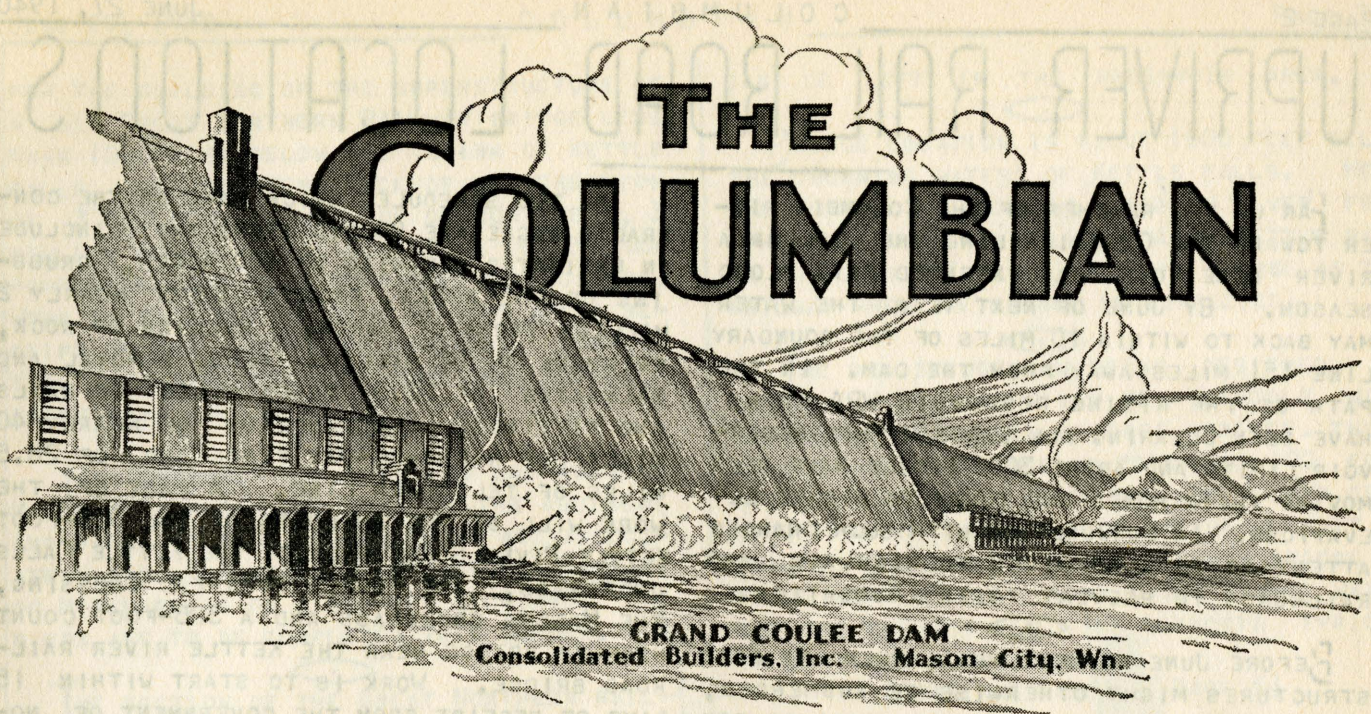
Follow this and additional works at: [http://dc.ewu.edu/mwak\\_columbian](http://dc.ewu.edu/mwak_columbian)

---

### Recommended Citation

Consolidated Builders, "Columbian, Vol. 6, No. 13" (1940). *Columbian (Grand Coulee Dam newsletter)*. 123.  
[http://dc.ewu.edu/mwak\\_columbian/123](http://dc.ewu.edu/mwak_columbian/123)

This Book is brought to you for free and open access by the University Archives & Special Collections at EWU Digital Commons. It has been accepted for inclusion in *Columbian (Grand Coulee Dam newsletter)* by an authorized administrator of EWU Digital Commons. For more information, please contact [jotto@ewu.edu](mailto:jotto@ewu.edu).



Vol. 6 No. 13

June 27, 1940

## - FOURTH OF JULY -

FOR THE PAST FIVE YEARS IT HAS BEEN THE PRACTICE OF THE PRINCIPAL CONTRACTOR ON THE GRAND COULEE DAM TO CELEBRATE THE FOURTH OF JULY WITH A FIREWORKS DISPLAY. JULY THE FOURTH, NINETEEN FORTY, FINDS THE WORLD IN THE MIDST OF A TERRIFIC STRUGGLE THAT IS BRINGING HUNGER AND SUFFERING TO MILLIONS OF OUR FELLOW MEN. FOR THIS REASON IT HAS BEEN DECIDED TO FOREGO THE USUAL CELEBRATION THIS YEAR AND TO DONATE THE MONEY THAT WOULD ORDINARILY BE EXPENDED FOR THIS PURPOSE TO THE AMERICAN RED CROSS FOR THE BENEFIT OF THOSE WHO ARE NOT SO FORTUNATE AS OURSELVES.

CONSOLIDATED BUILDERS, INC.

# UPRIVER RAIL, ROAD LOCATIONS

FAR UP THE REACHES OF THE COLUMBIA RIVER TOWARD THE CANADIAN LINE THE COLUMBIA RIVER RESERVOIR HAS EXTENDED THIS FLOOD SEASON. BY JUNE OF NEXT YEAR THE WATER MAY BACK TO WITHIN 10 MILES OF THE BOUNDARY LINE 151 MILES AWAY FROM THE DAM. IN THE PATH OF THE RISING RESERVOIR WPA CREWS HAVE BEEN CLEARING ALL LANDS WITHIN RESERVOIR LIMITS AND ABOUT 3000 PEOPLE HAVE BEEN MOVING THEIR HOMES AND TOWNS TO HIGHER ELEVATIONS. IN CONJUNCTION WITH SUCH CHANGES ATTENTION IS ALSO GIVEN TO HIGHWAYS AND RAILROADS TO PREVENT THEIR INUNDATION.

BEFORE JUNE OF NEXT YEAR, WHEN TRAFFIC STRUCTURES MIGHT OTHERWISE BE SUBMERGED, THE PROGRAM WILL BE COMPLETED UPRIVER FOR RELOCATING 86 MILES OF STATE HIGHWAY, 69 MILES OF COUNTY ROADS AND 29 MILES OF RAILROAD, ACCORDING TO THE MOST RECENT ESTIMATE OF THE BUREAU OF RECLAMATION. AMONG OTHER ITEMS WILL BE THE BUILDING OF SIX IMPORTANT BRIDGES AND FROM THREE TO FOUR GRADE SEPARATIONS. CONTRACTS FOR ALL THE URGENTLY NEEDED DIVISIONS OF THIS WORK WILL HAVE BEEN AWARDED WITHIN THE NEXT FEW WEEKS, WITH THE EXCEPTION OF A LARGE SPOKANE RIVER HIGHWAY BRIDGE, NOW BEING DESIGNED. ABOUT HALF THE STATE HIGHWAY WORK IS COMPLETED FOR THE PROGRAM. COUNTY ROAD CONSTRUCTION IS UNDER WAY.

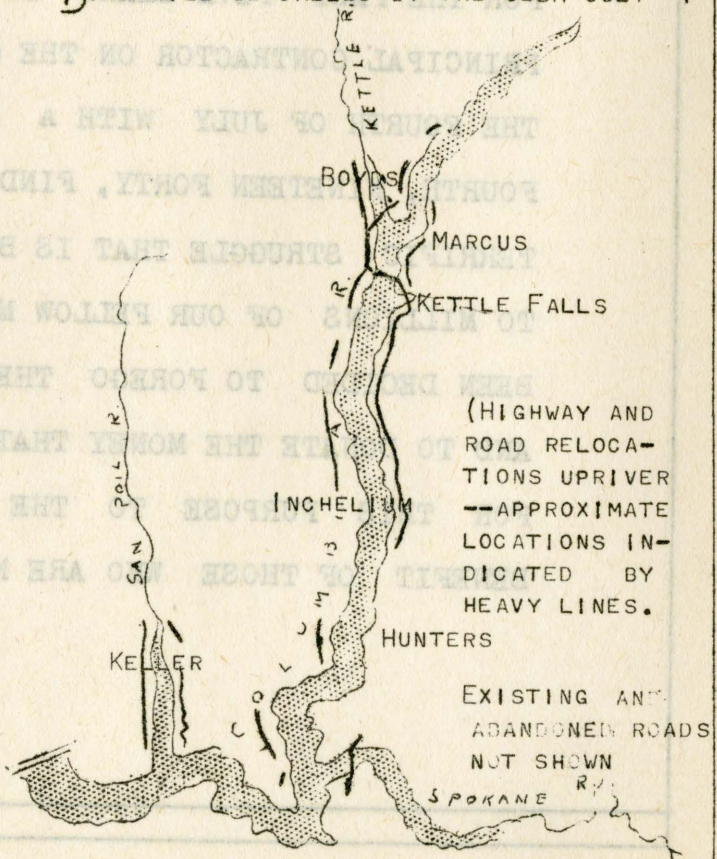
PRELIMINARY INVESTIGATIONS FOR THE ROAD PROGRAM WERE BEING MADE FROM THE BUREAU OF RECLAMATION OFFICES IN COULEE DAM BACK IN 1937. ALL LOCATIONS HAVE NOW BEEN MADE. JOB CONTRACTS ARE AWARDED BY THE STATE OF WASHINGTON FOR WORK IN WHICH THE STATE IS THE PRINCIPAL AGENCY INVOLVED. WHEN OTHER AGENCIES ARE VITALLY CONCERNED, SUCH AS THE GREAT NORTHERN RAILWAY, THE BUREAU OF RECLAMATION AWARDS THE CONTRACTS.

BIDS WERE RECEIVED YESTERDAY (JUNE 26) AT THE USBR OFFICES FOR A MAJOR JOB IN CONNECTION WITH UPRIVER ROADS. THIS WAS FOR EARTHWORK, STRUCTURES AND TRACK FOR GREAT NORTHERN RAILWAY RELOCATION FOR 16 MILES OF TRACK FROM THE NEW TOWN OF KETTLE FALLS (FORMERLY MEYERS FALLS) TO WILLIAMS, ALONG THE EAST SIDE OF THE RIVER; AND FOR 13 MILES OF TRACK FROM KETTLE FALLS TO BOYDS (WEST SIDE). THE SAME CONTRACTS WILL INCLUDE EARTHWORK AND STRUCTURES ON ADJACENT HIGHWAY RELOCATION.

THE TWO SCHEDULES WHICH MAKE UP THE CONTRACTS AGGREGATE 94 BID ITEMS AND INCLUDE AN ESTIMATED CLEARING OF 400 ACRES, GRUBBING OF 132 ACRES, EXCAVATION OF NEARLY 2 MILLION YARDS OF EARTH, 1/2 MILLION OF ROCK, OVERHAUL OF 12 MILLION YARDS, REMOVAL AND SALVAGING OF 22.8 TRACK MILES OF RAILS AND FITTINGS, CONSTRUCTION OF NEARLY 40 MILES OF RIGHT-OF-WAY FENCE AND OF 28.5 MILES OF TELEGRAPH LINE. A PART OF THE WORK WILL BE THE BUILDING OF THE 325-FOOT KETTLE RIVER GORGE BRIDGE, THE KETTLE FALLS UNDERPASS, THE POWELL OVERHEAD CROSSING, THE MARCUS UNDERPASS AND A 325-FOOT COUNTY HIGHWAY BRIDGE NEAR THE KETTLE RIVER RAILROAD BRIDGE. WORK IS TO START WITHIN 15 DAYS OF RECEIPT FROM THE GOVERNMENT OF NOTICE TO PROCEED, WITH COMPLETION OF ALL WORK SET FOR NOT LATER THAN 275 CALENDAR DAYS FOLLOWING. THE CONTRACT IS IN ACCORDANCE WITH AN AGREEMENT BETWEEN THE BUREAU OF RECLAMATION AND THE GREAT NORTHERN RAILROAD.

COLUMBIA RIVER RAILROAD BRIDGE

BIDS WILL BE CALLED BY THE USBR JULY 1



FOR THE BUILDING OF THE SUPERSTRUCTURE OF A BIG GREAT NORTHERN RAILWAY BRIDGE LESS THAN 1000 FEET BELOW THE BRINK OF KETTLE FALLS. MAJOR ITEMS INCLUDE THE ERECTION OF 3,640,000 POUNDS OF CARBON STEEL, 3 MILLION POUNDS OF SILICON STEEL AND 252,000 POUNDS OF CAST STEEL FOR PINS AND ROCKERS. WORK IS TO START WITHIN 30 DAYS AFTER RECEIPT OF THE NOTICE TO PROCEED. COMPLETION IS SLATED FOR NOT MORE THAN 260 CALENDAR DAYS FOLLOWING.

THIS CONTRACT WILL FOLLOW ONE AWARDED MARCH 27 FOR CONSTRUCTION OF THE ABUTMENT AND PIERS TO A. A. PRENDERGAST AND ASSOCIATES AND INDUSTRIAL CONTRACTORS' COMPANY OF MINNEAPOLIS ON A BID OF \$109,990. THE PIERS ARE TO BE COMPLETED THIS SUMMER.

THE SECTION OF THE GREAT NORTHERN RAILWAY FOR COMPLETE RELOCATION PROCEEDS FROM THE NEW TOWN OF KETTLE FALLS FIVE MILES UP RIVER TO MARCUS OVER LANDS THAT WILL BE INUNDATED AND THERE CROSSES THE EXISTING GREAT NORTHERN BRIDGE TO FOLLOW ALONG THE WEST BANK OF THE KETTLE RIVER, A TRIBUTARY OF THE COLUMBIA. THE NEW RAILROAD BRIDGE WILL CHANGE THIS. THE CHANGE WILL SEND THE RAILROAD ABOUT 3 1/2 MILES NORTHWEST DIRECTLY TO THE NEW BRIDGE ON THE COLUMBIA RIVER AND THE RAILROAD WILL FOLLOW UP THE WEST BANK OF THE COLUMBIA TO KETTLE RIVER.

COLUMBIA RIVER HIGHWAY BRIDGE

ONE HUNDRED FEET FROM THE SITE FOR THE NEW RAILROAD BRIDGE A NEW HIGHWAY BRIDGE IS RISING AND ONLY A FEW FEET AWAY IS THE PRESENT HIGHWAY BRIDGE AT KETTLE FALLS, ITS LIFE NOW LIMITED TO MONTHS. THE NEW BRIDGE IS TO APPEAR VERY MUCH LIKE THE STEEL HIGHWAY BRIDGE CROSSING THE COLUMBIA HERE AT THE DAM SITE. IT WILL BE 1267 FEET LONG BETWEEN ABUTMENT PIERS WITH A MAIN SPAN OF 600 FEET.

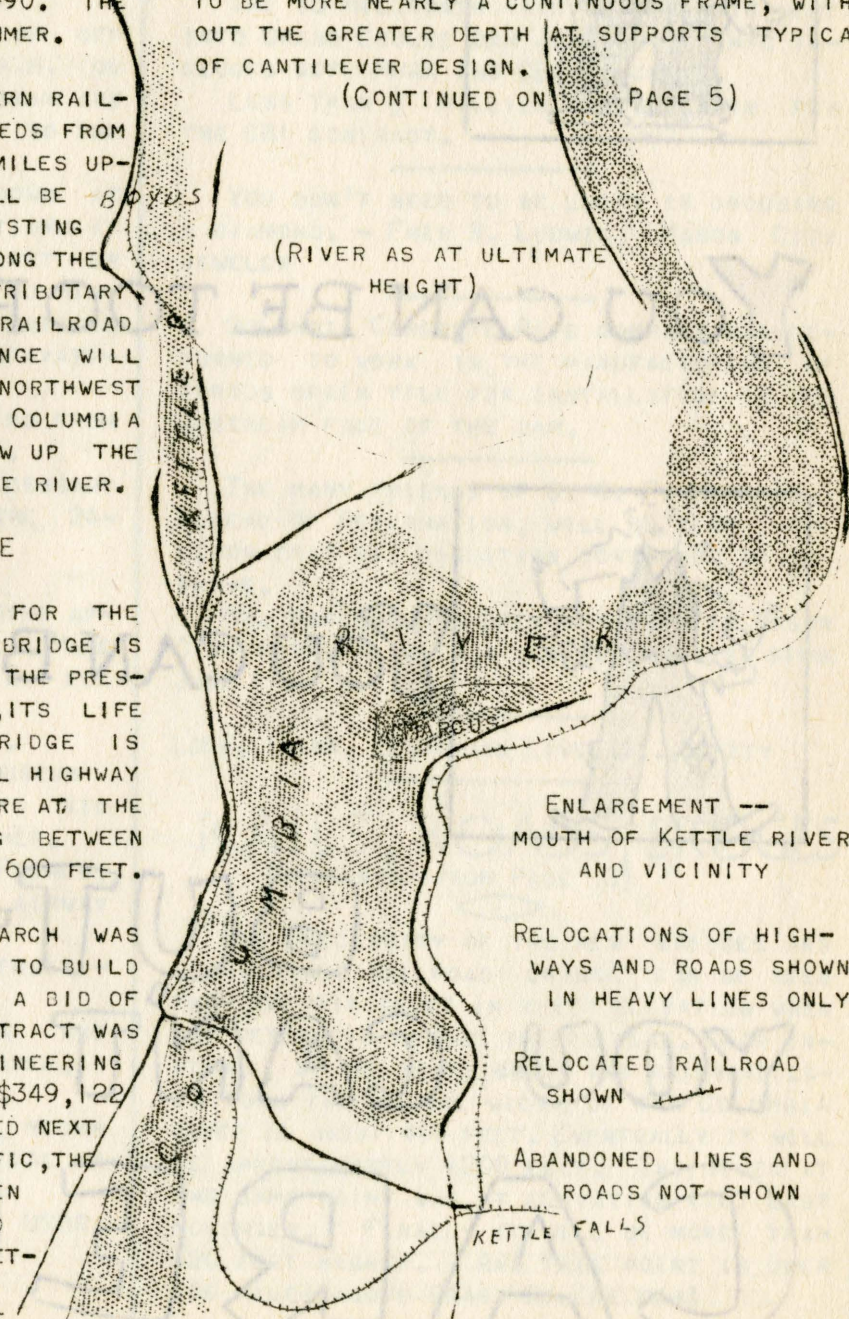
S. S. MULLEN OF SEATTLE LAST MARCH WAS AWARDED THE CONTRACT BY THE STATE TO BUILD THE PIERS AND SUBSTRUCTURE ON A BID OF \$102,647. THE SUPERSTRUCTURE CONTRACT WAS LET BY THE STATE TO L. ROMANO ENGINEERING COMPANY OF SEATTLE ON A BID OF \$349,122 JUNE 7. THE BRIDGE WILL BE COMPLETED NEXT WINTER. WHEN IT IS READY FOR TRAFFIC, THE PRESENT HIGHWAY BRIDGE WILL BE TAKEN DOWN AND THE TWO MAIN PIERS REMOVED TO THE GROUND SURFACE. TIMBERS, METAL PARTS AND MISCELLANEOUS PIECES MUST BE DISPOSED OF. ONLY CONCRETE

CAN BE LEFT IN THE RESERVOIR AREA.

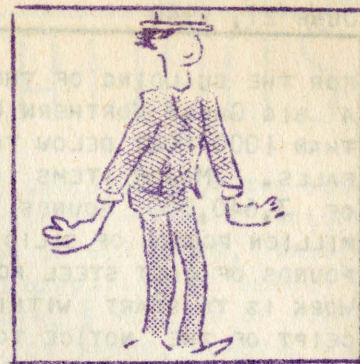
BRIDGE LOCATION IS ABOUT 1000 FEET BELOW THE CHURNING WATERS OF KETTLE FALLS. HERE THE HIGHWAY CROSSES THE COLUMBIA RIVER FROM THE EAST AND THEN FOLLOWS ALONG KETTLE RIVER TO BOYDS. THIS IS THE SAME COURSE AS THE RAILWAY WHEN THE CHANGE IS COMPLETED.

THE BIG BRIDGE NOW BEING DESIGNED TO CROSS THE SPOKANE RIVER NEAR LINCOLN WILL BE UNLIKE OTHER NEW BRIDGES UP RIVER. THESE HAVE A SUPERSTRUCTURE UP TO NEARLY 100 FEET HIGH, AS IN THE CASE OF THE CANTILEVER CONSTRUCTION OF THE RAILROAD BRIDGE WHEN IT IS BUILT. THE SPOKANE RIVER HIGHWAY BRIDGE IS TO BE MORE NEARLY A CONTINUOUS FRAME, WITHOUT THE GREATER DEPTH AT SUPPORTS TYPICAL OF CANTILEVER DESIGN.

(CONTINUED ON PAGE 5)

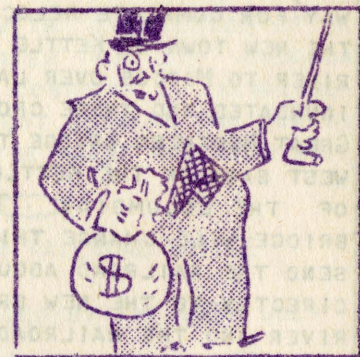


YOU CAN BE TOO THIN



YOU CAN BE TOO FAT

YOU CAN BE TOO RICH



YOU CAN BE TOO POOR

BUT—  
YOU CAN'T BE TOO  
CAREFUL

# FOURTH OF JULY SHUTDOWN

IN GENERAL, THE FOURTH OF JULY WILL BE OBSERVED BY CBI WITH A JOB SHUTDOWN FOR A 24-HOUR PERIOD EXTENDING FROM MIDNIGHT ON JULY 3 TO MIDNIGHT, JULY 4. THIS APPLIES TO ALL CONCRETING OPERATIONS.

SCHEDULE DETAILS, ACCORDING TO A BULLETIN ISSUED FROM THE OFFICE OF THE SUPERINTENDENT YESTERDAY, ARE:

UNLOADING CREWS AT THE CEMENT SILOS; AFTER UNLOADING AVAILABLE CARS ON JULY 3, WILL RETURN TO WORK AT 5 P.M. JULY 5. THE BLENDING PLANT WILL OBSERVE THE REGULAR 24-HOUR SHUTDOWN.

RAILROAD SWITCHING CREWS WILL BE OFF FROM WEDNESDAY AT 4 P.M. UNTIL 8 A.M. ON JULY 5. THE ELECTRIC CITY YARDS CREWS ARE TO BE OFF FROM 4:30 P.M. WEDNESDAY TO THE START OF DAY SHIFT FRIDAY.

THE GRAVEL PLANT WILL SHUT DOWN AT 10:40 P.M. JULY 3 TO RESUME OPERATIONS AT 8 A.M. JULY 5. NO REPAIRS AT THE PIT OR PLANT WILL BE MADE FROM MIDNIGHT TO MIDNIGHT FOR JULY 3 AND 4. PIT OPERATIONS WILL HALT MIDNIGHT; JULY 3, WITH EXCAVATION RESUMING FRIDAY, DAY SHIFT.

THE MACHINE SHOP HALT WILL EXTEND FROM MIDNIGHT, JULY 3, TO 8 A.M. JULY 5.

ONLY FOR MAINTENANCE AND OTHER NECESSARY DUTIES WILL MEN BE EMPLOYED DURING THE 24-HOUR PERIOD.

CIVIL SERVICE EXAMINATIONS --- CLOSING APPLICATION DATE, JULY 2, FOR DRILLER, MARE ISLAND NAVY YARD, CALIFORNIA; JULY 10 FOR MACHINIST (OUTSIDE); SAME PLACE.

JUNIOR ENGINEER, VARIOUS BRANCHES.

JULY 11 -- ASSISTANT CURATOR, MUSEUM AIDE POSITIONS; ASSISTANT SCIENTIFIC AID (OPTIONAL BRANCHES); JUNIOR ASTRONOMER.

JULY 12--ASSISTANT TRANSLATOR (FRENCH, GERMAN, ITALIAN, SPANISH); JUNIOR AIRWAY TRAFFIC CONTROLLER.

JULY 18--FURNITURE DESIGNER; CONSTRUCTION COST AUDITOR, SEVERAL GRADES.

JULY 19 -- DIRECTOR OF LIBRARIES AND ASSISTANT; ADVANCED APPRENTICE ENGRAVER.

JULY 11 -- CHIEF MEDICAL OFFICER.

JUNE 30 -- AERONAUTICAL ENGINEER, MECHANICAL ENGINEER, ASSOCIATE AERONAUTICAL INSPECTOR, WITH VARIOUS BRANCHES.

FURTHER INFORMATION: M.M. SMITH, USBR ADMINISTRATION BUILDING.

S-A-F-E-T-Y SPELLS SAFETY.

## NO FIREWORKS IN MASON CITY

BECAUSE OF THE GREAT DANGER TO LIFE AND PROPERTY, THE USE OF FIREWORKS IN MASON CITY WILL NOT BE PERMITTED FOR THE FOURTH OF JULY SEASON.

THE 10 MILLIONTH YARD OF CONCRETE WENT INTO GRAND COULEE DAM JUNE 19. THIS INCLUDES BOTH MWAK AND CBI CONCRETE.

LESS THAN 1/2 MILLION YARDS REMAIN FOR THE CBI CONTRACT.

YOU DON'T NEED TO BE LUCKY IN CHOOSING A DIAMOND. - FRED N. LUDWIG, MASON CITY JEWELER

COLUMBIA CONCRETE PIPE COMPANY HAS RETURNED TO WORK IN THE MANUFACTURING OF POROUS DRAIN TILE FOR INSTALLATION IN THE UPSTREAM FACE OF THE DAM.

THE MANY FRIENDS OF O. G. F. MARKHUS, BUREAU OF RECLAMATION, WILL BE GLAD TO LEARN THAT HIS CONDITION CONTINUES TO IMPROVE.

MR. MARKHUS HAS BEEN CONFINED IN MASON CITY HOSPITAL WITH A SERIOUS ILLNESS SINCE JUNE 11.

LOOK, THINK, LEARN AND LIVE.....SAFETY

## RAILS, ROADS, BRIDGES

(CONTINUED FROM PAGE 3)

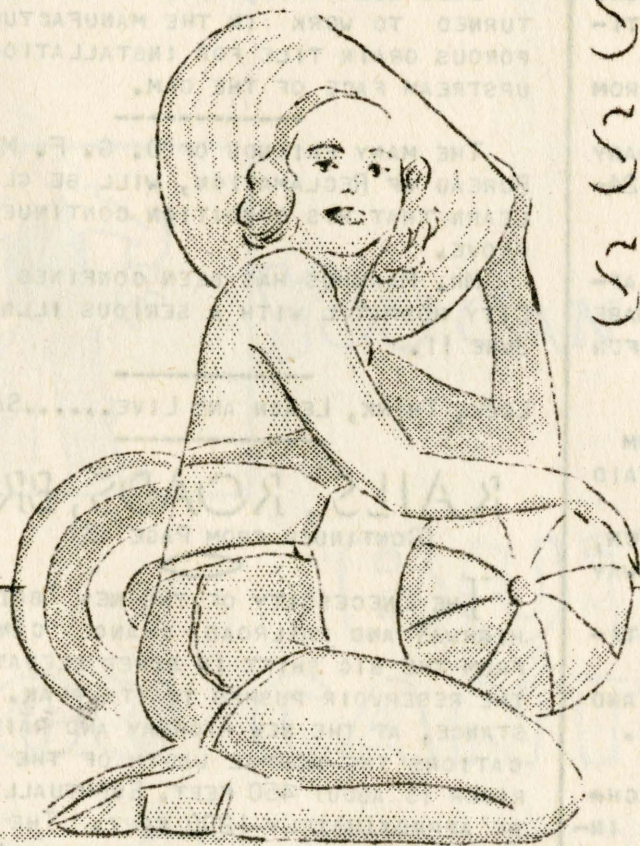
THE NECESSITY OF THE NEW BRIDGES AND HIGHWAY AND RAILROAD CHANGE CAN BE SEEN FROM THE BIG SHIFT IN RIVER ELEVATION WHEN THE RESERVOIR PUSHES TO ITS PEAK. FOR INSTANCE, AT THE NEW HIGHWAY AND RAILROAD LOCATIONS THE NORMAL WIDTH OF THE COLUMBIA RIVER IS ABOUT 450 FEET. EVENTUALLY IT WILL BE APPROXIMATELY 1200 FEET. THE RIVER AT THE SAME POINT WAS AT ELEVATION 1167 LAST NOVEMBER. FINALLY IT WILL BE MORE THAN 120 FEET HIGHER. AND THIS POINT IS OVER 100 MILES ABOVE GRAND COULEE DAM!

SUMMER

NEEDS

NEEDS

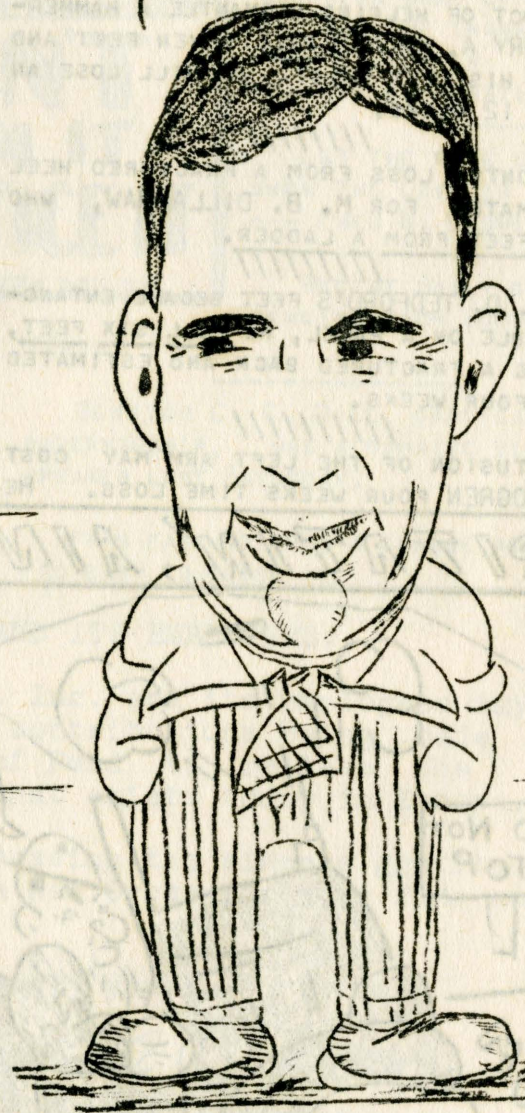
SKIN CREAM  
SUN TAN OIL  
SUNGLASSES  
SWIM CAPS



MASON  
CITY  
STORES

I'M SHO' NUFF  
UNHAPPY WE UN'S  
DON'T UNDEA'STAN'  
YO' NORTHIN' LINGO,  
MR. BEDFORD,

IF I GET SOME OF  
THOSE HARD NOSE  
FOREMEN DOWN  
HERE FROM  
GRAND COVLEE  
YOU'LL UNDEA'STAN



BY  
ROY GRIDLEY

### CORPUS CHRISTI FORTIFICATION JOB

C. P. BEDFORD, CBI JOB SUPERINTENDENT SINCE MARCH, 1938, LEAVES (JUNE 18) TO HELP GOVERNMENT BUILD \$25,000,000 NAVAL AND AIR TRAINING BASE IN TEXAS.



# MASON CITY HOSPITAL

JUNE 25; TO MR. AND MRS. W. C. CASSAL, OsBORNE; A DAUGHTER.  
 JUNE 21, TO MR. AND MRS. M. A. HOFFMAN, ELECTRIC CITY, A SON.  
 JUNE 22, TO MR. AND MRS. IVAN BELANGER, GRAND COULEE, A SON.  
 JUNE 20, TO MR. AND MRS. O. M. CONNER, MASON CITY, A SON.  
 JUNE 14, TO MR. AND MRS. P. H. BURY, COULEE CENTER, A DAUGHTER.

---000---  
 INDUSTRIAL CASES  
 ---

IN THE ACT OF HELPING DISMANTLE A HAMMER-HEAD, HENRY A. PALMER FELL SEVEN FEET AND FRACTURED HIS LEFT WRIST. HE WILL LOSE AN ESTIMATED 12 WEEKS.

SIX MONTHS LOSS FROM A FRACTURED HEEL ARE ESTIMATED FOR M. B. DILLASHAW, WHO FELL 10 FEET FROM A LADDER.

WHEN M. D. TEDFORD'S FEET BECAME ENTANGLED IN CABLE ON A PANEL, HE FELL SIX FEET, SUFFERING A FRACTURED BACK AND ESTIMATED LOSS OF FOUR WEEKS.

A CONTUSION OF THE LEFT ARM MAY COST V. A. SHOGREN FOUR WEEKS TIME LOSS. HE

FELL 10 FEET WHILE REMOVING PLYBOARD FROM THE SIDE OF THE DAM.

---000---  
 NON-INDUSTRIAL AND FAMILY PLAN  
 ---

MAJOR OPERATIONS FOLLOWED BY RAPID CONVALESCENCE WERE FOR MRS. W. W. THOMAS AND MRS. G. W. THOMAS.

MRS. W. J. DUFF AND R. P. DUFF KNOW THE DANGERS OF PNEUMONIA. NOW THEIR PNEUMONIA IS GONE AND THEY ARE AT HOME.

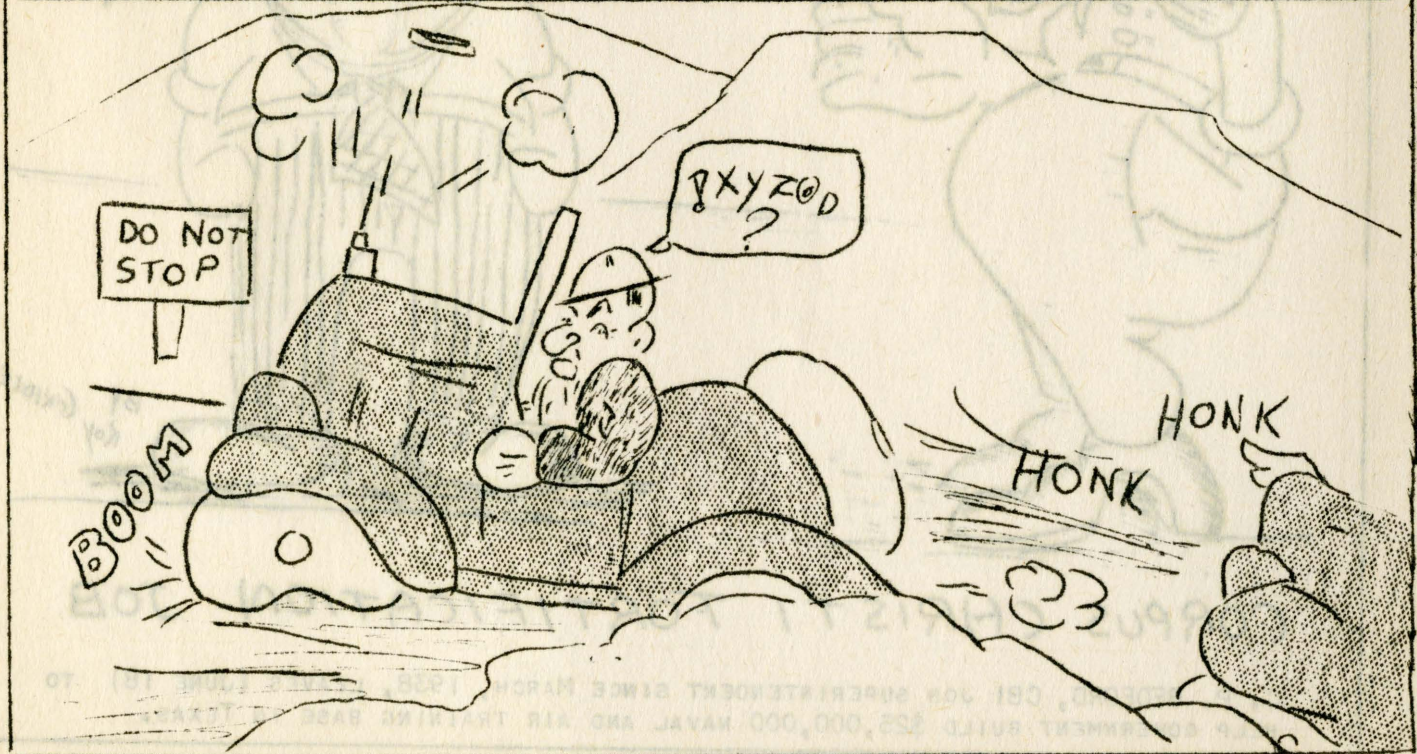
VICTIM OF A FRACTURED BACK FROM AN AUTOMOBILE ACCIDENT, RICHARD WANS WAS RELEASED RECENTLY WITH HIS FRACTURE WELL MENDED.

TWO HUNDRED MEMBERS AND ASSOCIATES OF THE PACIFIC COAST OPHTHALMOLOGICAL (A MEDICAL) SOCIETY WERE VISITORS AT THE DAM SITE MONDAY AND MESS HALL DINERS.

AN ANCIENT KNIFE, STILL SHARP AS A RAZOR, HAS BEEN FOUND IN EGYPT. THIS PROVES THAT EGYPTIAN WOMEN NEVER SHARPENED PENCILS.

SALT TABLETS IN HOT WEATHER!

## IRRITATION, AIN'T IT? - by Roy Gridley



# PAY DAY WEDNESDAY

INSTEAD OF PAYING OFF THURSDAY OF NEXT WEEK, CBI WILL PAY WEDNESDAY. THURSDAY IS THE FOURTH OF JULY.

AFTER GLANCING OVER SOME EXAMINATION PAPERS, WE FIND SOME ANSWERS THAT LOOK FAMILIAR ---

//////////

"A MYTH IS A FEMALE MOTH."

"A BRUNETTE IS A YOUNG BEAR."

"A BLIZZARD IS THE INSIDE OF A FOUL."

"AN OPTIMIST IS A MAN WHO LOOKS AFTER YOUR EYES; A PESSIMIST LOOKS AFTER YOUR FEET."

"IMMORALITY IS RUNNING OFF WITH ANOTHER'S WIFE."

"THE INHABITANTS OF PARIS ARE CALLED PARASITES."

"A QUACK DOCTOR IS ONE WHO LOOKS AFTER DUCKS."

"A GRASS WIDOW IS THE WIFE OF A DEAD VEGETARIAN."

"PARAFFIN IS THE NEXT ORDER OF ANGELS ABOVE SERAPHIMS."

THE LURE OF FRED N. LUDWIG'S DIAMONDS--- THE PRIDE AND JOY OF POSSESSION.



CONCRETE PLACING FOR THE PUMPING PLANT WING DAM IS THREE-FOURTHS COMPLETED AND THE WEST POWER HOUSE CONTROL BAY IS NOT FAR FROM BEING 100 PER CENT COMPLETED.

IN CONNECTION WITH THE INFORMATION PRESENTED ON RELOCATION WORK UPRIVER FROM THE DAM, WE THANK R.W. SMITH OF THE USBR IN PARTICULAR FOR HIS COOPERATION.

LET THE RING ON HER HAND SHOW THE LOVE IN YOUR HEART --- FRED N. LUDWIG

RECENT DAILY CONCRETE IS RANGING FROM 8000 TO 9500

YARDS.

SENATOR C. C. DILL, CANDIDATE FOR THE GOVERNORSHIP, WAS A DAMSITE VISITOR AND SPEAKER LAST SATURDAY.

IT'S EASY TO OPEN A CHARGE ACCOUNT; NOT SO EASY TO CLOSE IT.

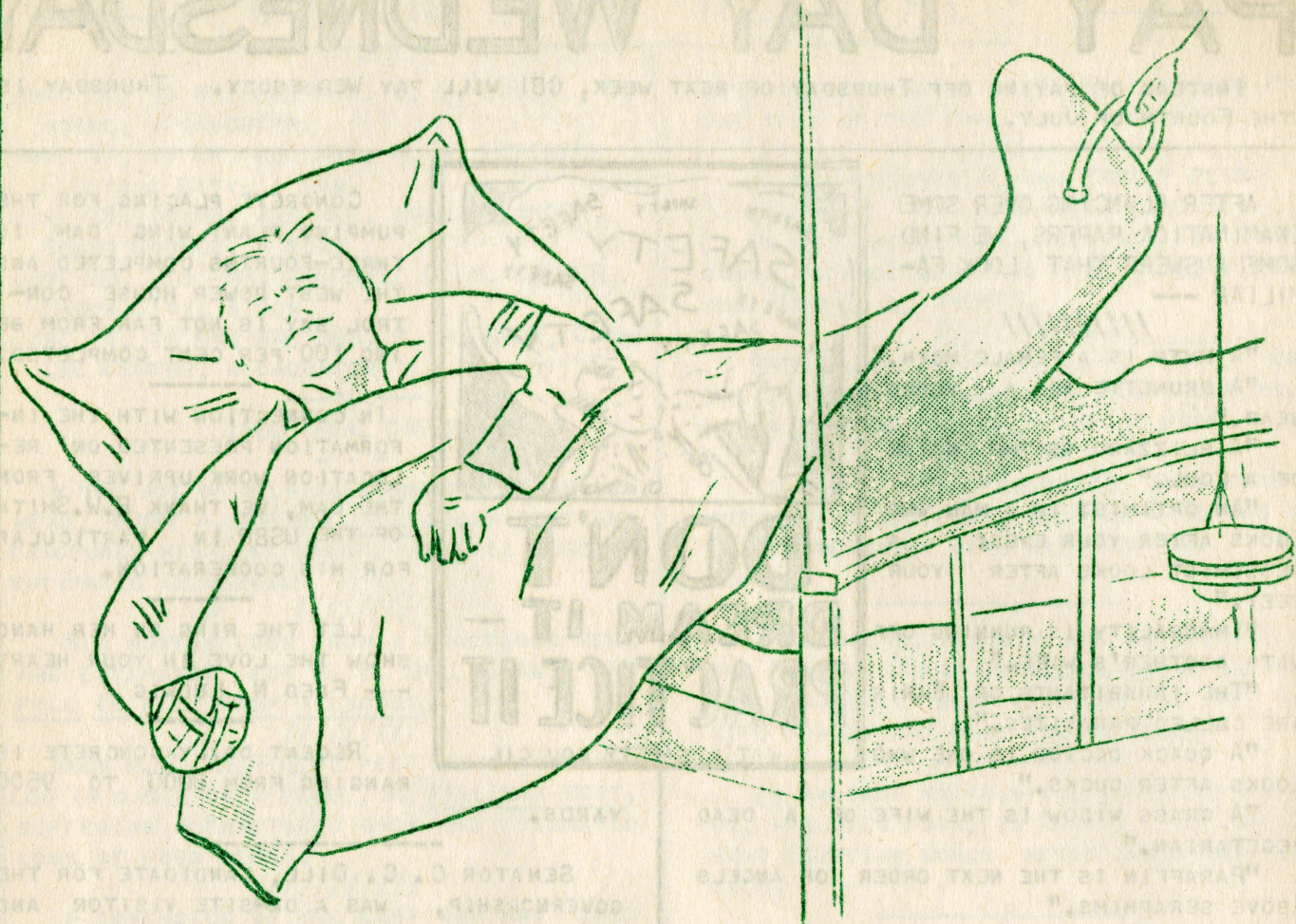
## TO CONSOLIDATED BUILDERS, INC. AND ITS EMPLOYEES:

The Consolidated Builders, Inc. and its employees may justly be proud of the generous contributions being made to the American Red Cross War Relief Fund to relieve the appalling suffering and horror that exists today in Europe.

I take this medium of expressing the sincere gratitude and appreciation of the American Red Cross for your fine and generous aid.

Very sincerely yours,

Clifford O. Moe, Chairman  
The American Red Cross  
Grand Coulee Chapter



COMPENSATION

does NOT relieve

PAIN



# 'BEARDED MAMAS' & U.S.B.R. STARS SET FOR SUNDAY TUSSELS



PRECEDING THE BREAKING OF A SERIES TIE BETWEEN THE CBI DAM BUILDERS AND THE USBR ALL STARS, THE "BEARDED MAMAS" OF THE DAM SITE WILL SETTLE A SCORE WITH A FEMININE BRIGADE SUNDAY NIGHT ON THE CBI FIELD. THE OPENER IS BOOKED FOR 7 SHARP.

IT'S ALL IN THE INTERESTS OF THE AMERICAN RED CROSS FUND FOR WAR RELIEF. ALL AD-MISSION PROCEEDS ARE TO GO TO WAR SUFFERERS.

FESTOONED AND FEATHERED IN FEMININE FRILLERY, BUXOM BRUNETS AND BLONDES WHO AT ALL OTHER TIMES ARE DECIDEDLY MASCULINE ARE GOING TO ADOPT A FAMILY THIS TIME TO SHOW A WOMEN'S SOFTBALL TEAM HOW TO PLAY SOFTBALL. THESE "MATRONLY" MEN ARE REQUIRED TO SHOW PROPER MOTHERLY ATTENTION TO THEIR YOUNGSTERS. SEE HOW THEY DO IT!

TWO YEARS AGO 2000 PEOPLE GOT SORE SIDES FROM FOLLOWING THE ANTICS OF A "FEMININE" TEAM WHO THEN HAD NO "CHILDREN".

LAST THURSDAY THE USBR ALL-STARS TOOK THE SECOND IN A THREE GAME SERIES WITH THE DAM BUILDERS 10 TO 9 IN 10 INNINGS. THE DAM BUILDERS BROKE LOOSE ONLY AFTER THE SEVENTH INNING IN THE FIRST GAME TO WIN 9 TO 4.

HELEN BRUNSTAD, COULEE DAM, WILL DEFEND HER CROWN AS WOMEN'S SINGLES TENNIS CHAMP IN THE SPOKANE CITY TOURNAMENT THIS WEEK END.

### WOMEN'S SOFTBALL LEAGUE LEADERS TIED

AN UNDISPUTED RATING AS FIRST HALF WINNER OF THE WOMEN'S SOFTBALL LEAGUE WILL BE SETTLED IN THE OPENING BATTLE FRIDAY, USBR FIELD, WHEN COULEE DAM MEETS GRAND COULEE. THE WINNER WILL HAVE TAKEN SEVEN OF EIGHT GAMES. THE FIRST HALF ENDS FRIDAY.

MANY MOTORISTS SEEMS TO THINK THAT THE WARNING SIGNS AT RAILROAD CROSSINGS ARE INTENDED FOR THE LOCOMOTIVE ENGINEER.

### GRAND COULEE DAM SOFTBALL LEAGUE (END OF FIRST HALF)

TEAM	WON	LOST
TRANSPORTATION	14	1
CONCRETE	10	5
BOOSTERS	8	7
PIPE FITTERS	7	8
TRESTLE	7	8
MASON CITY	0	15



REMEMBER THAT THERE ARE NO SAFE FIREWORKS. ALL ARE EXPLOSIVE. ALMOST ANY TYPE CAN PRODUCE BLINDNESS, SERIOUS BURNS, DISFIGURATION, EVEN DEATH.

WOMEN THROW GAUNTLET AGAIN IN SPOKANE GRAND COULEE DAM SITE'S REPRESENTATIVE WOMEN'S SOFTBALL TEAM, THE COULEE DAMSELS, STEP BACK TO SPOKANE THIS SUNDAY FOR THEIR SECOND AND THIRD GAMES OF THE YEAR. ON SPOKANE'S FRANKLIN FIELD THE LOCALS WILL START A DOUBLE-HEADER AT 6 P.M. WITH GLASCOCK-MILBERG, ONE OF THE CITY'S TWO STRONGEST TEAMS.

AFTER OVERCOMING AN EARLY LEAD, THE DAMSELS TOOK SILVER LOAF, THE OTHER TOP-RANKING TEAM, 11 TO 8 IN SPOKANE LAST SUNDAY.

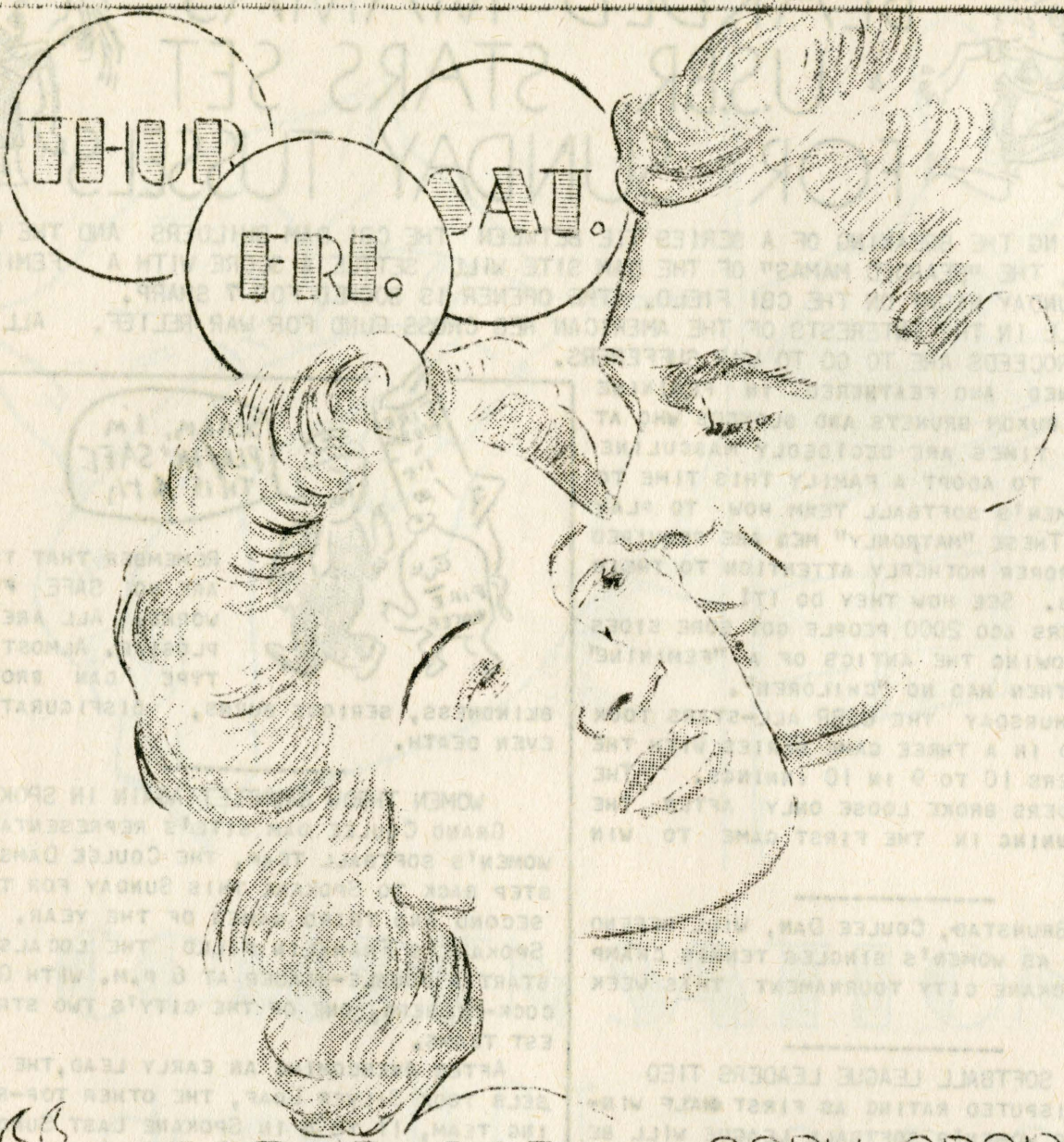
### ED MITCHELSON TAKES A STATE GOLF TITLE

STATE SAND-GREEN GOLF CHAMP OF THE SENIOR DIVISION IS ED MITCHELSON, CBI CARPENTER SUPERINTENDENT, WHO LED THE WAY IN THE STATE PLAY-OFF AT LEAVENWORTH WITH A SCORE OF 151 FOR 36 HOLES. HE BROUGHT BACK A GOLD CUP.

THE COULEE CITY JUNIORS UPSET THE COULEE DAM JUNIORS 8 TO 6 IN A SOFTBALL GAME HERE THIS WEEK.

LOVE MAY BE BLIND, BUT IT SURE CAN FIND ITS WAY AROUND IN THE DARK.

THE BEST AID TO BEING SAFE IS LOCATED AN INCH OR TWO ABOVE THE EYEBROWS.



IRENE DUNNE *in* CARY GRANT'S  
**MY FAVORITE WIFE**

MASON CITY THEATRE